

Subheader

- For ADA Compliance, the font size should be set to 24pt or higher with few exceptions of 20-24pt in order to fit content on a single slide.
- Each slide should have a unique title. If the title/topic is the same then you can do the following, add 1/2 or 1 of 2 to the title to make it unique.
- All images needs to have Alt Text, a brief description of the image. General shapes should be “Mark as decorative”.



SACRAMENTO STATE
COLLEGE OF CONTINUING EDUCATION

Orange County Metrolink Access Study

- OCTA 2013 Planning Study Evaluated 11 Fixed-Rail Transit Stations for Bike/Ped Access
- Identified Solutions for Local Implementation



SACRAMENTO STATE
COLLEGE OF CONTINUING EDUCATION

Metrolink Access Study Outcomes

- Access Improvements Implemented at Multiple Train Stations
- Established Baseline to Evaluate Improved Active Transportation Access Over Time



Bus Stop Access Study





- Future Planning Study
- Caltrans Sustainable Transportation Planning Grant Funded
- Evaluate Bicycle & Pedestrian Access



20 ACTIVE TRANSPORTATION
21 SYMPOSIUM CONNECT. VISUALIZE. TRANSFORM.

Bus Stop Access Study Outcomes

- Study to Evaluate 41 Highest Ridership Bus Stops
- OCTA: Identify Feasible Solutions
- Local Agencies: Lead Local Implementation

20 ACTIVE TRANSPORTATION
21 SYMPOSIUM CONNECT. VISUALIZE. TRANSFORM.

San Bernardino Transit Access Study

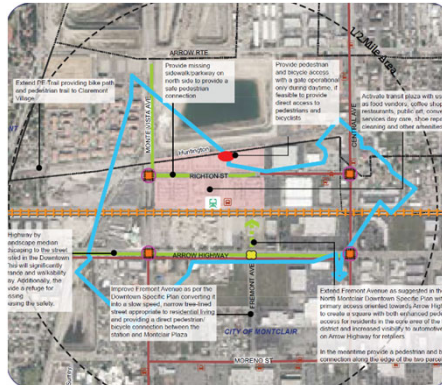
- SBCTA Comprehensive Community-Based Planning Study to Position for Capital Implementation Grants
- Regional Study Evaluated 6 Fixed Rail Train Stations & 4 BRT Stations






Active Transportation Improvements

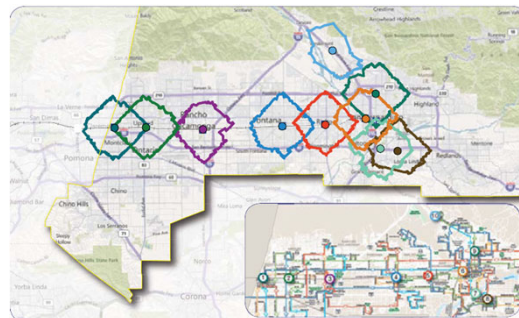
- 70 miles of bikeways
- 50 new/improved crosswalks
- 23 miles of new ADA-compliant sidewalks
- 2,300 new pedestrian-scale lighting elements
- 1,700 new trees for shade



SACRAMENTO STATE COLLEGE OF CONTINUING EDUCATION

Planning Analysis Success

- Analysis Solutions Yields Implementation Funding
 - Cycle 1: \$5M ATP Grant Award
 - Cycle 4: \$7M ATP Grant Award
- San Bernardino Study Receives APA National Planning Award



SACRAMENTO STATE COLLEGE OF CONTINUING EDUCATION

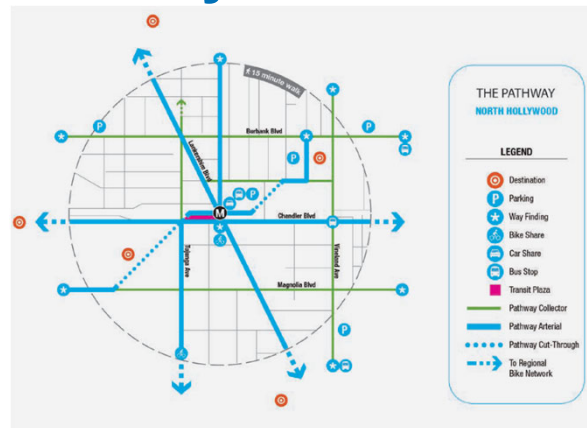
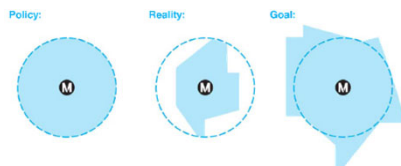
Los Angeles Metro First/Last Mile Plan

- First/Last Mile Strategic Plan and Design Guidelines
- Established Process to Evaluate Active Transportation Access to Fixed Rail & BRT Stations



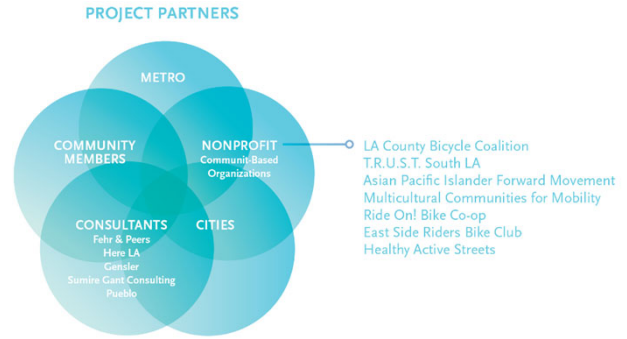
Metro Defines “The Pathway”

- Created Idea of “The Pathway” for
 - Seamless Connections and
 - Increased Transit Access Shed



Metro First/Last Mile Guidelines

- Defines Roles by Metro & Local Agencies
- Established 2-step Process:
 - Prepare Station Specific Plans
 - Pursue Funding
- Align Polices With:
 - Transit Oriented Communities
 - CBO Partnerships



SACRAMENTO STATE
 COLLEGE OF CONTINUING EDUCATION