

A low-angle, close-up photograph of people's legs and feet as they walk and ride a bicycle on a paved path. The person on the left is wearing black leggings and orange and grey sneakers. The person in the middle is wearing a white skirt, blue and pink socks, and pink and black sneakers. The person on the right is wearing black pants and black sneakers with a red logo, riding a blue bicycle. The scene is brightly lit, suggesting a sunny day.

Active Transportation Program
2019 SYMPOSIUM
Inform. Educate. Inspire.

**New Frontiers for Advancing
Equity & Justice in Active
Transportation?**

Slido V598

New Frontiers for Advancing Equity & Justice in Active Transportation

Tony Dang, California Walks



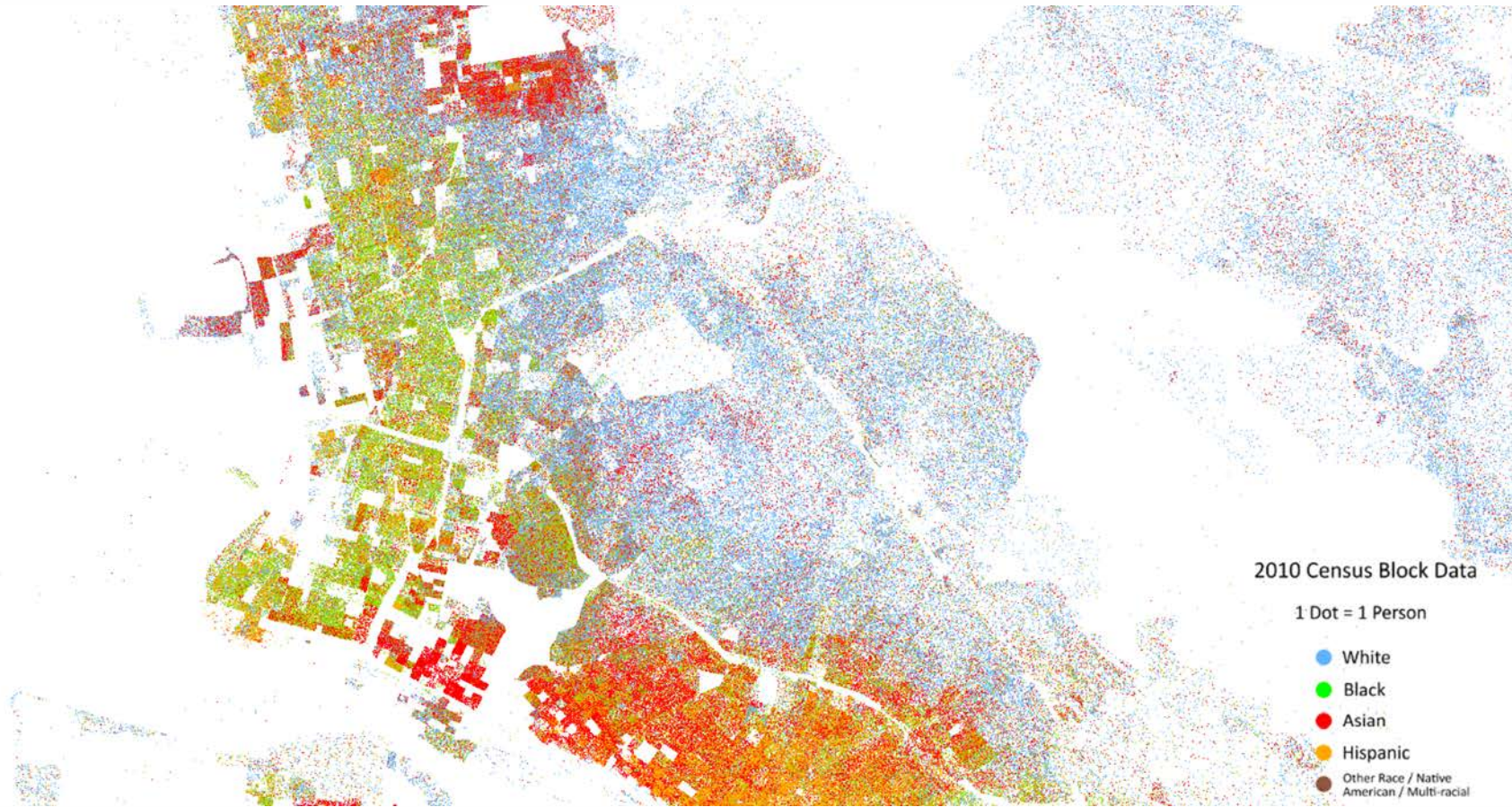
DIVISION OF THE BARRIOS & CHAVEZ RAVINE

Judy Baca's "Great Wall of Los Angeles." Photo by Jon Rou

Active Transportation Symposium 2019

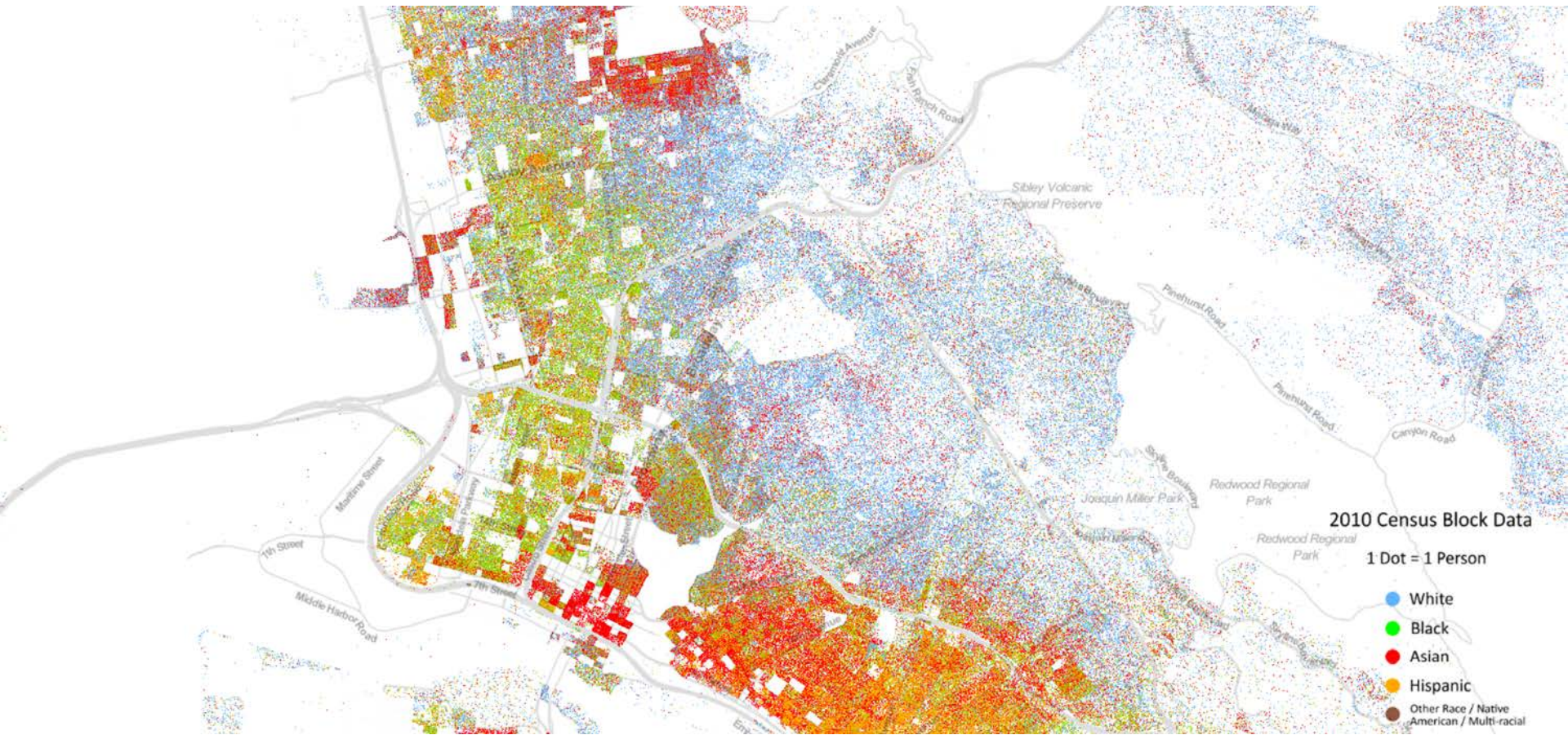
ATRC
Active Transportation
Resource Center





Oakland, CA

Source: Dustin Cable, The Racial Dot Map, July 2013. Available at demographics.coopercenter.org/racial-dot-map/



Oakland, CA

Source: Dustin Cable, The Racial Dot Map, July 2013. Available at demographics.coopercenter.org/racial-dot-map/



Hoopa Valley, CA

Photo Credit: Tony Dang

Active Transportation Symposium 2019





Fresno, CA

Photo Credit: Jaime Fearer, AICP

Active Transportation Symposium 2019





Source: Matt Kinshella, Equity Illustrated, 3rd place: Equity Is About Resources, <https://mmt.org/news/equity-illustrated-3rd-place-equity-about-resources>

A low-angle, close-up photograph of people's legs and feet in motion. On the left, a person in black leggings and blue sneakers walks. In the center, a person in a white skirt and colorful socks walks. On the right, a person in black pants and black sneakers with yellow accents pedals a blue bicycle. The scene is set on a paved sidewalk with a red curb in the foreground. The text is overlaid in the center.

Active Transportation Program 2019 SYMPOSIUM

Inform. Educate. Inspire.

A photograph showing the lower legs and feet of people walking and riding a bicycle on a paved path. The person on the left is wearing black leggings and blue sneakers with orange soles. The person in the middle is wearing a white skirt and colorful sneakers. The person on the right is riding a blue bicycle and wearing black sneakers with orange accents. The background is a bright, sunny outdoor setting with shadows cast on the pavement.

Active Transportation Program
2019 SYMPOSIUM
Inform. Educate. Inspire.

Destiny Thomas, PhD
New Frontiers for Advancing Equity & Justice in
Active Transportation: Anti-Displacement

Anti-displacement in active transportation

Through Liberative Planning

Active Transportation Symposium 2019



Liberative Planning: A ten-point plan

- Focus on FREEDOM
- Strive for FULL employment
- De-centering capital
- Humane Housing
- Confront the past; acknowledge Black and Indigenous contributions
- Repair and atone
- Disrupt and prevent the criminalization of movement
- Accommodate and serve those who've been criminalized by way of harmful policies
- PM Team of community members and peers
- Encourage self-determination

None of this is new...

- BIPOC have been living and carrying values and ideals that not only preserve our homes, but also our lives, the land, and our connections to them.

Gentrification vs Displacement

- Gentrification is a process of cultural/racial exploitation and erasure, motivated by capitalist interests, and leading to a number of impacts—including displacement.

Gentrification

- “Transformative”
- Influx of moderate-high income residents
- Shift in amenities and consumption

(some) Impacts

- Blight
- Perceived imminent displacement
- Social/spiritual/cultural death
- Hyper enforcement, vigilantism, and surveillance
- Erasure at the margins: trans ppl, ppl w/disabilities, youth, elders, Black women
- Kinship Disconnections
- Legacy disruption
- Revisionist history
- DISPLACEMENT

(some) Active Transportation Impacts

- Blight caused by inequitable maintenance plans, poor construction planning, low-quality temporary elements, and the new development waiting game
- Perceived imminent displacement caused by systemic disinvestments, a culture of inequity, overnight bike lane, white people jogging at night, failure to engage/plan through a participatory/deliberative process. Pre-emptive displacement.
- Social/spiritual/cultural death by way of euro-centric planning for the “ideal citizen”

(some) Active Transportation Impacts

- Hyper enforcement, vigilantism, and surveillance attached to infrastructure investment projects and new residents disinterested in honoring the existing “ways of being”; Also, User-pay finance by way of fines
- Erasure at the margins: trans ppl, ppl w/disabilities, youth, elders, Black women exacerbated by planners/engineers
- Kinship Disconnections by way of design concepts that erode the value of people connections and centers of joy
- Legacy disruption and worsening barriers to generational wealth

(some) Active Transportation Impacts

- Revisionist history as “displacement” it called “migration” and “gentrification” is called “economic development”
- DISPLACEMENT is literally the consequence of racist and capital-centric planning practices and policies

Anti-Displacement Action Plan

- Liberative planning (like People for Mobility Justice, Dignity-Infused Planning, etc.)
- Policy interventions (especially when exploring linked transit-housing models)
- Representative practitioners
- Accountable leadership
- Alternative enforcement models

A low-angle, close-up photograph of people's legs and feet in motion. On the left, a person in black leggings and blue sneakers walks. In the center, a person in a white skirt and colorful socks walks. On the right, a person in black pants and black sneakers with yellow accents pedals a blue bicycle. The scene is set on a paved sidewalk with a red-painted curb in the foreground. The background is bright and slightly blurred, suggesting an outdoor, sunny environment.

Active Transportation Program 2019 SYMPOSIUM

Inform. Educate. Inspire.



Río Oxas | Building Power Director | Rio@mobilityjustice.org

As Black Indigenous People of Color we seed critical consciousness about Mobility Justice in all communities.

We envision a world where people have the freedom and resources to move in public spaces with love & dignity!





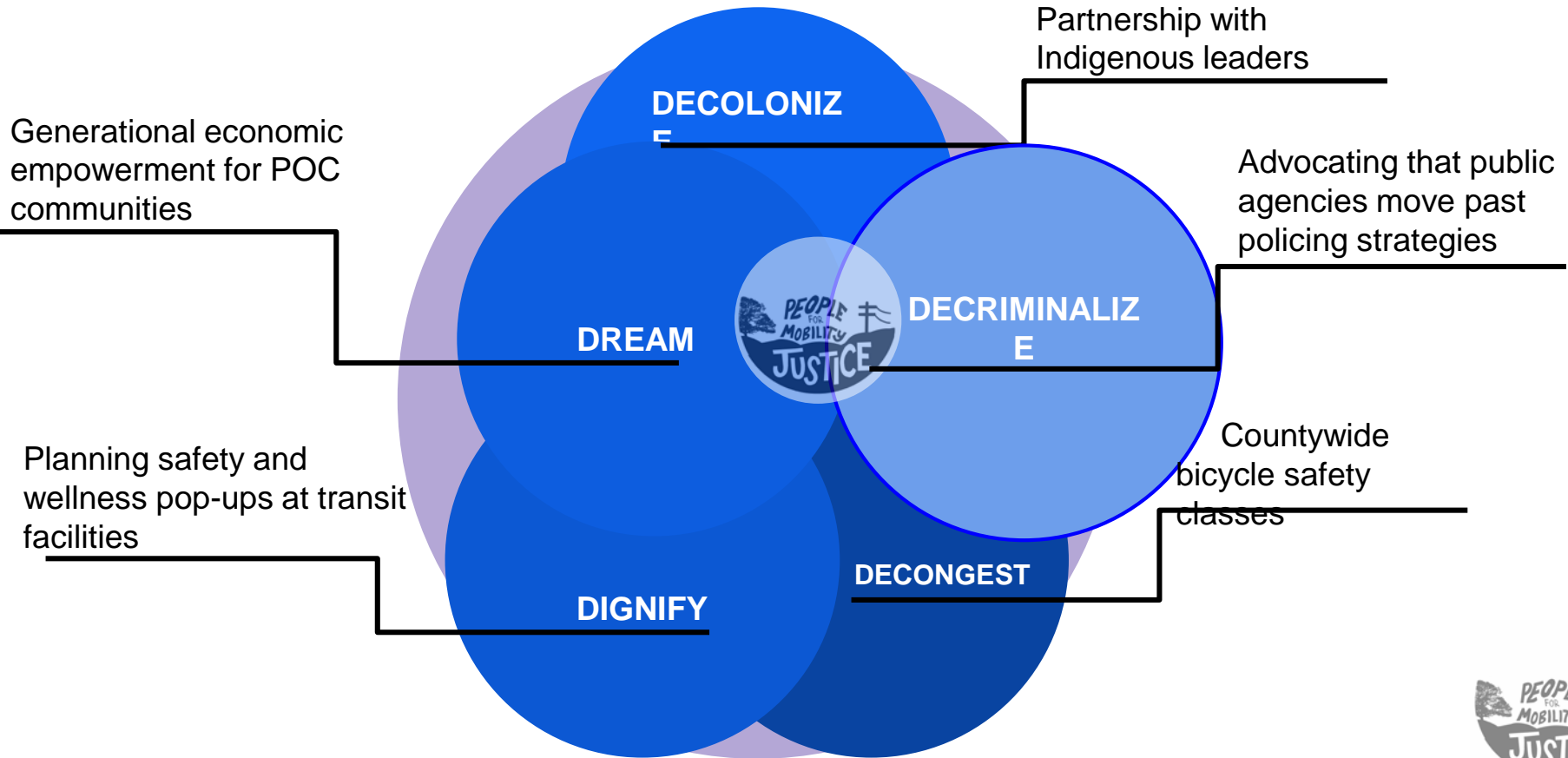
Authentic Community Engagement

1. Equitable Payment
2. Healing Integration
3. Respect for all
4. Trust Building
5. Power





Mobility Justice





A PROJECT OF COMMUNITY PARTNERS



PEOPLEFORMOBILITYJUSTICE.ORG



PEOPLE@MOBILITYJUSTICE.ORG



PEOPLE FOR MOBILITY JUSTICE



@PEOPLEFORMOBILITYJUSTICE



@PEOPLEFORMJ

jesi@mobilityjustice.org

A low-angle photograph of people's legs and feet as they walk and ride a bicycle on a paved path. The person on the left is wearing black leggings and blue sneakers with orange soles. The person in the middle is wearing a white skirt and colorful sneakers. The person on the right is riding a blue bicycle and wearing black sneakers with yellow accents. The scene is brightly lit, casting shadows on the pavement.

Active Transportation Program 2019 SYMPOSIUM

Inform. Educate. Inspire.

A low-angle, close-up photograph of people's legs and feet as they walk and ride a bicycle on a paved surface. The image is bright and sunny, with shadows cast on the ground. The text is overlaid on this image.

Active Transportation Program
2019 SYMPOSIUM

Inform. Educate. Inspire.

Julia Jordan

**Policy Coordinator, Leadership Counsel for Justice &
Accountability**



Active Transportation Symposium 2019

Active Transportation in the San Joaquin & Eastern Coachella Valleys



Community-engaged Project Development



Role of State Agencies

- Ongoing relationships
- Follow through
- Technical assistance models



THANK YOU

Website: LeadershipCounsel.org

Email: jjordan@leadershipcounsel.org