

A low-angle photograph showing the lower legs and feet of three people on a paved surface. On the left, a person in black leggings and blue sneakers is walking. In the center, a person in a white skirt and colorful sneakers is walking. On the right, a person is riding a blue bicycle, with their feet on the pedals and a black shoe with a white sole. The scene is brightly lit, suggesting a sunny day.

Active Transportation Program
2019 SYMPOSIUM
Inform. Educate. Inspire.

**What is
Transformative?**

Slido R793



SOURCE: TODD JOHNSON/KPCC



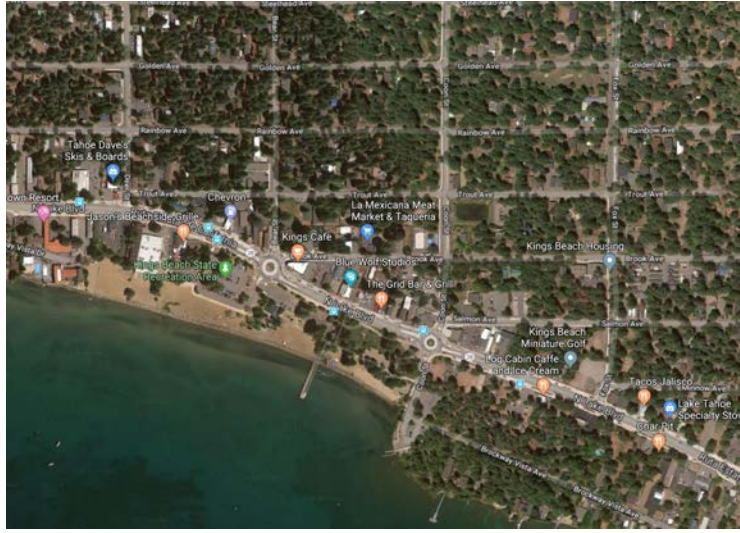
What is Transformative?

Jeanie Ward-Waller
Sustainability Program Manager

SOURCE: CALTRANS



SOURCE: CALTRANS



SOURCE: CALTRANS



SOURCE: CALTRANS



SOURCE: JEANIE WARD-WALLER



SOURCE: CALTRANS



A low-angle, close-up photograph of people's legs and feet in motion. On the left, a person in black leggings and blue sneakers walks on a sidewalk. In the center, a person in a white skirt and colorful socks walks. On the right, a person in black pants and black sneakers with yellow accents pedals a blue bicycle on a paved road. The scene is brightly lit, casting shadows on the ground.

Active Transportation Program
2019 SYMPOSIUM
Inform. Educate. Inspire.

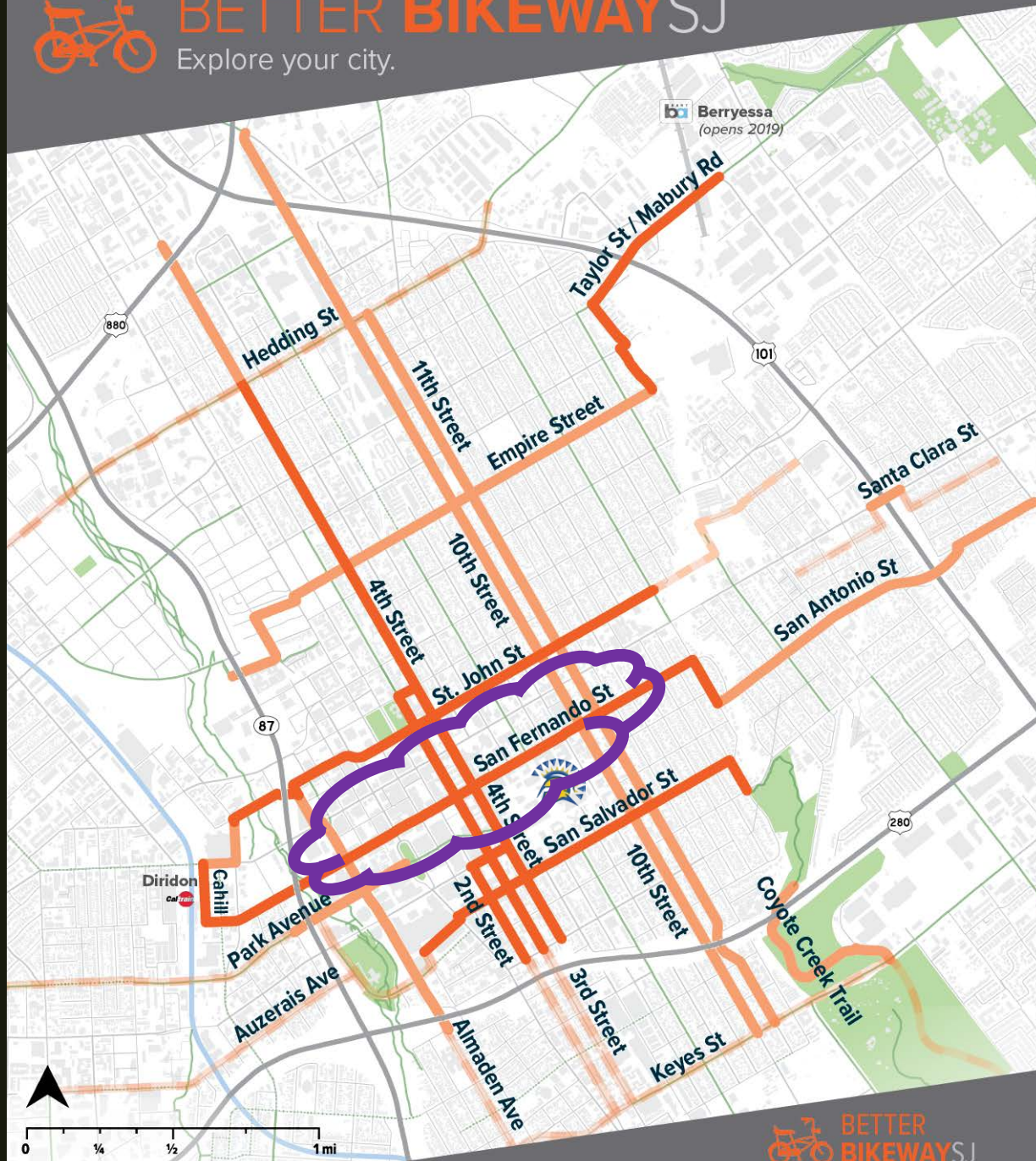
Active Transportation Program
2019 SYMPOSIUM
Inform. Educate. Inspire.

Jessica Zenk
Deputy Director
San José Department of Transportation



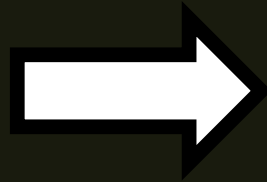
BETTER BIKEWAYSJ

Explore your city.



 Knight Foundation

+



BETTER
BIKEWAYSJ

Explore your city.

K Knight Foundation

CITY OF
SAN JOSE
CAPITAL OF SILICON VALLEY

NACTO

SILICON VALLEY
BICYCLE
COALITION



BETTER
BIKEWAYSJ

Explore your city.



▶▶
THE AWESOME
FOUNDATION

 **SPUR**

GREEN
FIELD
LABS

SJSU SAN JOSÉ STATE
UNIVERSITY

VTA Valley
Transportation
Authority
Solutions that move you


MINETA
TRANSPORTATION INSTITUTE

 California
Transportation
Commission

WHAT IS TRANSFORMATIVE?



BETTER
BIKEWAYSJ

Explore your city.

WHAT IS TRANSFORMATIVE?



BETTER
BIKEWAYSJ

Explore your city.

WHAT IS TRANSFORMATIVE?



BETTER
BIKEWAYSJ

Explore your city.

#1: Growth without Gridlock



	Population	Density (residents per mi. ²)	Area (mi. ²)
San Jose	1,025,000	5,750	176
Portland, OR	619,000	4,640	133
Central San Jose	427,500	8,725	49
Minneapolis, MN	407,000	7,545	54

#1: Growth without Gridlock



Downtown Population

- Today: 19,500
- Est. 2020: 25,000
- Est. 2025: 37,000

Downtown Employment

- Today: 43,000
- Est. 2040: 90,000+

SJSU Expansion

New people = new transportation habits

#2: Transformative Investment

Planned Major Regional Rail Services San Jose Diridon Station

 *HSR*



 *BART*



 *Caltrain*



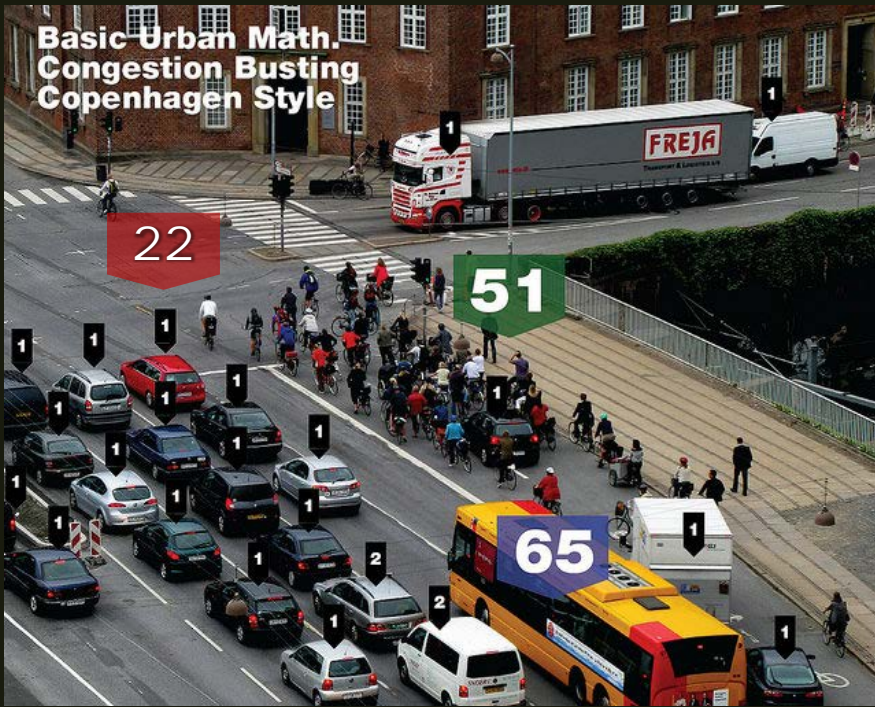
 *ACE*



 *Capitol*



Basic Urban Math. Congestion Busting Copenhagen Style



Downtown Population

- Today: 19,500
- Est. 2020: 25,000
- Est. 2025: 37,000

Downtown Employment

- Today: 43,000
- Est. 2040: 90,000+

New people = new transportation habits



#3: Network Design

- Make the most of trails, get across barriers
- Connect key places (SJSU, BART Station, Train Station, Downtown)
- 10 miles of all-ages-and-abilities bikeways completed in 1.5 years
- Another 7 miles by end of 2020
- Civil Improvements for San Fernando Street by 2022

You're in the network!



sanjoseca.gov/betterbikeways



#4: From Pop-Up to Permanent



DEMONSTRATION

PILOT PROJECT

INTERIM DESIGN

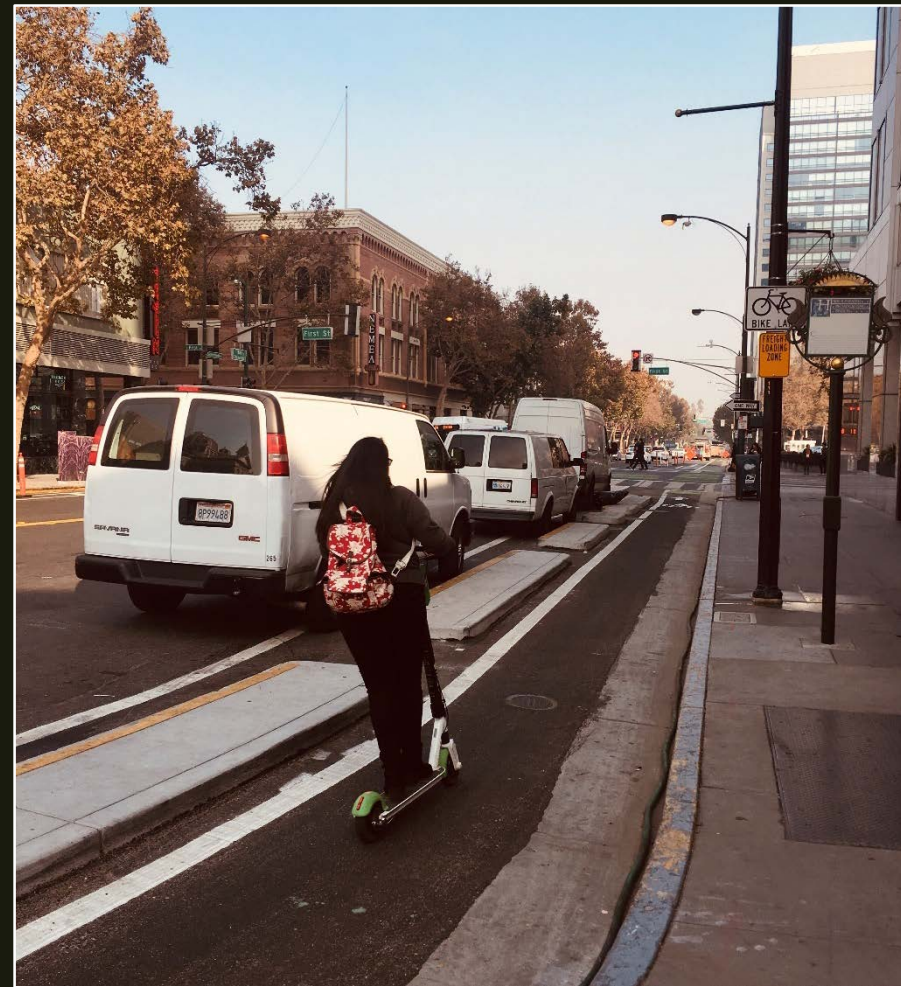
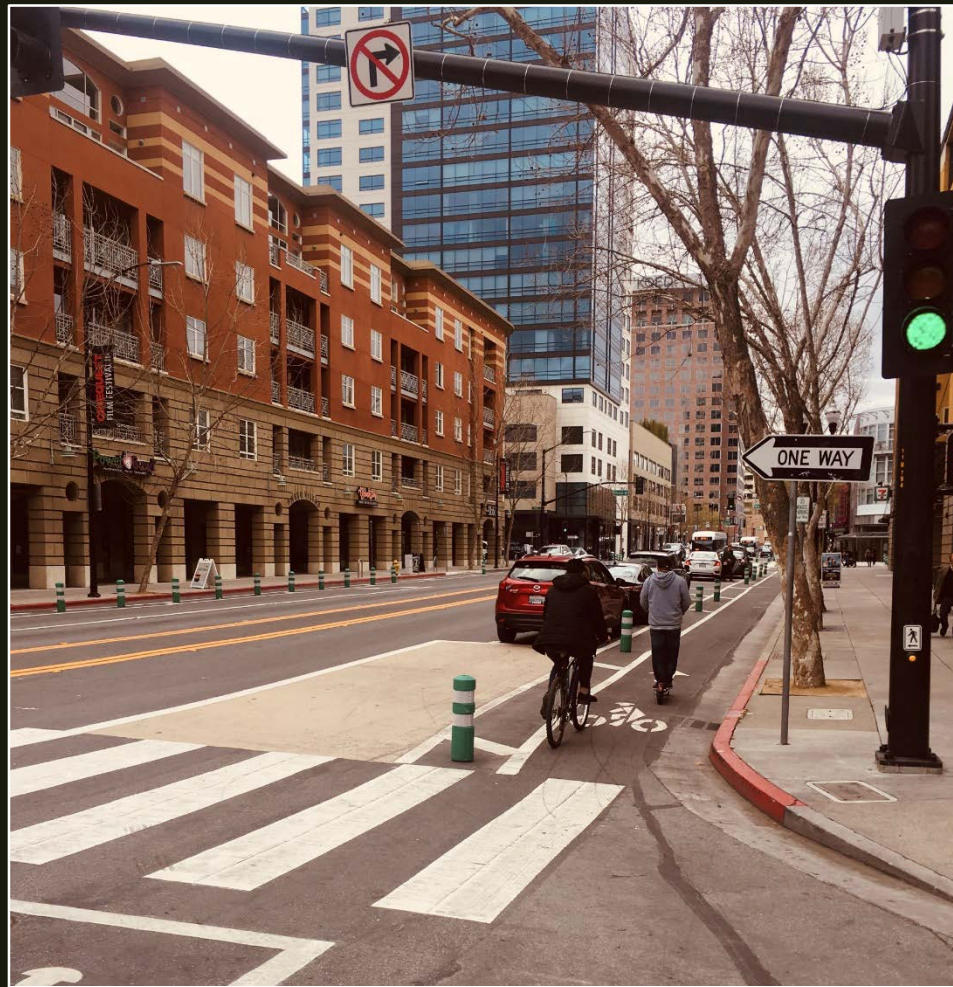
PERMANENT INSTALLATION

2017

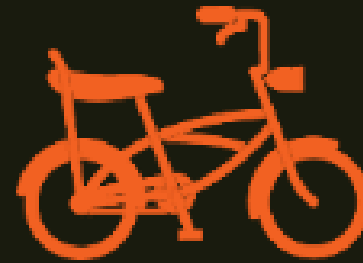
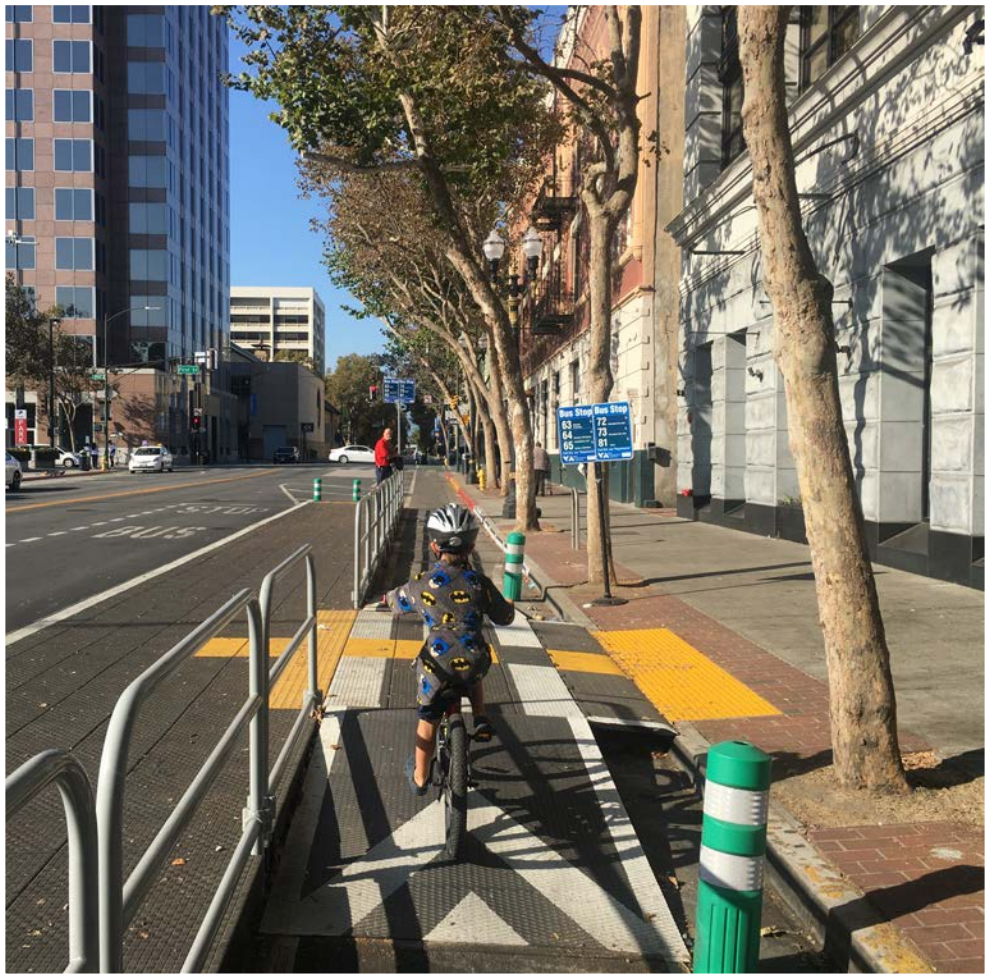
2018-2020+

2021+

#5: Micro-Mobility Lanes



WHAT IS TRANSFORMATIVE?



BETTER
BIKEWAYS SJ

Explore your city.

A low-angle, close-up photograph of people's legs and feet in motion. On the left, a person in black leggings and blue sneakers walks on a sidewalk. In the center, a person in a white skirt and colorful socks walks. On the right, a person in black pants and black sneakers with yellow accents pedals a blue bicycle on a paved road. The scene is brightly lit, casting shadows on the ground.

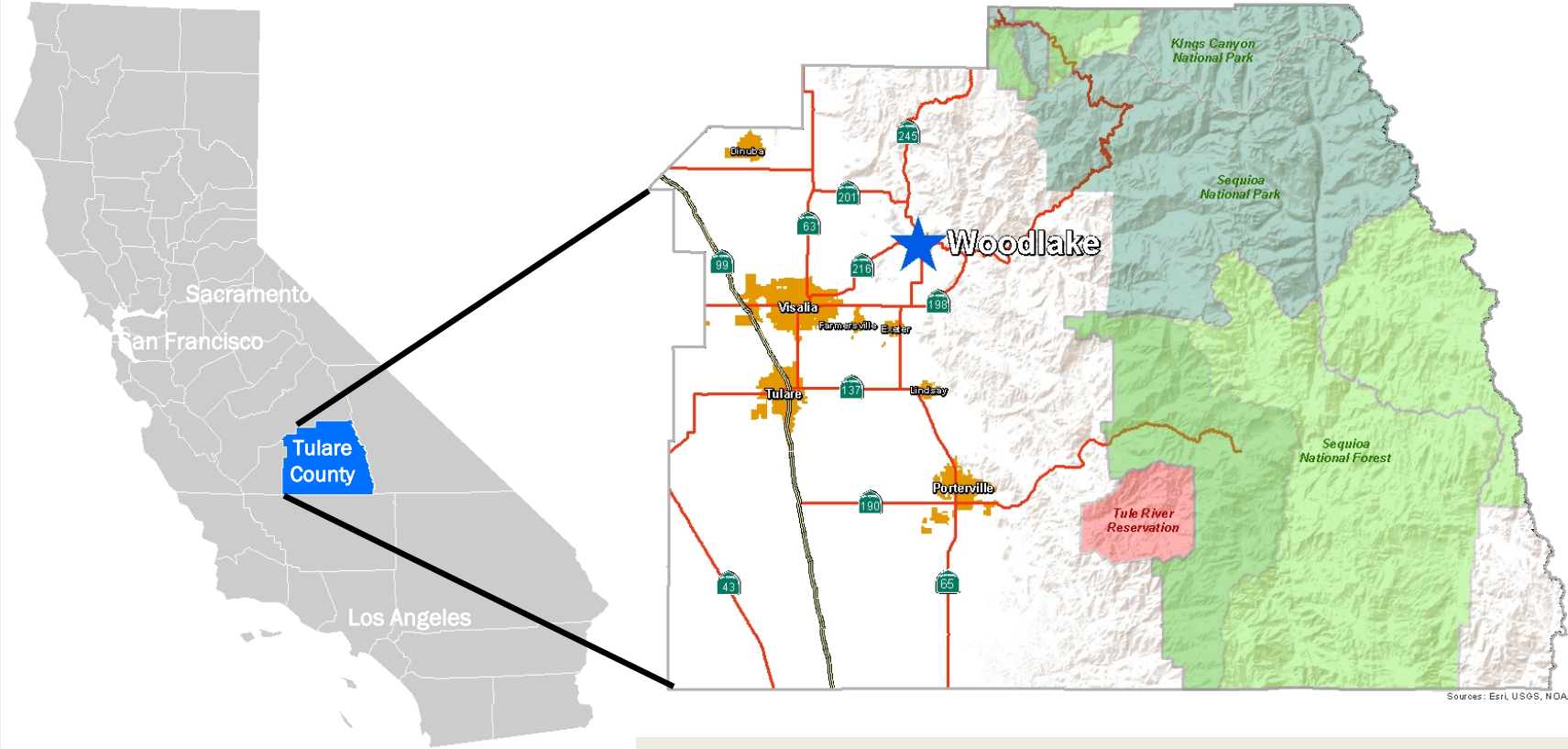
Active Transportation Program
2019 SYMPOSIUM
Inform. Educate. Inspire.

Active Transportation Program
2019 SYMPOSIUM
Inform. Educate. Inspire.

Rudy Mendoza
Mayor, City of Woodlake

"Intrinsic Economic Impacts from Transportation Investments"

Where are we?



About Us



Founded in 1912
Incorporated in 1940



Population:
7,891 (2019 Estimate)



Number of Households:
2,204



Population Growth Rate
Between 2010 and
2019
8.41%



Total Land Area:
2.8 square miles



Median Household
Income:
\$32,375

Benefits of Transformative Investments



Safer and more pleasant downtown shopping and leisure experience



Physical health benefits



Increased transit connectivity for disadvantaged residents



Attraction of new business development in downtown



New employment opportunities created for city residents.



Safer walking and biking commutes for school children

See the Transformation



Woodlake Transit Center

Woodlake Transit Center



Before



After

SR-216 and SR-245 Roundabout

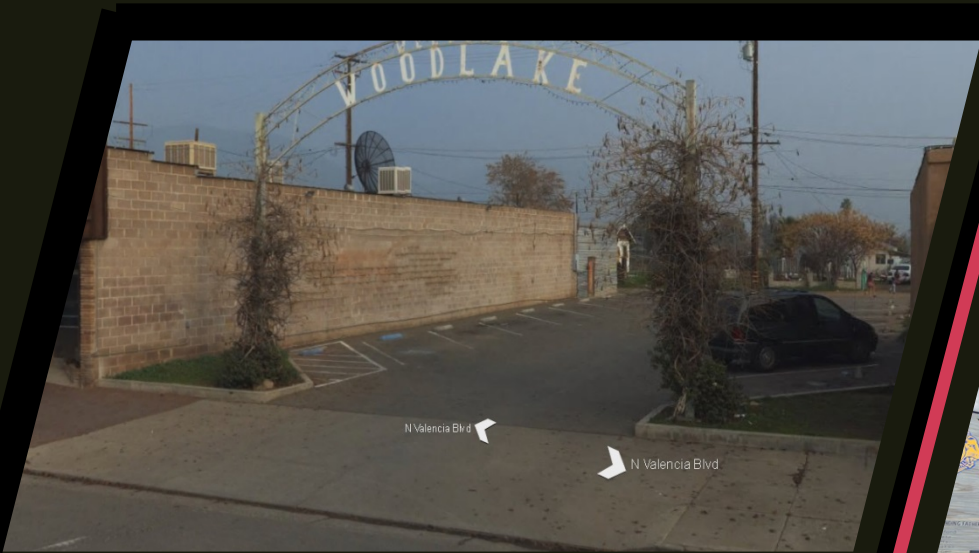


Before



After

Downtown Woodlake



Before



After



Downtown Woodlake



Before



After

North Valencia Avenue ATP Project



Before



After

Woodlake Community Center



Before



After

Woodlake Plaza



Before



After

A low-angle, close-up photograph of people's legs and feet in motion. On the left, a person in black leggings and blue sneakers walks. In the center, a person in a white skirt and colorful socks walks. On the right, a person in black pants and black sneakers with yellow accents pedals a blue bicycle. The scene is set on a paved sidewalk with a red curb in the foreground. The text is overlaid in the center.

Active Transportation Program
2019 SYMPOSIUM
Inform. Educate. Inspire.

Active Transportation Program
2019 SYMPOSIUM

Inform. Educate. Inspire.

Marcella Clem

Executive Director for the Humboldt County
Association of Governments



They make a bike for me

- ✓ 10 Gears
- ✓ Step Through
- ✓ Fat Tires

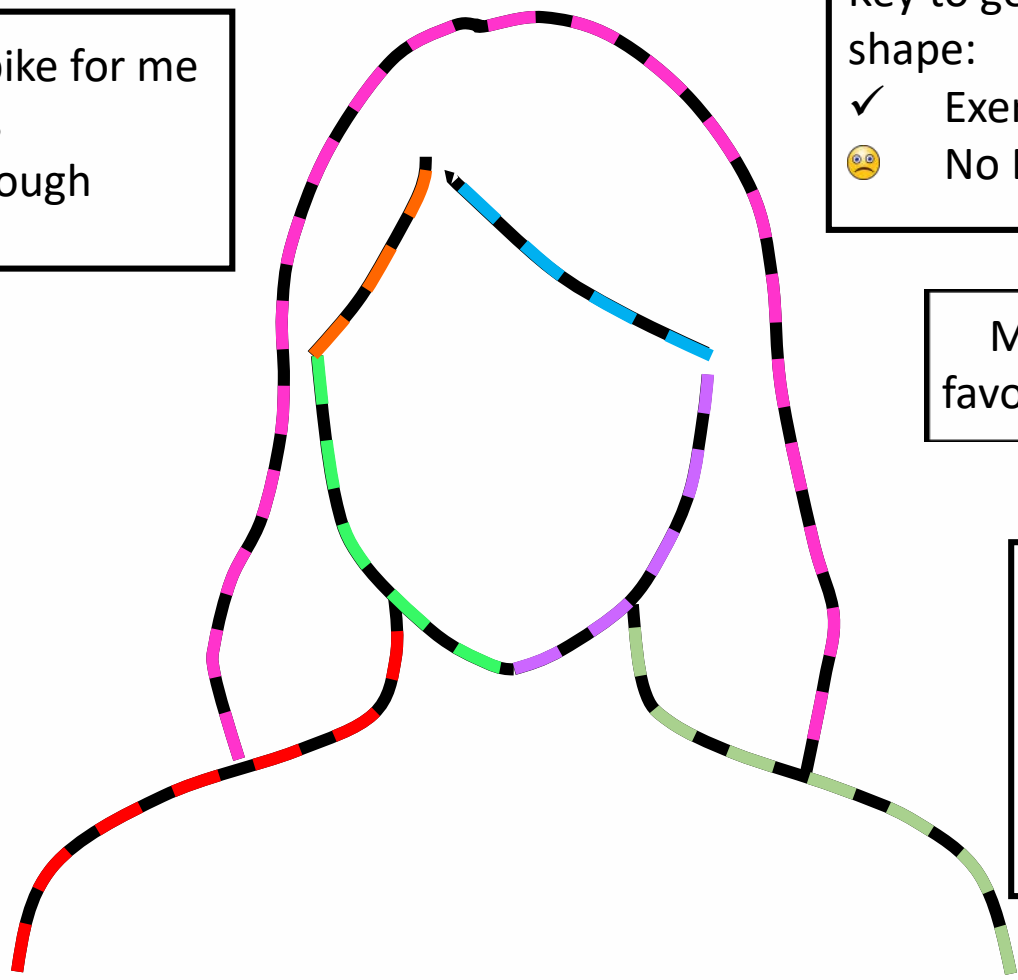
Key to getting in shape:

- ✓ Exercise
- 😞 No Beer

May is my favorite month

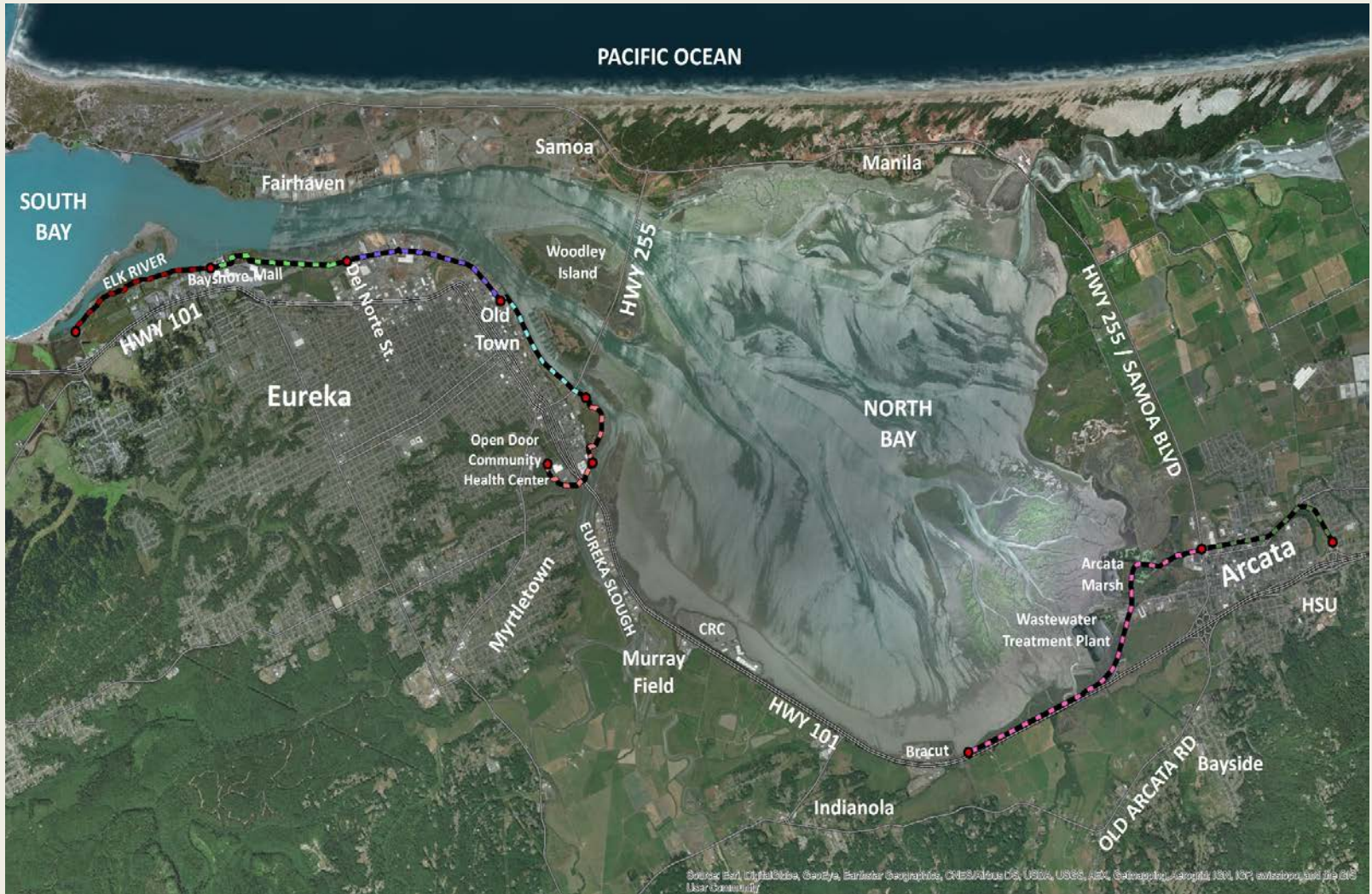
I am many years from being old

The Active Transportation Program funding made it safe to ride



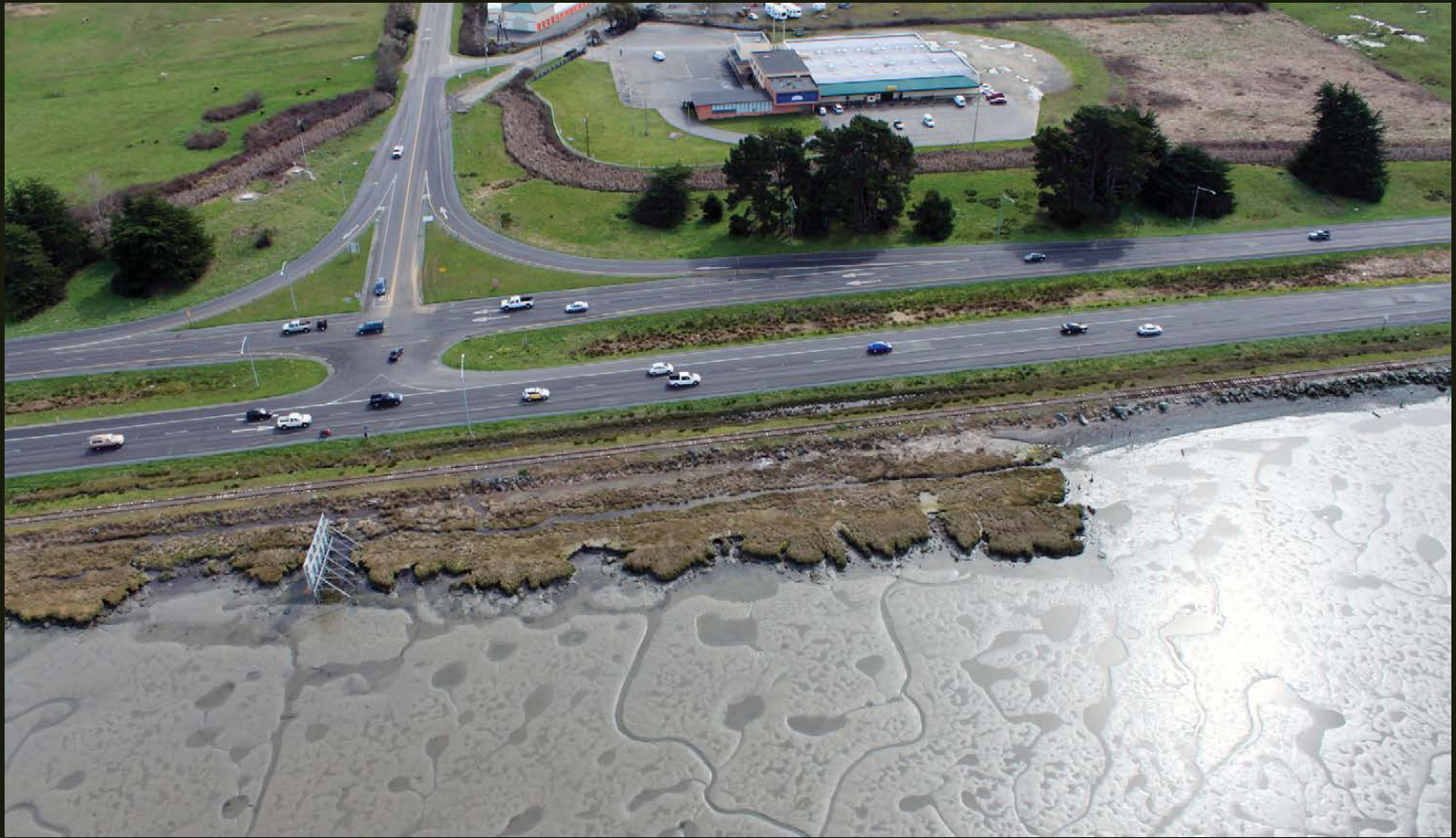


TODAY'S HUMBOLDT BAY TRAIL











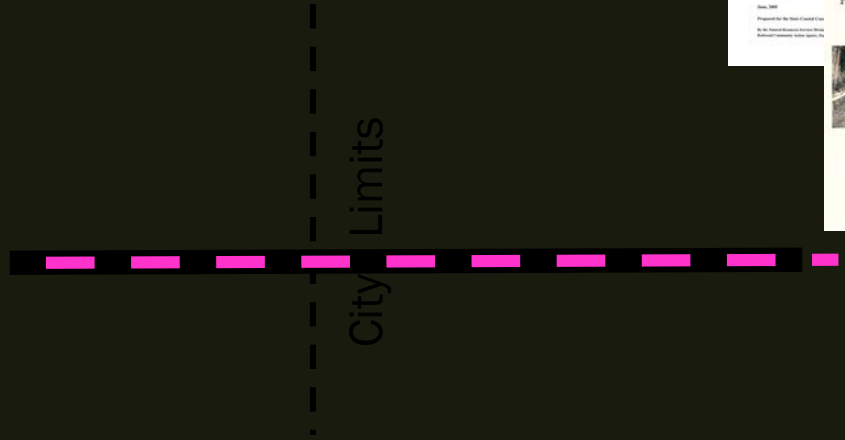
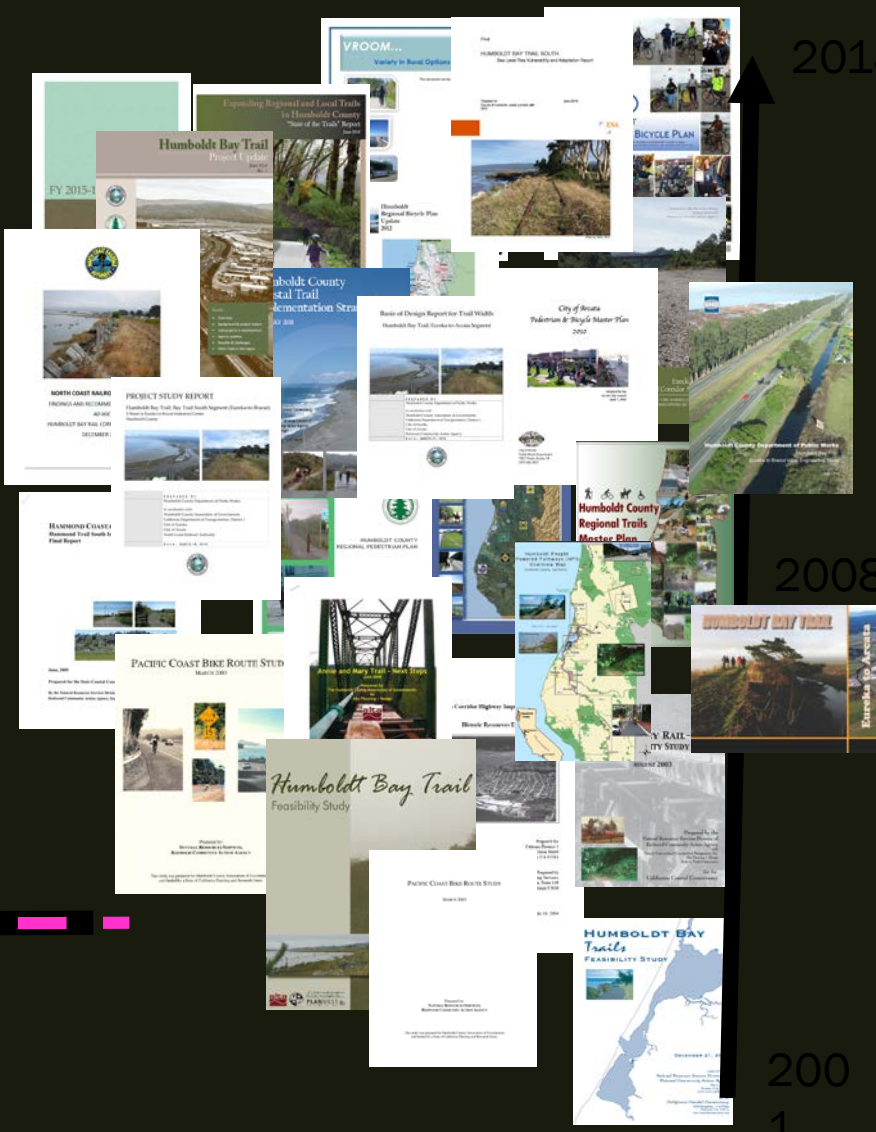
Today, No Way

2022, Absolutely









Cycle	Source	Agency	Title	ATP Funds	Total Cost
1	Statewide	Humboldt County	Redwood Mobility Education Program	\$ 600,000	\$ 600,000
1	Statewide	Humboldt County	Lafayette Elementary School Safe Routes Improvements	\$ 800,000	\$ 800,000
1	Small Urban & Rural	Arcata	Humboldt Bay Trail: Arcata Rail with Trail Project	\$ 3,100,000	\$ 5,366,000
1	Small Urban & Rural	Eureka	Eureka Waterfront Trail	\$ 2,448,000	\$ 4,382,000
1	Small Urban & Rural	Fortuna	SRTS Safety Improvements on Bike/Ped Facilities	\$ 917,000	\$ 917,000
2	Statewide	Hoopa Valley Tribe	SRTS Project	\$ 1,301,000	\$ 1,392,000
2	Statewide	Fortuna	South Fortuna Elementary School SRTS Project	\$ 893,000	\$ 893,000
2	Statewide	Trinidad	Van Wycke Bicycle and Pedestrian Connectivity Project	\$ 714,000	\$ 722,000
2	Statewide	Rio Dell	K-8 Schools SRTS Safety Improvement and Community Outreach Program	\$ 1,533,000	\$ 1,533,000
2	Small Urban & Rural	Arcata	Arcata SRTS Improvements 2015	\$ 526,000	\$ 606,000
2	Small Urban & Rural	Humboldt County	Manila Moves Campaign and Share Use Path	\$ 1,718,000	\$ 1,718,000
3	Statewide	Humboldt County	McKinleyville SRTS Program	\$ 612,000	\$ 612,000
3	Small Urban & Rural	Humboldt County	Fortuna & McKinleyville Active Transportation Education Program	\$ 595,000	\$ 595,000
3	Small Urban & Rural	Blue Lake	Blue Lake Annie & Mary Trail, Phase I	\$ 976,000	\$ 983,000
4	Statewide	Humboldt County	Humboldt Bay Trail South	\$13,296,000	\$22,000,000
			Summary	\$30,029,000	\$43,119,000

A low-angle, close-up photograph of people's legs and feet in motion. On the left, a person in black leggings and blue sneakers walks. In the center, a person in a white skirt and colorful socks walks. On the right, a person in black pants and black sneakers with yellow accents pedals a blue bicycle. The scene is set on a paved sidewalk with a red curb in the foreground. The text is overlaid in the center.

Active Transportation Program
2019 SYMPOSIUM
Inform. Educate. Inspire.

A low-angle, close-up photograph of people's legs and feet on a paved surface. On the left, a person in black leggings and blue sneakers is walking. In the center, a person in a white skirt and colorful socks is walking. On the right, a person is riding a blue bicycle, with their feet on the pedals and a black tire visible. The scene is brightly lit, suggesting a sunny day.

Active Transportation Program
2019 SYMPOSIUM
Inform. Educate. Inspire.

Gracia Elenes
Senior Policy Advocate
Leadership Council for Justice and Accountability