



*Active Transportation
Resource Center*

Active Transportation Resource Center (ATRC) Webinar:

Non-Infrastructure Programs

July 16, 2019





Welcome, ATP awardees!



Today's Speakers

- ***Victoria Custodio***, ATRC Non-Infrastructure (NI) Technical Assistance Team, Active Transportation Safety Program, Safe and Active Communities Branch, Center for Healthy Communities, California Department of Public Health (CDPH)
- ***Emily Abrahams***, ATP ATRC and NI Projects Manager, Office of State Programs, Division of Local Assistance, California Department of Transportation (Caltrans)

Housekeeping

- Teleconference recording will be posted to ATRC website:
<http://caatpresources.org>
- Questions and Answers (Q&A)
 - Questions and comments are encouraged! Enter questions into the **chat** feature any time.
 - We will have a longer Q&A period after the presentation is completed.

Our agenda for today



- ATP NI projects overview
- ATRC NI technical assistance available
- Key ATRC resources and important ATP reminders
- Answer your questions!

Our motivation

- *Help California meet its long-term multi-modal transportation, sustainability, health, safety, and equity goals*
- *Assist you in making your ATP project as successful as possible!*
- *Build your confidence/trust in the ATRC and understanding of ATP project requirements*
- *Inspire you to keep coming back for future NI teleconferences and ATRC webinars!*

Quick Poll of Attendees

Poll #1:

Have you ever attended an ATRC webinar or teleconference?

- Yes
- No

Poll #2:

Has the California Transportation Commission (CTC) allocated your project so you can begin work on your project?

- Yes
- No
- Not sure
- Not applicable

ATP NI Projects Overview: Fast Facts

- **78 NI-only Projects funded over four ATP Cycles**
 - Cycle 1: 40
 - Cycle 2: 7
 - Cycle 3, 3A: 18
 - Cycle 4: 13
- **115 Combination Projects over four ATP Cycles**
 - Cycle 1: 37
 - Cycle 2: 30
 - Cycle 3, 3A: 33
 - Cycle 4: 14
- **~27 NI + Combo Projects completed; ~35 expected to be completed in 2019**

ATP NI + Combination Projects by Caltrans District Number

D1: 17

D2: 2

D3: 27

D4: 22

D5: 12

D6: 12

D7: 29

D8: 30

D9: 0

D10: 9

D11: 18

D12: 15

Total = 193



ATP Plan Projects

- **52 Planning Projects over 4 ATP Cycles**

- Cycle 1: 21

- Cycle 3+3A: 9

- Cycle 2: 14

- Cycle 4: 8

- **18 Planning Projects Completed to Date**

- **List of completed plans available via request**

Form 22-R is your ATP NI Scope of Work in a statewide standardized format

Describes:

- Tasks
- Activities
- Deliverables
- Costs

Exhibit 22-R ATP Non-Infrastructure Project Work Plan			
Fill in the following items:			
Date: (1)			
Implementing Agency Name: (2)			
Project Number: (3)			
Project Location(s): (4a)			
"" (4b)			
"" (4c)			
"" (4d)			
Project Description: (5)			
Enter information in each Task Tab, as it applies (Task A, Task B, Task C, Task C, etc.)			
<i>For Department use only</i>			
You will not be able to fill in the following items. Items will auto-populate once you've entered all "Task" tabs that applies:			
Task Summary:			
Click the links below to navigate to "Task Details" tabs:			
Task	Task Name	ATP Cost	InKind Cost
Task "A"		\$ -	\$ -
Task "B"		\$ -	\$ -
Task "C"		\$ -	\$ -
Task "D"		\$ -	\$ -
Task "E"		\$ -	\$ -
Task "F"		\$ -	\$ -
Task "G"		\$ -	\$ -
Task "H"		\$ -	\$ -
Task "I"		\$ -	\$ -
Task "J"		\$ -	\$ -
		ATP Total:	\$ -
Instructions Exhibit 22-R Task A Task A "OC" Task B Task B "			

NI Project Details/Outcomes Report provides essential summary data to help create statewide ATP profile

Non-Infrastructure Project Details/Outcomes - Final Project Report Addition
For NI Only Projects and the NI Portion of a Combo Project

Date: _____ District: _____ PPNO: _____

Implementing Agency: _____

Project Title: _____

NI Program Type: Check all that apply. If more than one, indicate the percentage split based on cost.

<input type="checkbox"/> Regional Initiative ____%	<input type="checkbox"/> First Last Mile ____%
<input type="checkbox"/> Community Initiative ____%	<input type="checkbox"/> Employer-Based ____%
<input type="checkbox"/> Safe Routes to School ____%	<input type="checkbox"/> Other; _____, ____%

The E's: Which of the following E's did your program include? Check all that apply.

- Education:** Teaches safety skills and raises awareness of the benefits of active transportation
- Encouragement:** Generates excitement and enthusiasm for walking and biking
- Enforcement:** Deters unsafe behaviors, usually by working with local law enforcement
- Engineering:** Recommended improvements (such as conducting walk/bike audits) or actual improvements to the physical environment (for combined NI/) projects
- Evaluation:** Establishing baseline data, setting goals, and tracking outcomes.

Program Activities: Insert the number of each type of activity included in the program. Do not double count.

Regional/Community Initiatives:
(only complete this section if Regional or Community Initiative is checked for NI Program Type)

- ___ # of walk or bike audits
- ___ # of bicycle skills/safety classes (ex. bike rodeos)
- ___ # of pedestrian skills/safety classes (ex. 'mock city')
- ___ # of community demonstration projects/pop-ups/open streets events
- ___ # of community encouragement days (i.e. bike to work days)
- ___ # of community challenges (i.e. bike to work month challenge)
- ___ # of law enforcement methods (i.e. law enforcement present, progressive ticketing, deploying speed trailers, etc.)
- ___ # of community workshops/stakeholder meetings
- ___ estimated # of residents reached through the above activities

Safe Routes to School (SRTS) NI:
(only complete if Safe Routes to School is checked for NI Program Type above)

- ___ # of classrooms/PE classes receiving pedestrian/bicycle safety instruction/education
- ___ # of school assemblies receiving pedestrian/bicycle safety instruction/education
- ___ # of afterschool programs receiving pedestrian/bicycle safety instruction/education
- ___ # of bike rodeos
- ___ # of pedestrian 'mock city' or other pedestrian safety skills events
- ___ # of schools with walking school bus program (defined as a planned route with meeting points, a timetable and a schedule of trained volunteers)

Regional/Community Initiatives:
(only complete this section if Regional or Community Initiative is checked for NI Program Type)

- ___ # of walk or bike audits
- ___ # of bicycle skills/safety classes (ex. bike rodeos)
- ___ # of pedestrian skills/safety classes (ex. 'mock city')
- ___ # of community demonstration projects/pop-ups/open streets events
- ___ # of community encouragement days (i.e. bike to work days)
- ___ # of community challenges (i.e. bike to work month challenge)
- ___ # of law enforcement methods (i.e. law enforcement present, progressive ticketing, deploying speed trailers, etc.)
- ___ # of community workshops/stakeholder meetings
- ___ estimated # of residents reached through the above activities

Safe Routes to School (SRTS) NI:
(only complete if Safe Routes to School is checked for NI Program Type above)

- ___ # of classrooms/PE classes receiving pedestrian/bicycle safety instruction/education
- ___ # of school assemblies receiving pedestrian/bicycle safety instruction/education
- ___ # of afterschool programs receiving pedestrian/bicycle safety instruction/education
- ___ # of bike rodeos
- ___ # of pedestrian 'mock city' or other pedestrian safety skills events
- ___ # of schools with walking school bus program (defined as a planned route with meeting points, a timetable and a schedule of trained volunteers)
- ___ # of schools with bicycle train program (defined as a planned route with meeting points, a timetable and a schedule of trained volunteers)
- ___ # of SRTS encouragement days (i.e. designated monthly bike/walk to school days X number of school months X number of schools involved)
- ___ # of SRTS law enforcement methods (i.e. law enforcement present progressive ticketing, deploying speed trailers, etc.)
- ___ # of training sessions to implement the SRTS program (i.e. training for volunteer walking schools bus leaders, crossing guards, etc.)
- ___ # of crossing guard programs
- ___ # of walk or bike audits
- ___ # of schools as part of the program (should be sum of below breakdown)
 - ___ # of Elementary Schools
 - ___ # of Middle Schools
 - ___ # of High Schools
- ___ estimated # of students and parents reached through the above activities

Other:
(only complete if an activity is not listed in the above Program Types or if you have checked the other NI Program Types above)

- ___ # of _____
- ___ # of _____
- ___ # of _____

Communications: Check the box if the program included the communication type.

- Traditional media (radio ads, TV ads, newspaper ads, flyers, etc.)
- Large media (bus-wraps, billboards, etc.)

ATP NI Projects - Bird's Eye View

IF – Infrastructure
NI – Non Infrastructure
DAC – Disadvantaged Community
SRTS – Safe Routes to School

DAC			
IF	NI	I/NI Combo	Plans

PLAN PROJECT TYPE				
Ped	Bike	ATP	SRTS	First Last Mile

NI PROJECT TYPE					
Regional Initiative	Community Initiative	SRTS		First Last Mile	Employer-Based
		# of Projects	# of Schools		

The 'E's'				
Education	Encouragement	Enforcement	Evaluation	Engineering

STAFF		
Program Coordinator	Consultant / Advisor	Volunteer

COLLABORATIVE PARTNERSHIPS		
Public Health Organizations	Non-Profits	Law Enforcement

REGIONAL/COMMUNITY ACTIVITIES							
Walk/ Bike Audits	Bicycle Skills Classes (e.g. Rodeos)	Pedestrian Skills Classes	Community Demonstration Projects/Pop-Ups/Open Streets	Community Challenges (e.g. Bike to Work Month)	Enforcement	Staff or Volunteer Training	Community Workshops/ Stakeholder Meetings

SRTS NI SPECIFICS				
Classroom/ PE instruction	Assemblies	Afterschool Programs	Walking School Bus/Bicycle Trains	Walk or Bike to School Challenges

COMMUNICATIONS				
Online/TV/ Radio Ads	Billboards / bus-wraps	Flyers	Banners	Maps

EQUIPMENT			
Bicycles	Helmets	Bike/Ped Counters	Reflective Items

SCHOOL TYPE/AGE SERVED			
Elementary	Middle School	High Schools	Adult/Seniors

ATP NI Projects - *At ground-level*



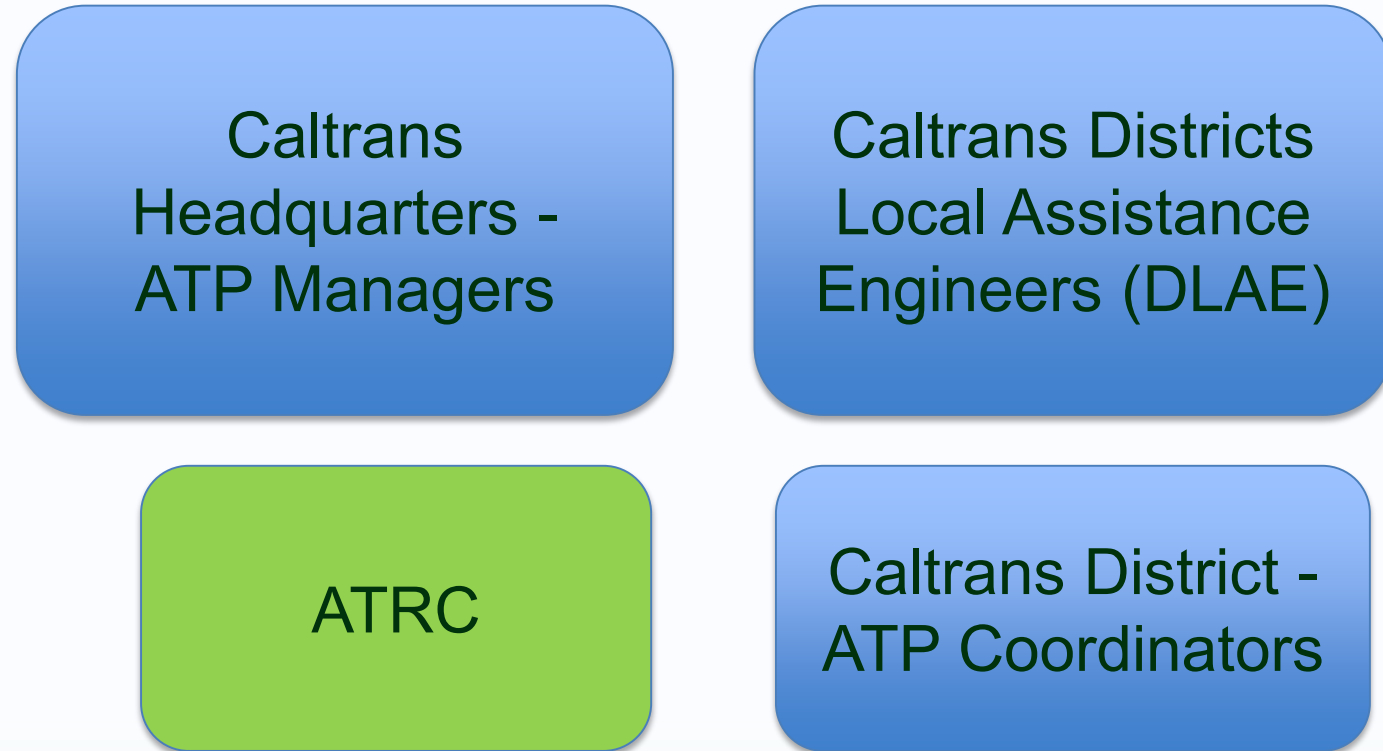
I + NI = Success



Your success is
our goal!



Caltrans ATP: Layers of Support



What is the ATRC?



The graphic features the Caltrans logo in the top left corner. The main title 'ATRC Active Transportation Resource Center' is centered at the top in a blue font, with a bicycle icon integrated into the 'R'. Below the title, a large, light blue bicycle wheel is the background. In the center, a text box contains the mission statement. To the left, silhouettes of a man and a child walking are shown. To the right, a silhouette of a person riding a bicycle is shown. At the bottom, a green curved banner contains the website information.

ATRC
Active Transportation
Resource Center

The ATRC's mission is to provide resources, technical assistance, and training to transportation partners across California to increase opportunity for the success of active transportation projects.

Visit our website and join our mailing list at
<http://caatpresources.org>

- Funded by ATP and administered by Caltrans
- Uses subject matter experts to provide resources, training, and technical assistance
- Sign up for the listserv on the ATRC homepage – <http://caatpresources.org>

The ATRC NI Team

Emily Abrahams

ATP Program Manager, NI Programs and ATRC

Marianne Hernandez

NI Technical Assistance Coordinator - North
Districts 1, 2, 3, 4, (9, 10)

Valerie Shipman - *Temporarily on leave*

NI Technical Assistance Coordinator- Central
Districts 5, 6, 9 and 10

Victoria Custodio

NI Technical Assistance Coordinator – South
Districts (5, 6), 7, 8, 11, 12



Email: atsp@cdph.ca.gov

How ATRC NI Team Assists NI Awardees

■ NI On-call Assistance

- Provide NI and ATP related public health outreach and technical assistance consultations (phone/email/on-site) to ATP NI awardees and interested parties.

■ NI Focused Workshops

- Bring together key stakeholders and present NI basics, highlight emerging issues, discuss strategies to address NI needs, and foster ATP NI networking.

■ NI Pre/Mid/Post Project Check-ins:

- Provide technical assistance and site visits as needed.
- Identify best practices and gather materials.
- Assure success and assist with challenges.

Some examples of NI Technical Assistance



- Program development, implementation, and evaluation consultation
- Partnership references and development
- Resource referrals and case study sharing
- ATRC resource customization
- Brainstorming and trouble-shooting

It never hurts to send us your question!

Who should I reach out to for what NI questions?

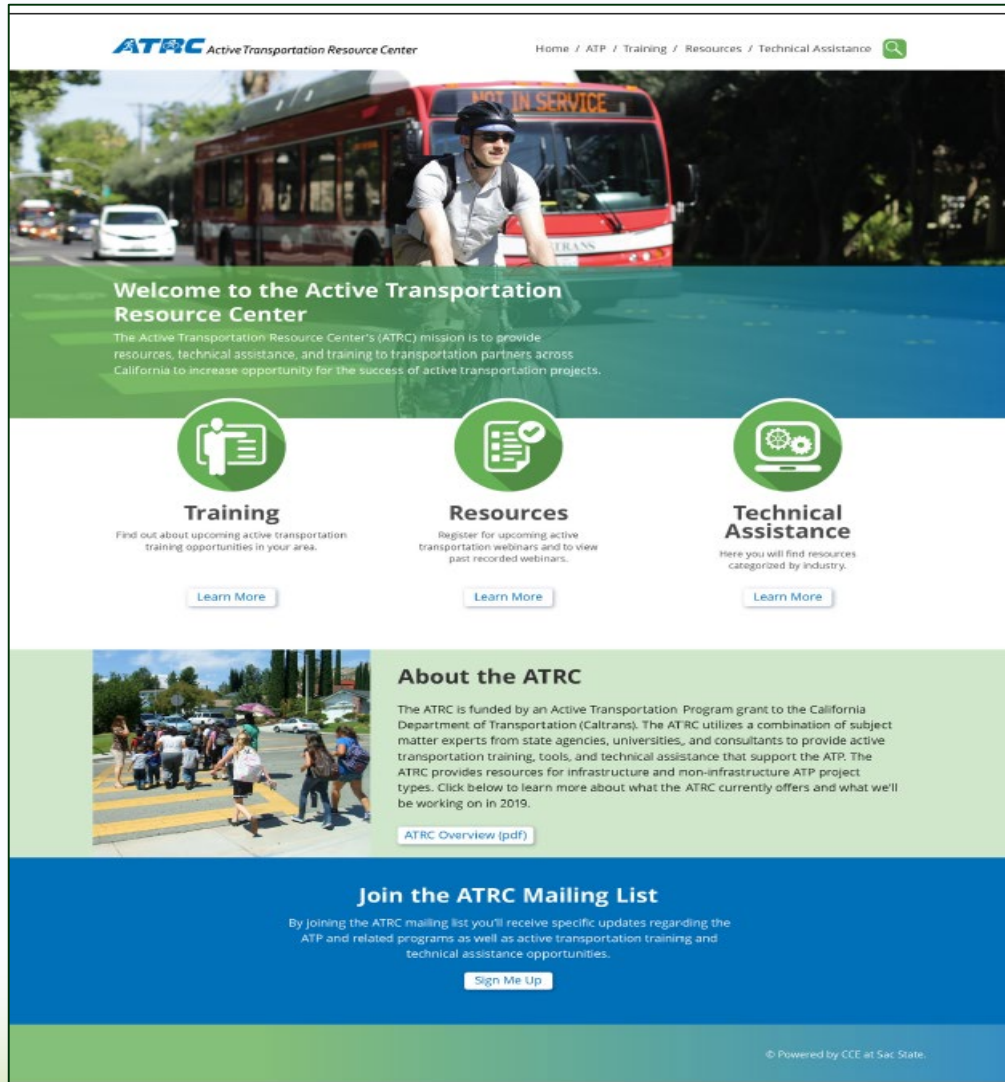
Caltrans (Administrative)

- Scope of work (22-R) approval
- Request for items not listed on NI eligibility list
- Establishing a Master Agreement
- Reporting requirements
- Invoicing

ATRC NI Team (Development)

- Assistance with 22-R development
- Sample 22-Rs, requests for proposals, public interest findings
- Existing curriculum, materials, and other resources already developed
- Webinars, Flash Trainings

We work together to make sure you are being served by the appropriate source of support!



ATRC Website
- Under Revision -
Update Coming Soon!

<http://caatpresources.org>

ATRC NI Trainings Examples

- **Webinars/Teleconferences**- Currently 43 webinars/teleconferences cover active transportation topics and non-infrastructure programming topics such as safe routes to school, vision zero, and public health
- **Flash Trainings** - Five short recorded training modules that will help applicants or awardees navigate various aspects of the ATP process.
- **Presentations and workshops - different topics**

ATRC NI Resource Examples

- **ATP 6 E's Fact Sheets**
 - Education, Encouragement, Enforcement, Evaluation, Engineering, Equity
- **ATP NI Fact Sheets**
 - Open Streets, Demonstration Projects, Media Campaigns
- **Safe Routes to School (SRTS) Toolkits, Guides, Curriculum**
 - Tribal, rural communities; 4th/5th grade bike/pedestrian safety; crossing guard training
- **Customizable Event and Promotional Materials**
- **SRTS Infographic and Case Studies**

<http://caatpresources.org>

Additional ATRC Providers and Services

- **California State University - Sacramento, College of Continuing Education**
 - *Training, Coordination, Communications, Equipment Loans, Support*
- **University of California (UC) - Berkeley, Safe Transportation Research and Education Center (a.k.a. SafeTREC)**
 - *ATP Transportation Injury Mapping System Updates*
- **UC Davis - Institute of Transportation Studies**
 - *ATP Benefit/Cost Tool*
- **Southern California Association of Governments**
 - *Statewide Counts Guidance and Database*
- **Disadvantaged Communities Technical Assistance - TBD**



Active Transportation Resources Center (ATRC)

California Department of Public Health (CDPH)

- Provide NI and ATP related public health outreach and technical assistance to ATP NI awardees and/or interested parties.
- Research, compile, and develop resource materials for NI and SRTS projects.
- Host Active Transportation NI Regional Workshops
- Email address: atsp@cdph.ca.gov

Webinars/Teleconferences/Trainings

Coordinates webinars, teleconferences, flash training, and on-site training sessions to highlight relevant topics and available resources.

UC Berkeley SafeTREC
ATP Transportation Injury Mapping System Update (aka. ATP-TIMS Tool)

- Develop a tool to assist agencies to identify areas with the highest collisions, so safety needs can be addressed in active transportation.
- Will include a feature that captures before/after statistics.

Street Story Tool for ATP

Develop a community engagement tool for an ATP project that allows residents, community groups and agencies collect information about near-misses, general hazards, and safe location to travel.

Sacramento State College of Continuing Education

- Provides coordination for training, communication, and technology transfer
- Facilitate training courses focused on bicycle and pedestrian facility design
- Research, compile, and develop ATP resource materials needed for ped/bike facility design

- Maintains ATRC Website
- Maintains ATRC List Serve
- Conduct Needs Assessment

Focus City Ped/Bike Safety and Design Training

FHWA in partnership with ATRC provides multi-day active transportation training courses to California Focus Cities and to all agencies upon request.

Bicycle Transportation: An Introduction to Planning and Design

This one day course reviews California's commitment to support all modes of transportation and provides an overview of basic bicycle planning and design standards, guidance, and tools (online courses coming soon).

UC Davis
ATP Benefit-Cost Tool

- Develop a researched based easy to use Benefit-Cost Tool for the ATP that can be updated over time, as more research becomes available to make the tool more reliable and consistent.
- This tool would be used as part of the ATP application evaluation process in future ATP cycles.

ATP Project Evaluation

- Develop ATP Project Profiles
- Assist local agencies with Before/After Data Collection and Long Term Impact Analysis

Project Assistance for Disadvantaged Communities

Provide technical assistance to disadvantaged communities for a proposed ATP project. Includes the following:

- ATP Training and Networking Sessions
- ATP Application Support

Pedestrian and Bicycle Automated Counter Loan Program

ATRC will offer short term bicycle and pedestrian automated counters for local agencies to borrow to conduct user counts and gather user data from active transportation projects.

Southern California Association of Governments (SCAG)

Develop consistent statewide counting methodologies and tools

- Statewide Active Transportation Count Guidance
- Statewide Active Transportation Count Database





"Big Picture" Resources and Reminders

ATP Resources

- **ATRC NI Welcome Packet (2019)**

- Key ATP/ATRC Contacts
- How to sign up for ATRC announcements
- CTC 2019 meeting dates (for allocation planning)
- Helpful reminders/items to remember

- **Caltrans ATP Website**

<https://dot.ca.gov/programs/local-assistance/fed-and-state-programs/active-transportation-program>

Suggested Reading: Chapter 22 of the Local Assistance Program Guidelines NI Guidelines

- **ATRC Website**

<http://caatpresources.org>

ATP Reminders

- **Consider deadlines for project allocation**
 - CTC meeting schedule:
<https://catc.ca.gov/meetings-events/commission-meetings>
 - 2019 Preparation schedule for CTC agenda items
<https://dot.ca.gov/programs/transportation-programming/office-of-ctc-liaison-octcl>
- **All scope changes require Caltrans advanced approval**
- **Next Progress Report due July 31, 2019**

ATP Reminders - *Continued*

- **Conduct pre-project before counts within 6 months of first NI activity;** pre- and post-project counts methods must be the same.
 - Interim guidance available in August 2019
- **Take quality photos** (before, during, after) to help document your efforts
- **Your Form 22-R is your scope of work.** Remember to review it often!

Questions?

(please use the [Q&A](#) function)



Your feedback is important!

- Upon the conclusion of this webinar, please complete the **Survey Gizmo** to provide your feedback on today's webinar.
- We will also ask whether you have interest in receiving additional technical assistance.



Thank You!

Emily Abrahams

ATRC Project Manager

Caltrans

emily.abrahams@dot.ca.gov

(916) 653-6920

Victoria Custodio

ATRC / Active Transportation Safety Program

California Department of Public Health

victoria.custodio@cdph.ca.gov

(916) 552-9833

