



# Art in Active Transportation

Tuesday, November 19, 2024, 9:30 a.m. – 11:00 a.m.

# Guest Speakers

---



**Ben Stone**

Director of Design and  
Creative Placemaking

National Endowment for  
the Arts



**Randy Bowman**

Assistant Director of  
Transportation

Coachella Valley  
Association of  
Governments



**Corby Kilmer**

Senior Landscape  
Architect

District 5 Coordinator,  
Caltrans Transportation  
Art



**Jennifer Laine**

Executive Director

San Benito County Arts  
Council

# Webinar Objectives

- Learn why art can enhance biking and walking.
- Learn about the requirements for implementing art installations on your infrastructure projects.
- Learn the value of collaborating with artists and artist organizations.



# ATRC Webinar Logistics

---

- Share your questions throughout the meeting by using the “Q&A” function.
- Please complete the post-webinar attendee survey.
- The webinar will be recorded and shared with all registered participants along with the slides and resources.





11.19.24

**Ben Stone**

Director of Design & Creative Placemaking  
National Endowment for the Arts

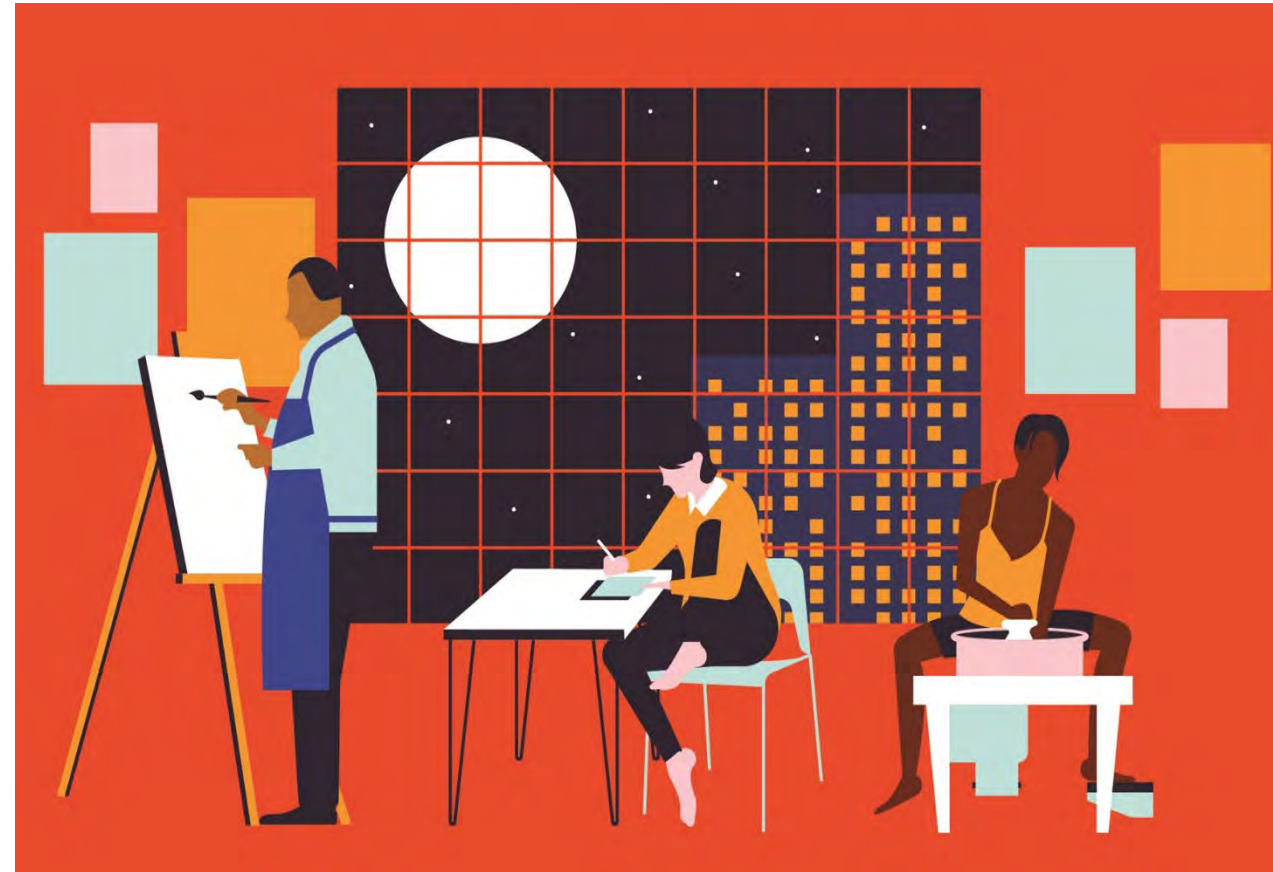
[stoneb@arts.gov](mailto:stoneb@arts.gov)

# National Endowment for the Arts

Independent federal agency created by Congress in 1965; supports the arts in all 50 states, DC, and US jurisdictions.

- Rebuild the creative economy
- Educate the next generation
- Unite and heal the nation through the arts
- Serve the nation's arts field

We are committed to diversity, equity, inclusion, accessibility, and fostering mutual respect for the diverse beliefs and values of all individuals and groups.



# What does the NEA do?

We:

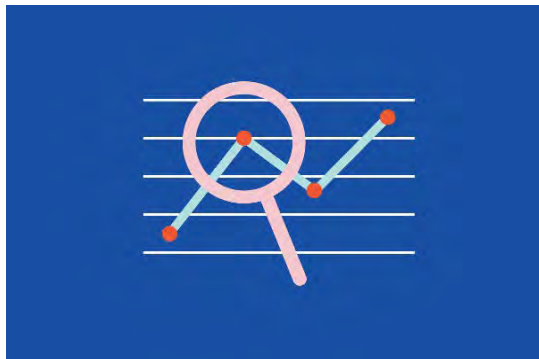
- award grants



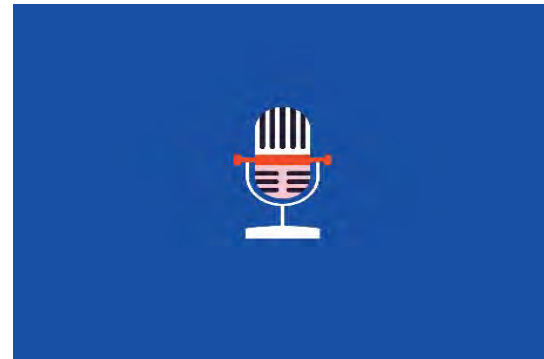
- manage national initiatives



- conduct and fund arts research



- offer free resources on arts and culture

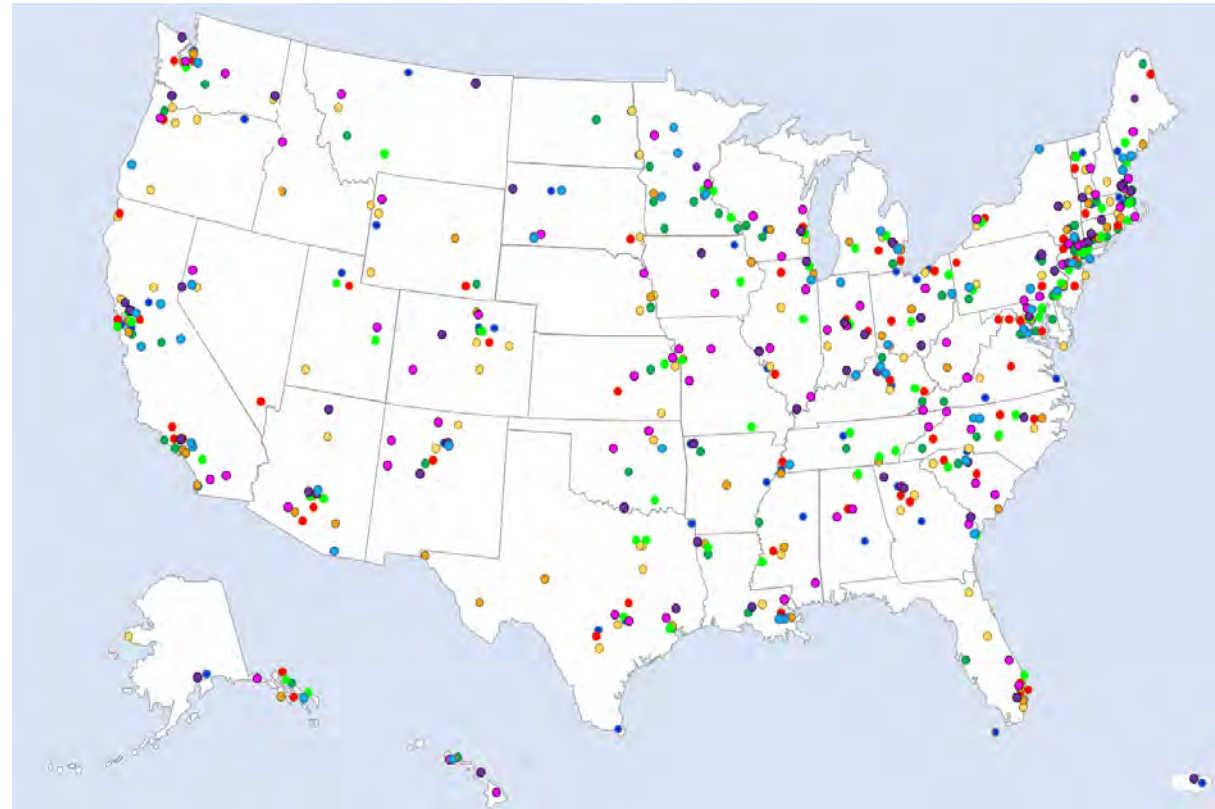


# Our Town: NEA's creative placemaking grant program

\$25,000 to \$150,000 matching grants for one to two year projects

## Body of Work includes:

- 13 rounds of grants
- 800 projects
- \$57.7 million granted
- Variety of partner configurations
- Range of types of projects





# Artists, designers, and culture-bearers can:



Illuminate



Energize



Imagine



Connect



Honor

# BOSTON *air*

A civic partnership between socially-engaged artists and City departments

2022-23 Artists-in-Residence



Ashton Lites



Lily Xie



Ellice Patterson



Jaronzie Harris



Melissa Teng



Heloiza Barbosa

## ***Boston Artists in Residence***

City of Boston & Massachusetts College of Art and Design  
Boston, MA | 2020



NATIONAL  
ENDOWMENT **for the ARTS**

arts.gov

# Disabled artist exposes challenges in redesign of Mattapan Square

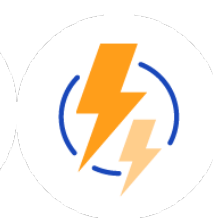
By Seth Daniel, News Editor  
August 17, 2023



*Ellice Patterson in Mattapan Square. (Seth Daniel photo)*

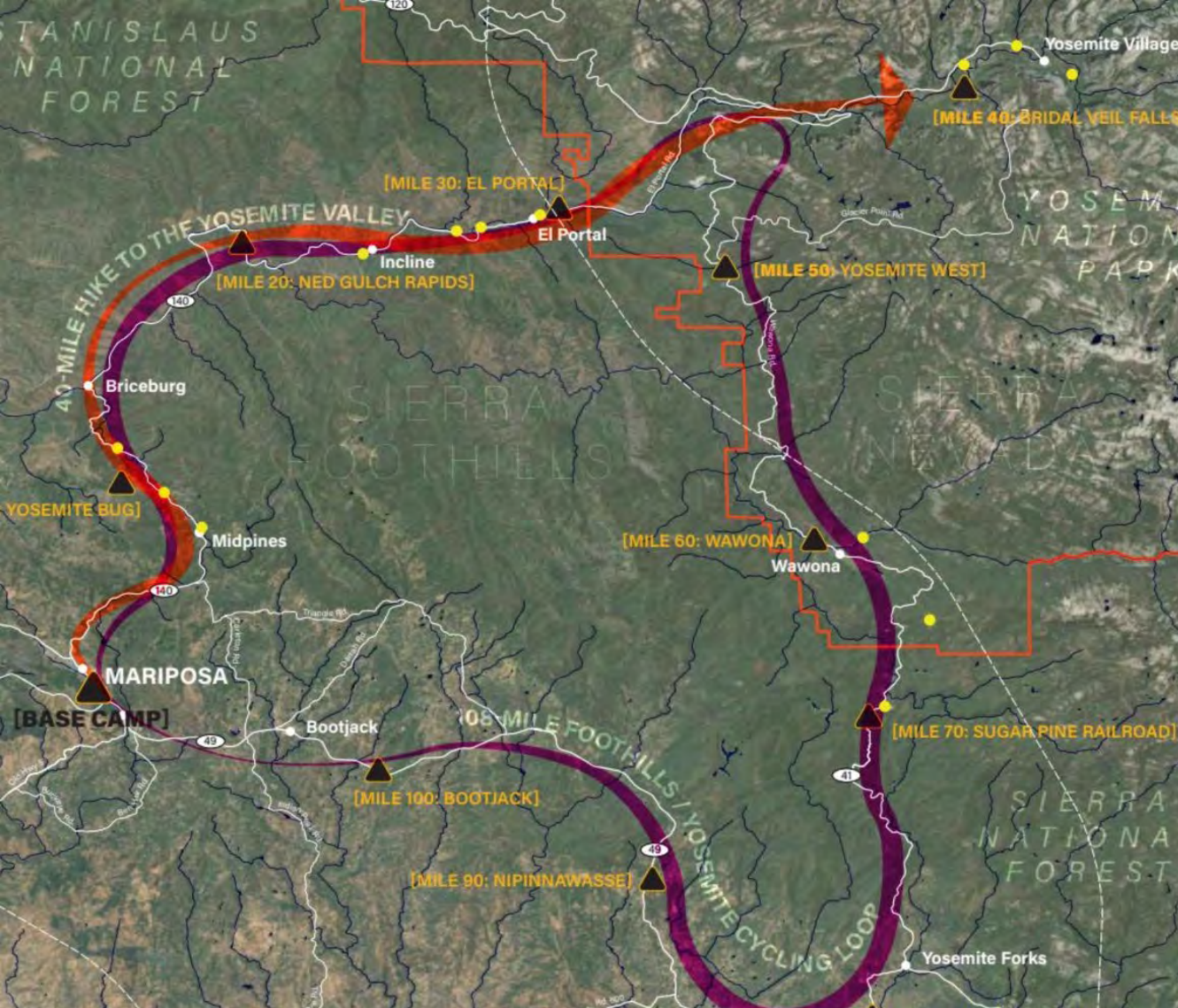
## ***Boston Artists in Residence***

City of Boston & Massachusetts College of Art and Design  
Boston, MA | 2020



NATIONAL  
ENDOWMENT **for the ARTS**

arts.gov



## Mariposa Creek Parkway

Mariposa County Planning Department and Arts Council

Mariposa, CA | 2020



NATIONAL  
ENDOWMENT for the **ARTS**

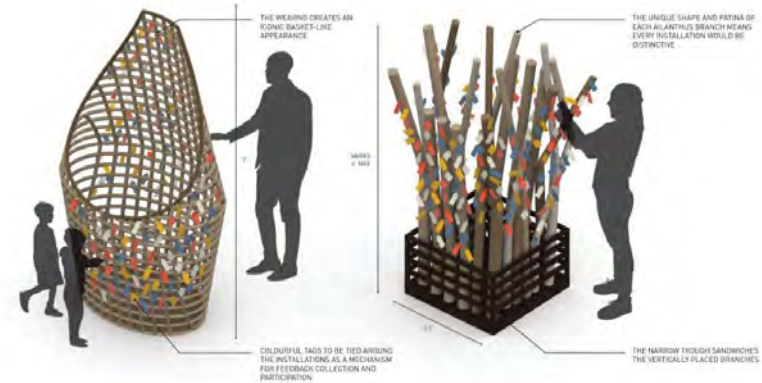
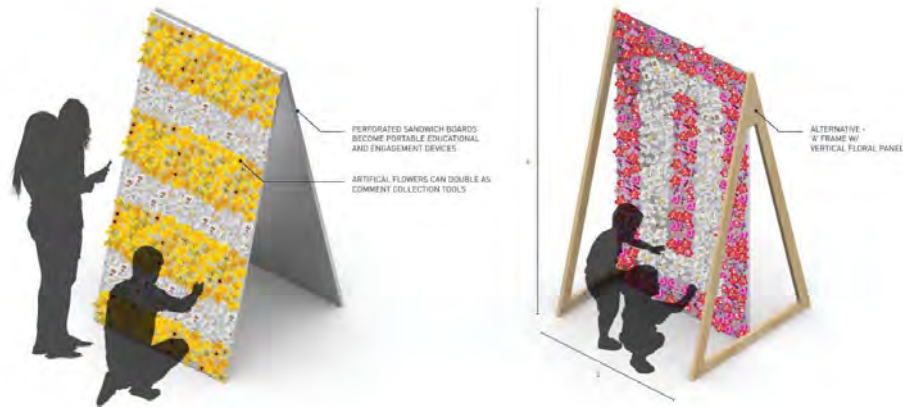
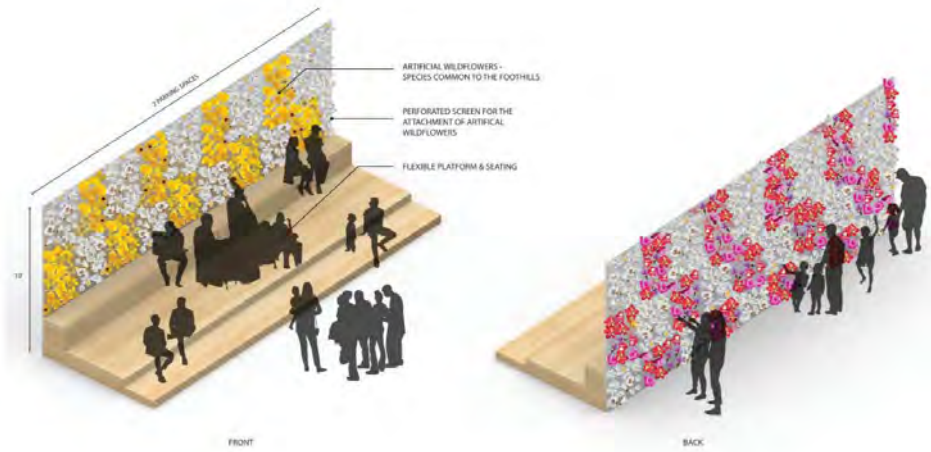


# Mariposa Creek Parkway

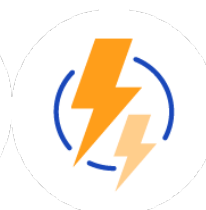
Mariposa County Planning Department and Arts Council  
 Mariposa, CA | 2020



NATIONAL ENDOWMENT for the ARTS



**Mariposa Creek Parkway**  
 Mariposa County Planning Department and Arts Council  
 Mariposa, CA | 2020

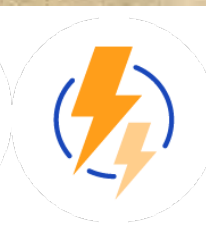


**NATIONAL ENDOWMENT for the ARTS**

arts.gov



**Mariposa Creek Parkway**  
Mariposa County Planning Department and Arts Council  
Mariposa, CA | 2020



**NATIONAL ENDOWMENT for the ARTS**

arts.gov

# Citizens' Institute on Rural Design

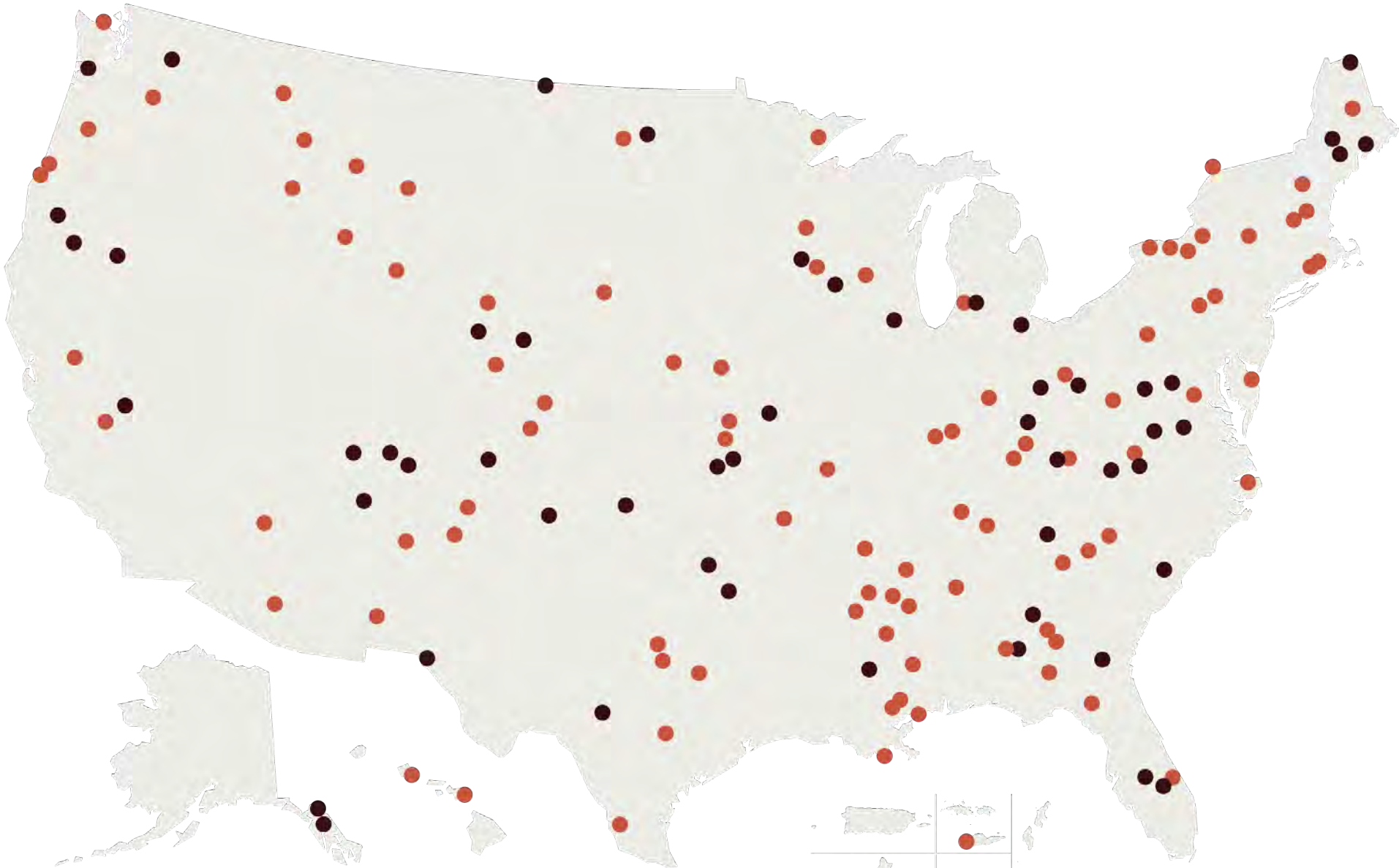
The Citizens' Institute on Rural Design™ is a leadership initiative of the National Endowment for the Arts in partnership with the Housing Assistance Council

Focusing on communities with populations of 50,000 or less, CIRI empowers local citizens to use their unique artistic and cultural resources to guide local development and shape the future design of their communities.

[rural-design.org](http://rural-design.org)

Contact us at [cird@ruralhome.org](mailto:cird@ruralhome.org)





- COHORT COMMUNITIES
- WORKSHOP COMMUNITIES

# Keene, New Hampshire



Historic image of the west side of Main Street, including The Colonial Theater, during the 1930s



Historic image of Cheshire County Courthouse between 1900 and 1920



Historic image of Main Street in Keene, showing Central Square and the Keene Electric Railway



Historic image of Central Square in the 1920s



Historic image of Bank Block, pre 1886









Parking Lot - Before



Parking Lot with Cars - After





# Parking Lot with Market - After





# Smart Growth America

Improving lives by improving communities

**FBCI** Form-Based  
Codes Institute

**LOCUS**  
Responsible Real Estate  
Developers & Investors



National Complete  
Streets Coalition



State  
Smart Transportation  
Initiative



Transportation  
for America



# ARTS, CULTURE AND TRANSPORTATION

A Creative Placemaking Field Scan

Commissioned by ArtPlace America



## Solution #1

# Generating creative solutions for entrenched transportation problems

Arts and culture can help develop better projects that attract greater community support by imagining bold transportation solutions that are unconstrained by traditional processes.



## Solution #7

# Healing wounds and divisions

Arts and culture can help remedy the divisions created by urban highways and other detrimental transportation infrastructure by physically and culturally reconnecting communities.





Arts &  
Transportation  
Rapid Response

---













**Imaginary  
future  
world  
looking**

**No one  
wants to  
fund infra-  
structure**

# PITS & PILES

Keep an eye out for all the piles and pits around the region. WSDOT uses all sorts of materials to keep the roads safe for drivers, from sand and salt to various rock aggregates. Roadkill is moved from highways to salvage pits, an all-you-can-eat buffet for wildlife. More than 8,000 carcasses per year are reported and cleaned up around the state.

*Ever wonder what it takes to keep you moving through all the winter weather?*

And then there's the salt/sand mixture — it's a recipe that the folks at ERA2 are constantly perfecting and trying to make the most cost effective. Ten parts sand + one part salt. Sometimes when the cost of sand goes up, the crew will use other materials in their inventory to recycle used rock and make their own new mixes.



### WSDOT Types of Pits and Piles

#### 6 piles

1/4" 0 FINE HIGHWAY SAND (WINTER SAND)

#### 7 piles

SALT AND SAND MIX - 10/1 MIX RATIO

#### 5 sheds

SALT

#### 0-6 piles

AGGREGATE CRUSHED SCREENING 5/8"

#### 0-1 pile

AGGREGATE CRUSHED SCREENING

"No one notices if everything is going smoothly."



Sand mix at 10 to 1 at a 550 lb per 1000 sq ft rate cost \$6000 \$7.15

1/2" on 1/4" screen  
\$400 cost, 80 tons / 70 in 1000 sq ft / lane mile \$5.00 \$6.40

200 lb / lane mile \$32.00 \$14.00

CO#9 cost \$1.20 / gallon at a rate of 30 gallon / tone mile \$33.00

10 gallon / lane mile \$22.00

20 gallon / lane mile \$11.00

(Sand or 1/2" on 1/4" screen) -> call to ask truck by mile

Sand - \$22.00 / ton

Salt - \$14.00 / ton

road 200 lb on 1/2" on 1/4" screen at 2000 sq ft



Did you know?

## Your maintenance neighbor is certified in almost everything:



Highways Are Built By People

- C.D.L. CLASS A
- PESTICIDE LICENSE
- MINER'S LICENSE
- RAILROAD WORKER'S CERTIFICATION
- FLAGGING CERTIFICATION
- FIRST AID CERTIFICATION
- D.O.T. PHYSICAL CARD
- DEPT. OF ECOLOGY CERTIFICATE
- ENDLESS EQUIPMENT TRAININGS FOR SIGN-OFFS



Based on road study Jan. 20, 2005



"We've been running lean for a long time."

"We're drinking champagne on a beer budget."



Maintenance  
is SEXY

Maintenance  
is SEXY

Maintenance is  
SEXY

Maintenance  
is SEXY

MAINTENANCE IS SEXY

Maintenance  
is SEXY

Maintenance  
is SEXY

MAINTENANCE IS SEXY



## The Scenic Route guide to arts, culture, and transportation

Creative placemaking is an approach that deeply engages the arts, culture, and creativity—especially from underrepresented communities—in planning and designing transportation projects to better reflect and celebrate local culture, heritage, and values. This updated guide from **Smart Growth America** and **Transportation for America** provides a tour of the eight common approaches used in exemplary projects across the country at the potent intersection of arts, culture, and transportation.

# Creative Placemaking:

## Strengthening Communities with Arts at the Core



# Other useful sites:

---

- Citizens Institute on Rural Design: [www.rural-design.org](http://www.rural-design.org)
- Mayors' Institute on City Design: [www.micd.org](http://www.micd.org)
- NEA site: [www.arts.gov](http://www.arts.gov)
- Our Town grants: [www.arts.gov/grants/our-town](http://www.arts.gov/grants/our-town)



Thank you!

Ben Stone  
[stoneb@arts.gov](mailto:stoneb@arts.gov)





# Arts and Music Line

---

ATRC

November 19, 2024

# Engineers And Art



**Field of Corn**  
**Dublin, OH**



**Columbus College  
of Art and Design  
Columbus, OH**



# Bike Stations Columbus, OH



*Photo credit: Google*



**Bike Stations  
Columbus, OH**

Photo credit: [City of Columbus](#)



745199

Michael Finkler  
The Color  
of  
the  
Sun

*Photo credit: City of Palm Desert*

# Traffic Signal Cabinets Palm Desert, CA

**El Paseo Crosswalks  
Palm Desert, CA**





**El Paseo Crosswalks  
Palm Desert, CA**





Photo credit: City of Palm Desert

# El Paseo Crosswalks Palm Desert, CA



San Pablo

ANGEL VIEW RESALE STORE

San Pablo Avenue  
Palm Desert, CA

San Pablo Avenue  
Palm Desert, CA



San Pablo Avenue  
Palm Desert, CA





**San Pablo Avenue  
Palm Desert, CA**

# PROJECT CYCLE

**PROGRAMMING  
&  
SUPPORT**

**VISION**

**Operate  
&  
Maintain**

**Plan**

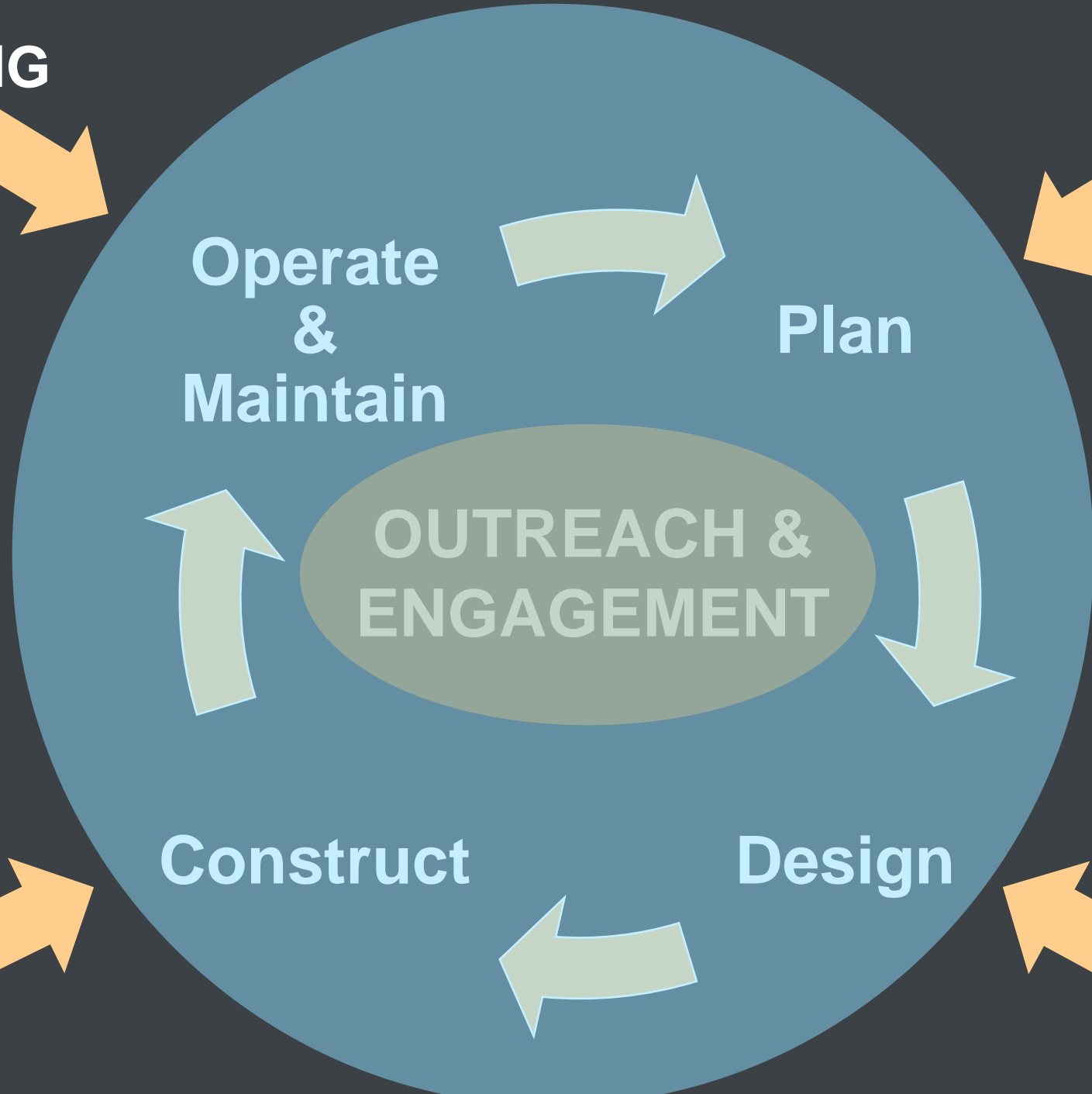
**OUTREACH &  
ENGAGEMENT**

**Construct**

**Design**

**SUPPORT**

**TECHNICAL  
DESIGN**







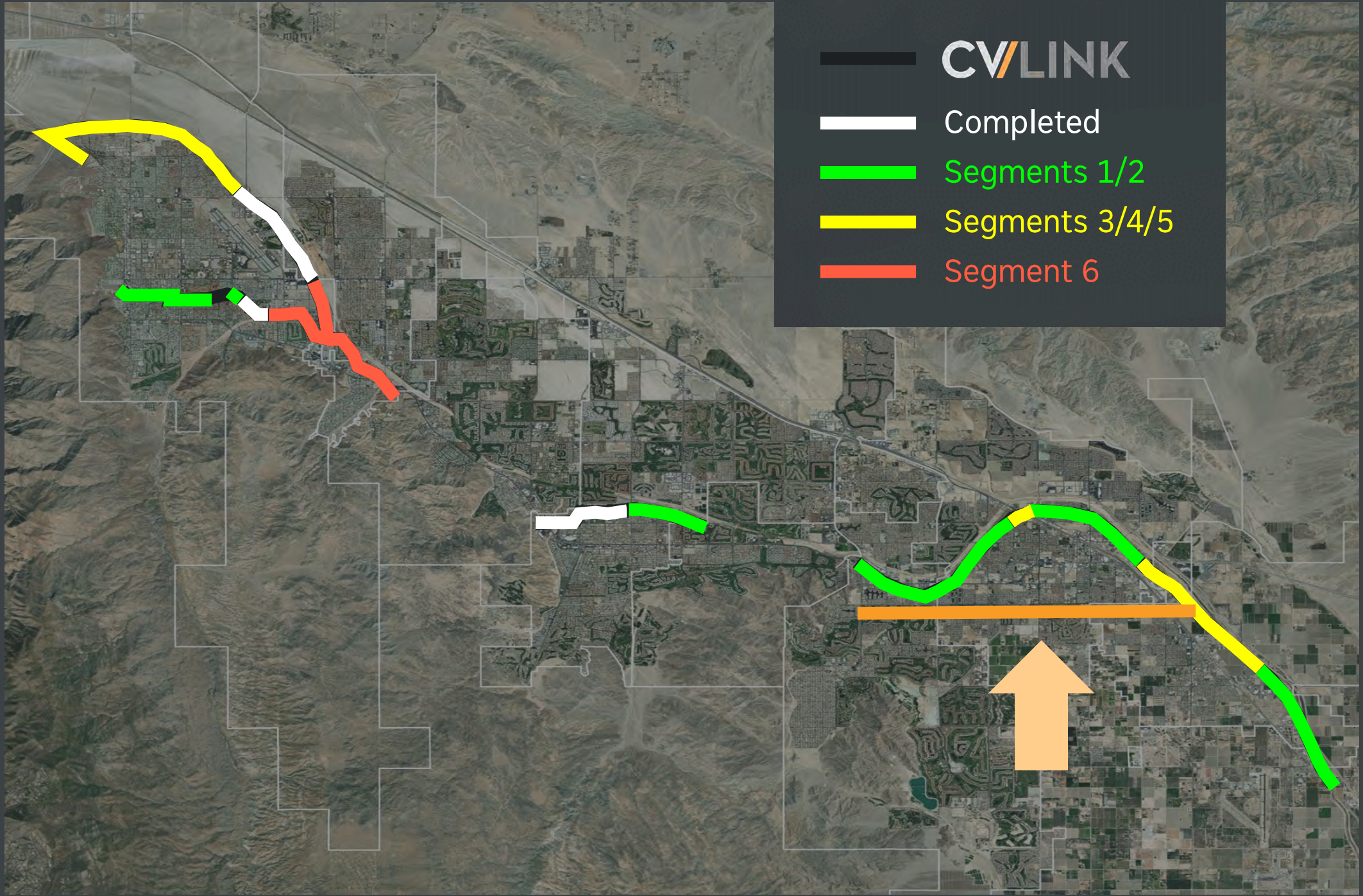
# CV/LINK

## **West Valley**

11-mile uninterrupted pathway from Palm Springs Visitor Center to downtown Cathedral City

## **East Valley**

14-mile uninterrupted pathway from Washington Street in La Quinta through four other jurisdictions to Avenue 56 in Thermal



- CV/Link
- Completed
- Segments 1/2
- Segments 3/4/5
- Segment 6

CV/LINK



ARTS & MUSIC LINE



La Quinta



Coachella

I 110

Indio

CA 86  
Cajon  
Bald





Photo credit: Cyclecide

Existing Sidewalk  
10 ft

Bike  
8 ft

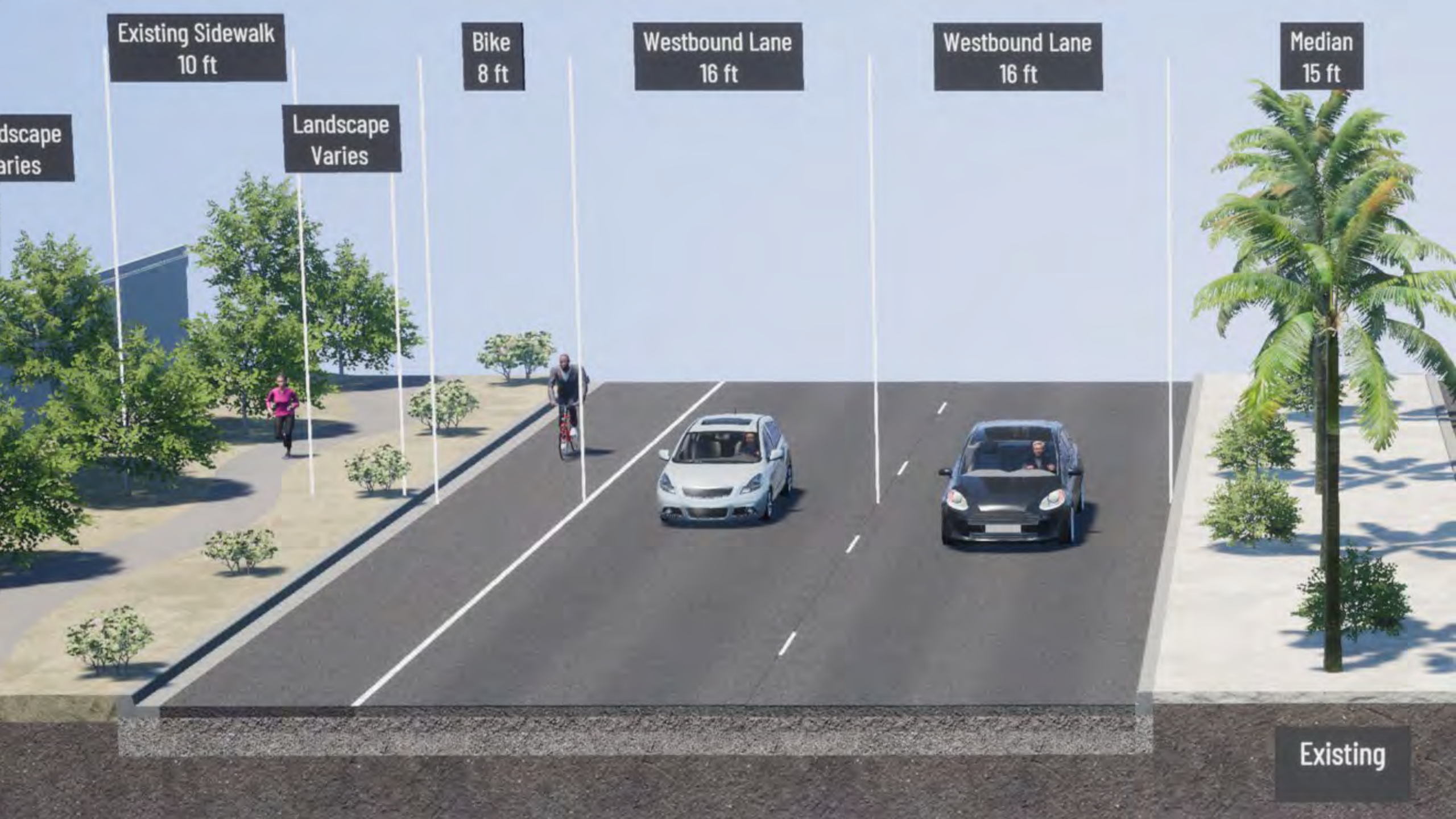
Westbound Lane  
16 ft

Westbound Lane  
16 ft

Median  
15 ft

Landscape  
Varies

Landscape  
Varies



Existing

Existing Sidewalk  
10 ft

Cycle Track  
12 ft

Median  
3 ft

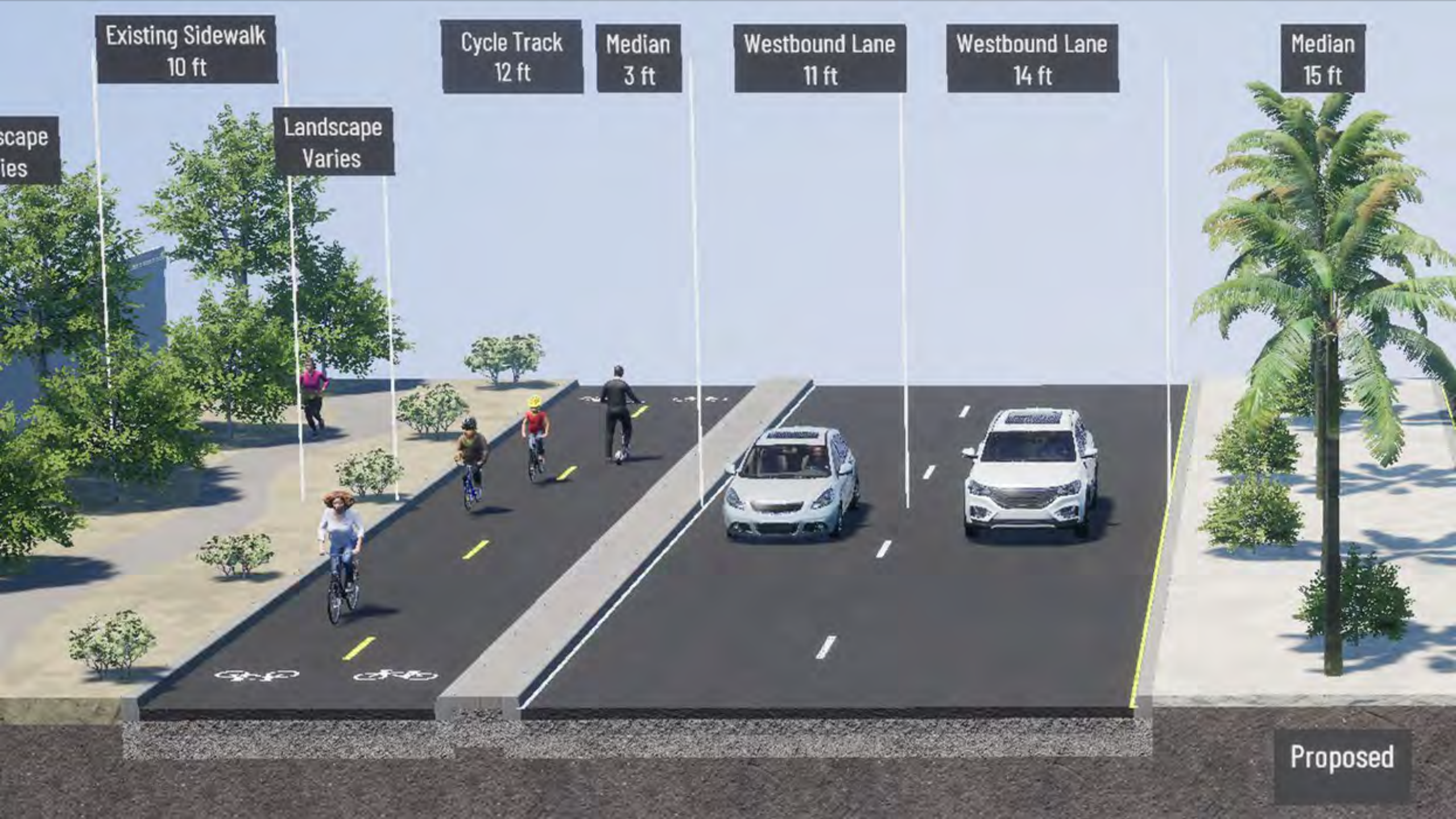
Westbound Lane  
11 ft

Westbound Lane  
14 ft

Median  
15 ft

Landscape  
Varies

Landscape  
Varies



Proposed

A futuristic night scene of a park or plaza. The ground is a mix of light and dark grey paths. There are several glowing green plants and a glowing green circular ring on the path. A cyclist is riding on the path. In the background, there are two tall, thin, glowing green poles. The sky is dark with some light streaks.

# DESIGN / ELEMENTS

ART

INNOVATION

SUSTAINABILITY



Coachella Connector (Van Buren) at Sunset

Rancho Las Flores Park - Coachella



# SUN ARC

SYMMETRICAL/COLORED CONCRETE PATTERN





Indio Light Field along Channel Connector



Channel Connector (South Entrance at Night)

Avenue 48 between Dune Palms & Mira Flores - La Quinta

features: Flow Path / Mosaic Column Lights / Spectrum Circle / Glow Line / Waveform Delineators



Ave 48 at La Quinta Evacuation Channel



Ave 48 at La Quinta Evacuation Channel



Ave 48 at Dune Palms Rd



La Quinta Evacuation Channel Connection to CV Link



**Arts & Music Line  
Hjorth Street & Avenue 48**





**Total Project Cost: \$65.6 million**

**Total Art Cost: \$10.3 Million (16 Percent)**

**Planning**

**\$163,000**

**Design**

**\$680,000**

**Construction**

**\$9,500,000**

**Operations**

**\$TBD**

**Coachella 0.9%**

**La Quinta 2.8%**

**Indio 7.4%**

**CVAG 33.3%**

**ATP 55.6%**



**\$65.6 million**

# Operations & Maintenance

**Curating Student Art**

**Curating Music**

**Maintaining Hardscape**

**Electrical Costs**

**Events & Continued Outreach**

**Cities**

**Golden Voice**

**Schools**

**CVAG**

**CBOs**

Thank you!

Randy Bowman  
rbowman@cvag.org

# Transportation Art at Caltrans





# Caltrans Transportation Art Program

- ❖ Caltrans recognizes the effects of transportation facilities on local communities and encourages integrating these facilities with their surroundings to enhance and reflect the aesthetic, environmental, scenic, and cultural values of the affected community.
- ❖ Caltrans supports enriching the cultural and visual environment by facilitating placement of Transportation Art within the State highway right-of-way.



# How Art is Incorporated in Caltrans Projects:

1. Selected Artists through a Locally Sponsored, Funded, and Maintained Encroachment Permit
2. In-house Collaborative Design and Aesthetic Treatments
3. Specially Funded Caltrans Projects





# How Art is Incorporated in Caltrans Projects:

1. Selected Artists through a Locally Sponsored, Funded, and Maintained Encroachment Permit
2. **In-house Collaborative Design and Aesthetic Treatments**
3. Specially Funded Caltrans Projects



# How Art is Incorporated in Caltrans Projects:

1. Selected Artists through a Locally Sponsored, Funded, and Maintained Encroachment Permit
2. In-house Collaborative Design and Aesthetic Treatments
3. **Specially Funded Caltrans Projects**



## Who can propose installation?

- ❖ Only a public agency -- defined as a city, county, incorporated town, tribal government, or non-federally recognized tribe -- may apply for an Encroachment Permit

# What can be proposed?

- ❖ Transportation Art includes graphic or sculptural artwork, either freestanding or placed upon a required engineered transportation feature
- ❖ Transportation Art should be a visual expression that reflects the local communities' unique aesthetic, environmental, scenic, historical and cultural values



“Looking Forward” Mural by artists Joshua Lawyer and MJ Lindo-Lawyer, Clean CA East Market St UC Salinas, CA 2024



# Transportation Art **must not**:

- ❖ Display text
- ❖ Display symbols or icons
- ❖ Simulate traffic control colors
- ❖ Create a distraction to transportation users
- ❖ Adversely affect existing structures
- ❖ Include moving elements (kinetic art)
- ❖ Restrict sight distance

# Where can it be located?

- ❖ Transportation art includes graphic or sculptural artwork, either freestanding or placed upon engineered transportation features in the State right of way such as:
  - retaining walls or soundwalls
  - bridges, bridge abutments, bridge rails
  - slope paving
  - sidewalks
  - utility cabinets
  - fences



"Woven" by James Patterson;  
Clean California Beautification Hollister, CA, 2024



# Who maintains it?

- ❖ Transportation art is proposed, provided, installed, maintained, and removed or restored by the public agency representing the area in which the art will be installed

The public agency (city, county, incorporated town, tribal government or non-federally recognized tribe) must sign a Maintenance Agreement



“Rise and Shine” Mural by artists Joshua Lawyer and MJ Lindo-Lawyer, Clean CA East Market St UC Salinas, CA 2024



What are the **Approval Steps**?



# Step 1

## Caltrans District Transportation Art Coordinator and the TAP

- ❖ Caltrans District Landscape Architects act as the single focal point contact to assist a local agency with a Transportation Art proposal

We help applicants and their artists develop, evaluate, qualify, and process a Transportation Art submittal and Encroachment Permit.



“Strawberry Butterfly” by Priscilla Martinez;  
Clean California Beautification Watsonville, CA, 2024



**Statewide Program Coordinator**

[Rose.Bishop@dot.ca.gov](mailto:Rose.Bishop@dot.ca.gov)

**District 1 - Eureka** Counties: Del Norte, Humboldt, Lake, Mendocino

[Erin.Ponte@dot.ca.gov](mailto:Erin.Ponte@dot.ca.gov)

**District 2 - Redding** Counties: Lassen, Modoc, Plumas, Shasta, Siskiyou, Tehama, Trinity

[Logan.Moore@dot.ca.gov](mailto:Logan.Moore@dot.ca.gov)

**District 3 - Marysville** Counties: Butte, Colusa, El Dorado, Glenn, Nevada, Placer, Sacramento, Sierra, Sutter, Yolo, Yuba

[Kathryn.Lugo@dot.ca.gov](mailto:Kathryn.Lugo@dot.ca.gov)

**District 4 - Oakland** Counties: Alameda, Contra Costa, Marin, Napa, San Francisco, San Mateo, Santa Clara, Solano, Sonoma

[David.Eng@dot.ca.gov](mailto:David.Eng@dot.ca.gov)

**District 5 - San Luis Obispo** Counties: Santa Barbara, San Benito, San Luis Obispo, Santa Cruz, Monterey

[Corby.Kilmer@dot.ca.gov](mailto:Corby.Kilmer@dot.ca.gov)

**District 6 - Fresno** Counties: Fresno, Madera, Kings, Kern, Tulare

[Marilyn.Chue@dot.ca.gov](mailto:Marilyn.Chue@dot.ca.gov)

**District 7 - Los Angeles –North and South Counties**

[Julee.Park@dot.ca.gov](mailto:Julee.Park@dot.ca.gov)

[Heejae.Lee@dot.ca.gov](mailto:Heejae.Lee@dot.ca.gov)

**District 8 - San Bernardino** Counties: Riverside, San Bernardino

[Timothy.Curran@dot.ca.gov](mailto:Timothy.Curran@dot.ca.gov)

**District 9 - Bishop** Counties: Inyo, Kern/Eastern, Mono

[Caltrans.Art.D9@dot.ca.gov](mailto:Caltrans.Art.D9@dot.ca.gov)

**District 10 - Stockton** Counties: Alpine, Amador, Calaveras, Mariposa, Merced, San Joaquin, Stanislaus, Tuolumne

[Robyn.Fong@dot.ca.gov](mailto:Robyn.Fong@dot.ca.gov)

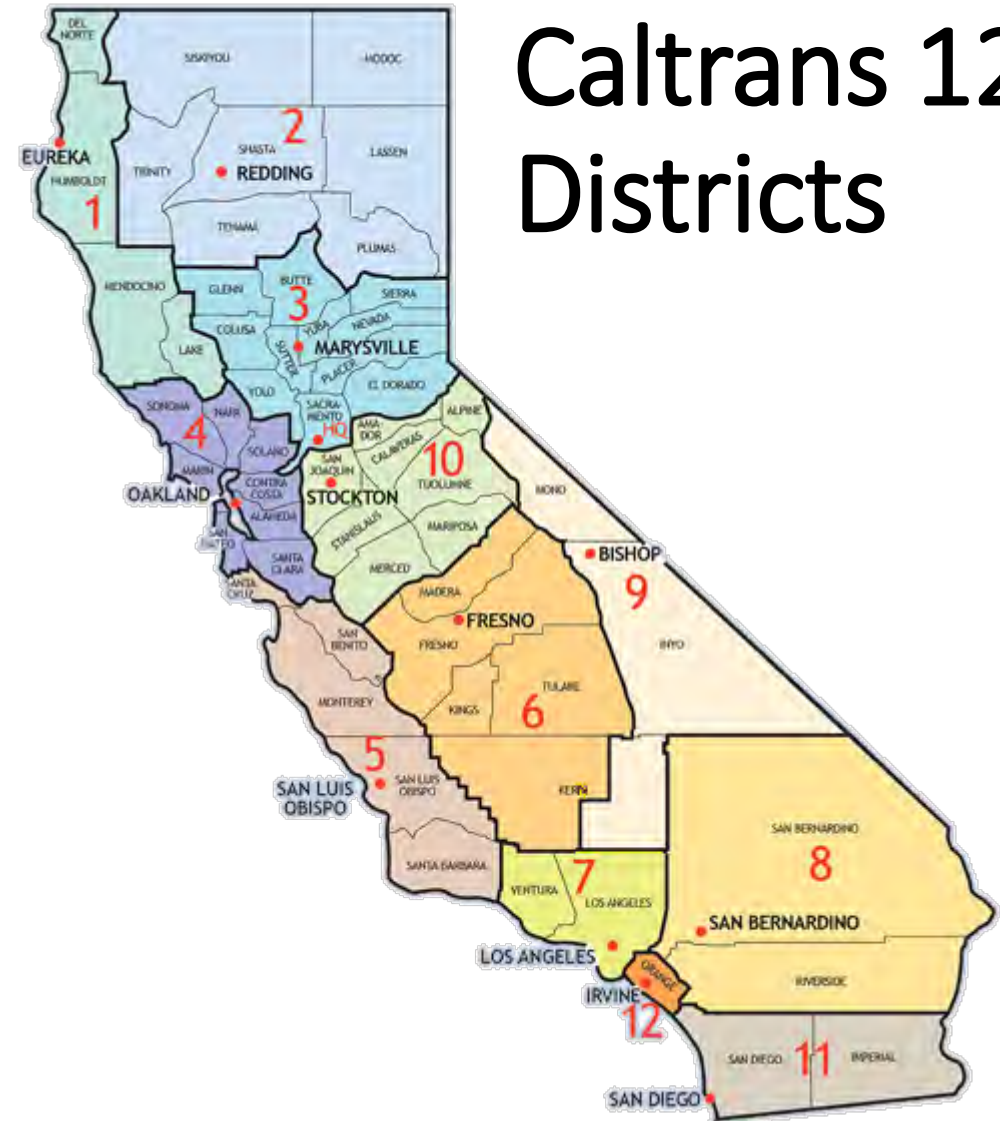
**District 11 - San Diego** Counties: Imperial, San Diego

[Tim.Mann@dot.ca.gov](mailto:Tim.Mann@dot.ca.gov)

**District 12 - Orange County** Counties: Orange

[Eric.Dickson@dot.ca.gov](mailto:Eric.Dickson@dot.ca.gov)

# Caltrans 12 Districts



**TRANSPORTATION ART / COMMUNITY IDENTIFICATION PROPOSAL (TAP/CFP)**  
**INSTRUCTIONS**

- Transportation Art and Community Identification projects proposed by local communities are reviewed and approved for placement within the California State Highway Right of Way through the Caltrans Encroachment Permit process.
- Encroachment Permit Applicants must be a public agency. The public agency may be a city, county, incorporated town, tribal government, or non-bilaterally recognized tribe representing the area in which the Transportation Art or Community Identification will be installed. The proposal must be completed in its entirety and signed by an official who is authorized by the public agency to commit the required local resources for the funding, installation and maintenance of the proposed project.
- Transportation Art/Community Identification included as part of a capital improvement project will be reviewed and approved through the Caltrans project development process, and as directed within these guidelines.
- Guidance for the Transportation Art and Community Identification Programs and requirements for preparing a Transportation Art Proposal (TAP) or Community Identification Proposal (CFP) can be found at <https://dot.ca.gov/programs/transportation-art/transportation-art-proposals>
- A Preliminary Transportation Art Proposal (TAP) or Community Identification Proposal (CFP) must be submitted for review and tentative approval by the District Transportation Art Coordinator (Coordinator) prior to submittal of a Caltrans Encroachment Permit Application.
- Do not attach a separate cover. Place the Cover Sheet of the TAP/CFP on top and follow instructions for attachments. Any attachments should clearly identify the project name, location and related section of proposal. Attachments should be in a reproducible format, sized at 8.5" x 11". Drawings may be printed on 11" x 17" (folded according to style), but 8.5" x 11" is preferred. Photographs or photo simulations should be large enough to show overall composition of the proposal in context with the proposed location. Additional photographs, drawings or photo simulations may be requested by the District Coordinator to show detail that would allow Caltrans to evaluate suitability for installation within the State right-of-way.
- Upon approval of the Preliminary TAP/CFP, including signing the Copyright License and Moral Rights Waiver in Artwork (CLAW), Local Agency Artist Agreement (LAA), and Project Specific Art Maintenance Agreement (PSMA/MMA), the District Transportation Art Coordinator (Coordinator) will advise the applicant to submit an application to the Caltrans District Encroachment Permit Office. The applicant must provide any additional information and clearances, responsibility the Permit Office (such as environmental clearance, traffic control plans, and water pollution control plans) before approval of the Encroachment Permit will be issued. Please see Encroachment Permit submittal requirements at [Caltrans Encroachment Permits](#).
- Contact your District Transportation Art Coordinator with questions regarding TAP/CFP submittals.

Enter text on the following pages where indicated. Check only boxes which apply.  
Save document including all attachments as a electronic Adobe PDF to complete form FOR SIGNATURE

**TRANSPORTATION ART / COMMUNITY IDENTIFICATION PROPOSAL (TAP/CFP)**  
**VICINITY/LOCATION MAP/AERIAL / STREETVIEW**

View of Chorro Street UC Looking South toward Downtown San Luis Obispo

**TRANSPORTATION ART / COMMUNITY IDENTIFICATION PROPOSAL (TAP/CFP)**  
**SPONSOR/APPLICANT CERTIFICATION**

I certify that the City of San Luis Obispo approves of the proposed Transportation Art or Community Identification project and is the responsible public agency representing the community where the Transportation Art or Community Identification will be installed. The City of San Luis Obispo will adhere to and remain in compliance with Caltrans' rules, regulations and any additional restrictive Caltrans may apply to the Transportation Art or Community Identification project, including:

- All costs associated with the design, engineering, testing, construction, and installation of the proposal including labor, materials, supplies, and traffic control, maintenance, and removal.
- Obtaining and documenting local community support and acceptance for the proposed project.
- Providing a signed copy of the executed Local Agency Artist Agreement (LAA), containing terms and conditions between our agency and the artist(s) including identification language acceptable to Caltrans, the City of San Luis Obispo, and the artist(s).
- Executing a project specific or art maintenance agreement (PSMA/MMA) or amending an existing Freeway Maintenance Agreement with Caltrans detailing regular maintenance and repair tasks and potential removal of the proposed project at the end of its project lifespan, or when requested by Caltrans, and retaining the site to a condition as good as or better than at the start of the project.
- Providing a list of names (and current contact information of each responsible person who will be working within the State Highway right-of-way prior to beginning work to install, maintain, rehabilitate, or remove the Transportation Art or Community Identification.

By signing below, I confirm that I have the authority to act as the signatory for the City of San Luis Obispo, and that the statements above are true to my knowledge.

SIGNATURE: \_\_\_\_\_ DATE: \_\_\_\_\_  
PRINT NAME: Jessica Blue TITLE: Transportation Planner/Engineer

**TRANSPORTATION ART / COMMUNITY IDENTIFICATION PROPOSAL (TAP/CFP)**  
**PROPOSED PROJECT NARRATIVE/ARTIST STATEMENT**

**Marmalade Mural Company**  
805-807-1429 [art@marmalademural.com](mailto:art@marmalademural.com) San Luis Obispo, CA

October 8, 2022

Description of Transportation Art:  
North Chorro Greenway Project, San Luis Obispo, CA

The North Chorro Greenway art project consists of a painted mural to be applied to the support columns of the HWY 101 overpass on Chorro Street and decorative art fence paneling between the columns which will be an integral part of the mural image.

The theme of the work is "In the Shadow of the Mountain". The mural depicts the flora and fauna of the natural open space of Cerro San Luis Mountain as well as the green space that surrounds the immediate neighborhood. Each column will highlight a native plant or animal of these natural spaces at a large-scale scale, and in a bright and colorful palette. The intent is to celebrate one of the characteristics most treasured by people who choose San Luis Obispo as their home - the beautiful surroundings of natural spaces, that are also as accessible to all who live or visit this city.

The painted area is approximately 1620 square feet with approximately 1200 square feet of fence paneling extending between each column.

The mural will use Benjamin Moore's Aura Waterborne exterior flat paint, and the City of San Luis Obispo will then apply an Olson Griffin Barite coat to the completed artwork.

**TRANSPORTATION ART / COMMUNITY IDENTIFICATION PROPOSAL (TAP/CFP)**  
**PROPOSED PROJECT PLANS AND IMAGES**

**TRANSPORTATION ART / COMMUNITY IDENTIFICATION PROPOSAL (TAP/CFP)**  
**COVER SHEET**

LOCAL PUBLIC AGENCY SPONSOR/APPLICANT: City of San Luis Obispo  
(check applicable boxes)

STAND ALONE PROJECT  
 ASSOCIATED WITH A PROJECT (PROJECT No.: North Chorro Neighborhood Greenway)  
Encroachment Permit (CALTRANS) NCC 0000

OFFICIAL PROJECT NAME (ARTWORK NAME):  
PROJECT NAME: Chorro St (Downtown Gateway) (CFW) Underpassway Beautification Project

TITLE OF ARTWORK: In the Shadow of the Mountain

LOCATION (City/Unincorporated Community): City of San Luis Obispo COUNTY: San Luis Obispo  
ROUTE No.: US 101 POST MILE: 26.02 BENCHMARK: 85-0006\_05  
NEAREST CROSS STREET: Chorro Street  
(Contact Caltrans District Art Coordinator to provide point mile and BENCHMARK information)

PUBLIC AGENCY RESPONSIBLE CONTACT  
NAME: Jessica Blue  
TITLE: Transportation Planner/Engineer  
ADDRESS: 100 Palo Verde  
CITY/ZIP CODE: San Luis Obispo, 93401  
OFFICE PHONE: 805-769-7000 CELL PHONE: 805-807-1429 EMAIL: art@dot.ca.gov

NATURE OF ARTWORK  
 MAINT. (PAINTING)  
 STATUE/SCULPTURE  
 MOSAIC  
 LIGHTING  
 OTHER (Specify): Decorative  
Decorative Mural, Landscape Lighting, and Fence Paneling  
(Caltrans Office Use)

PERMIT INSTALLATION DATE: January 2023  
 PERMANENT INSTALLATION (Detailing the space before removal or restoration work is anticipated - [TAP/CFP](#))  
 TEMPORARY INSTALLATION (Removal Date): \_\_\_\_\_

PERMIT ENGINEERING EVALUATION REPORT (PEER) REQUIRED:  YES  NO  
(If "Yes," attach Bridge Report and Approval by S&MB to peer structure or dB to structure)

**TRANSPORTATION ART / COMMUNITY IDENTIFICATION PROPOSAL (TAP/CFP)**  
**ATTACHMENTS**

Cover Sheet  
Vicinity / Location Map / Aerial / Typical Streetview

Required Attachments:  
 Attachment A Sponsor/Applicant Certification  
 Attachment B Public Agency Resolution (If any)  
 Attachment C Proposed Project Narrative/Artist Statement  
 Attachment D Existing Conditions (photographs)  
 Attachment E Proposed Project Plans and Images\*\* (as described below)  
 Attachment F Cost Estimate with Cost Breakdown  
 Attachment G Design, Fabrication and Installation Schedule  
 Attachment H Artist Biography/CV  
 Attachment I Copyright License and Moral Rights Waiver in Artwork (CLAW)  
 Attachment J Local Agency Agreement with Artist (LAA) (Signed Copy)  
 Attachment K Community Engagement/Terms of Support  
 Attachment L Maintenance Plan for artwork/Identification and related apparatuses  
 Attachment M Maintenance Agreement (PSMA/MMA)  
 Attachment N Sponsor/Applicant Proof of Insurance  
 Attachment O Structural Maintenance Investigation (SMI) Review (if required) \*\*\*  
 Attachment P Electrical Maintenance Review (if required) \*\*\*  
 Attachment Q Project Engineer/Qualification Report (if required, describe safety considerations/design or construction. Must be stamped by licensed engineer)

Add additional attachments as needed  
 Attachment R \_\_\_\_\_

\* Public Agency Agreement/Resolution authorizing a local arts agency such as an Arts Commission or Arts Council to act on behalf of the Sponsor/Applicant

\*\* Scaled plans, elevations, sections, details, artist renderings (e.g. elevations, sketches, drawings, paintings, models, animations, etc.), color scheme, materials, paper or stain or protective coatings, specifications, fabrication methods, construction equipment, installation techniques and other information necessary to convey location, view from all sides, and day and night-time conditions. If proposed artwork is freestanding or will be attached to a structure include plans, details and specifications stamped by a licensed engineer. If proposal involves lighting, provide description of lighting type, size, orientation, color, temperature, and power source (Caltrans power may not be used) and include plans, details and specifications stamped by a licensed electrical engineer.

\*\*\* The District Transportation Art Coordinator will provide preliminary review by Caltrans S&MB for proposals involving painting or adhering artwork to an existing Caltrans structure or facility, and/or Caltrans Electrical Maintenance for proposals involving painting service jobsites.

**TRANSPORTATION ART / COMMUNITY IDENTIFICATION PROPOSAL (TAP/CFP)**  
**PUBLIC AGENCY RESOLUTION**

(Insert Public Agency Agreement/Resolution authorizing a local arts agency such as Arts Commission or Arts Council to act on behalf of the Sponsor/Applicant or note as "Not Applicable" on this page)

None, see attached Letter with a previous version of form signed 10-20-22  
(Signed 10/20/22)

Approved by Local Official  
**APPLICANT CERTIFICATION**

This letter is the official document fulfilling the requirements of Caltrans Project Development Procedures Manual (PDM) subsections (pages 21-03 and 21-05).

I certify that the City of San Luis Obispo (Public Agency Applicant) approves of the proposed transportation art or community identification project and is the responsible public agency representing the community where the transportation art or community identification will be installed. The City of San Luis Obispo (Public Agency Applicant) will adhere to and remain in compliance with Caltrans' rules, regulations and any additional restrictive Caltrans may apply to the transportation art or community identification project, including:

- All costs associated with the design, engineering, testing, construction and installation of the proposed transportation art including labor, materials, supplies, and traffic control, maintenance and removal.
- Obtaining and documenting local community support and acceptance for the transportation art project.
- Providing an executed and notated OCA containing terms and conditions between Caltrans and the artist(s).
- Executing a PSMA with Caltrans detailing regular maintenance and removal of the transportation art at the end of its project lifespan or when requested by Caltrans detailing maintenance and repair tasks and potential removal of the proposed project at the end of its project lifespan, or when requested by Caltrans, and retaining the site to a condition as good as or better than at the start of the project.
- Providing a signed copy of the executed Local Agency Artist Agreement (LAA) containing identification language acceptable to Caltrans, between City of San Luis Obispo (Public Agency Applicant) and the artist(s).
- Providing a list of names and current contact information of each responsible person who will be working within the State Highway right-of-way prior to beginning work to install, maintain, rehabilitate, or remove the Transportation Art or Community Identification.

By signing below, I confirm that I have the authority to act as the signatory for City of San Luis Obispo (Public Agency Applicant) and that the statements above are true to my knowledge.

Signature: Jessica Blue Date: 10/20/2022  
Print Name: Jessica Blue Title: Transportation Planner/Engineer

**TRANSPORTATION ART / COMMUNITY IDENTIFICATION PROPOSAL (TAP/CFP)**  
**EXISTING CONDITIONS**

View of Chorro Street UC Looking North toward Cerro San Luis (Mountain)

View of Chorro Street UC Looking South toward Downtown San Luis Obispo

**TRANSPORTATION ART / COMMUNITY IDENTIFICATION PROPOSAL (TAP/CFP)**  
**EXISTING CONDITIONS**

Sample TAP





# Step 3

## The CLAW and THE LAA

- ❖ Transportation art located within Caltrans' right-of-way is a benefit to the people of California and becomes property of the State

Prior to the installation of the approved transportation art, the artist(s) and public agency must provide Caltrans with an executed and notarized copyright assignment and transfer agreement containing terms and conditions approved by Caltrans (CLAW) and a Local Agency Agreement (LAA).



"People of the Corn" Tile Mosaic by Kathleen Crocetti;  
Clean California Beautification Watsonville, CA, 2024





“Pajaro Pollinators” Mural by Taylor Reinhold; Clean California Beautification, Watsonville, CA, 2024



# Step 4

## Maintenance Agreement

- ❖ The local agency must assume responsibility for long term maintenance of the artwork

Caltrans will continue to take care of the structure

The local agency may delegate actual work to others, but the contractual relationship will always be between Caltrans and the local jurisdiction



“Sea Otter” Granite Mosaic;  
Arroyo Hondo Vista Point, Gaviota CA, 2015





“Cultural Hero” Tile Mosaic by Kathleen Crocetti;  
Clean California Beautification Watsonville, CA, 2024

## Step 5

# Encroachment Permit

- ❖ Once your TAP and all attachments are done, we submit your project to the Encroachment Permit Office for processing

You may need additional documents such as environmental clearance, a traffic control plan, or electrical plan, or other construction specific items

The final Encroachment Permit will have conditions of approval and inspection requirements





# Collaborative Design and Fabrication





“Life Size California Gray Whale” Granite Mosaic by Corby Kilmer, Fabrication by Creative Edge; Julia Pfeiffer Burns Vista Point, Big Sur, CA, 2015



"Hometown Life" Metal Cutouts by Zach Tanner and Shelby Adams, Fabrication by Parasoleil; King City, CA, 2015



# Accommodating Future Art

“Preserving Our Heritage” Tile Mosaics by local Orcutt high school artists; Orcutt, CA, 2017

# Impacts

- ❖ Placemaking/Unique Community Identity
- ❖ Elicit Awe, A Sense of Arrival
- ❖ Shared Cultural Experiences
- ❖ Focal Point for Celebration

# Benefits

- ❖ Decreased Stress/Reduced Anxiety
- ❖ Improved Neighborhood Safety
- ❖ Change of Transportation Mode Choice
- ❖ Improved Safety for Peds and Bicyclists
- ❖ Motivation for Further Enhancements to Improve Livability and Economic Prosperity





Public Art isn't just something beautiful or interesting to look at; it is a powerful tool for positive change.





# Questions??

Corby Kilmer | District 5 Senior Landscape Architect  
District 5 Transportation Art Coordinator  
District 5 Project Development Design III  
805-721-2805

California Department of Transportation  
50 Higuera Street San Luis Obispo California 93401  
TTY 711  
she/her





# San Benito County Arts Council

ART in TRANSPORTATION

**Jennifer Laine, Executive Director**



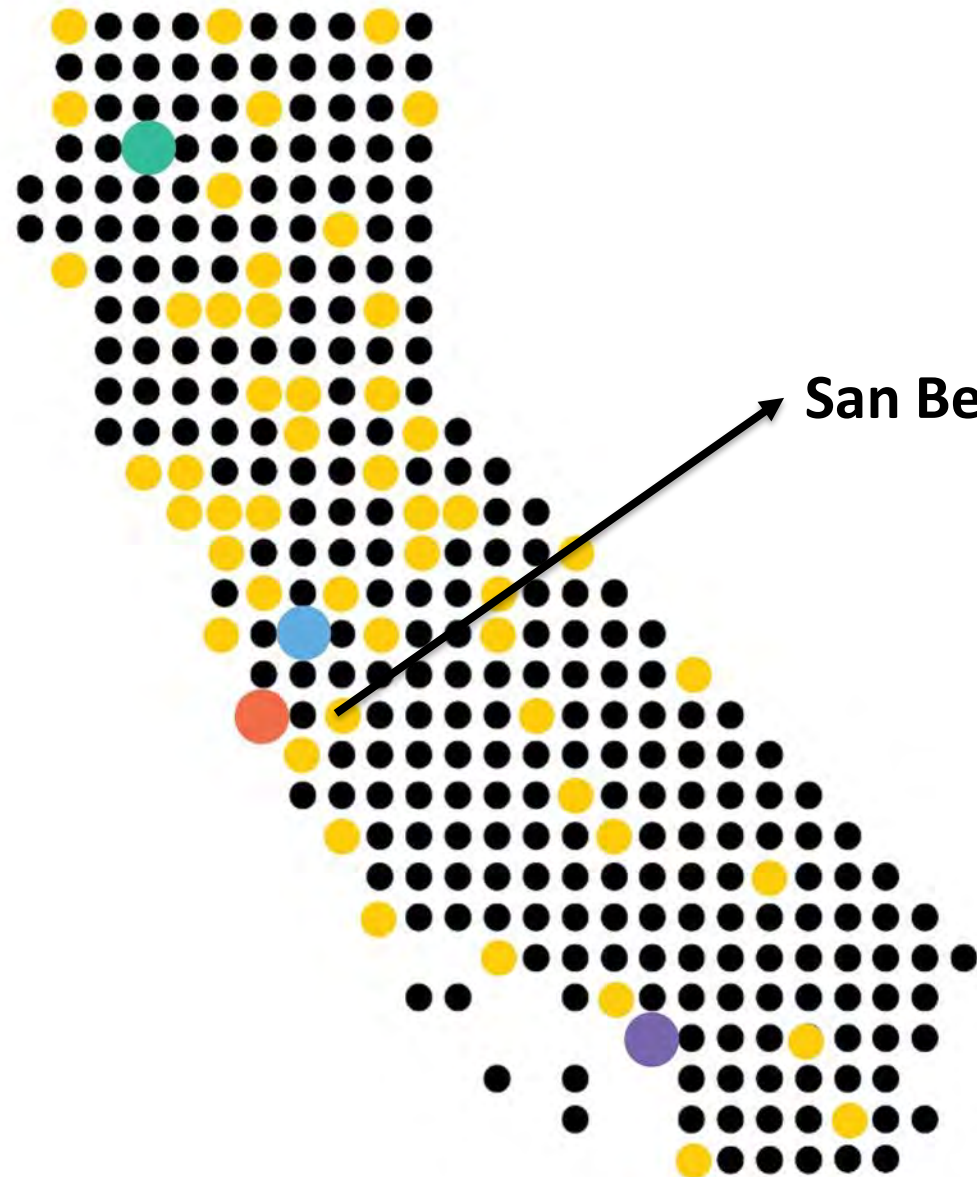
Our mission is to activate and engage people, communities and spaces in San Benito County through arts, culture and creativity.



LINKING the California Arts Council to communities statewide  
INCREASING access to art for all residents  
UPLIFTING artists and arts organizations  
CREATING vibrant, healthy, and equitable communities

# State-Local Partner to the California Arts Council

SLPs advance the California Arts **Council's** mission "to strengthen arts, culture, and creative expression as the tools to cultivate a better California for **all**", all at the local level.



**San Benito County Arts Council**

How were the State-Local Partners established?

- Established in 1980 to create a formal partnership system between the state arts agency and county-level arts agencies throughout the entire state.
- 54 of the **state's** 58 counties have an officially designated SLP
- SLP designation is established through an official legal resolution approved by each **County's** elected Board of Supervisors.

Link to [SLP Directory](http://www.arts.ca.gov) at [www.arts.ca.gov](http://www.arts.ca.gov)

# Clean California Program: California Department of Transportation



Launched by Governor Newsom as part of his California Comeback Plan, **Clean California invested over \$1B** for state and local governments to clean up trash and debris statewide, **beautify** community gateways and public areas along highways, streets and roads, and to **provide good jobs** to thousands of Californians.

# Request for Qualifications: Statewide Call for Artists

Caltrans District 5: Washington St. Underpass & Highway 25 Projects

## REQUEST FOR QUALIFICATIONS (RFQ)



### Washington Street Underpass Public Art Project

San Juan Bautista, CA

Clean California Program, 2022

**Submission Deadline: Friday, April 29, 2022 (10:59pm PST)**

#### RFQ Process

- ✓ Statewide Call
- ✓ Online Submission Process: Call for Entry (CAFÉ)
- ✓ 7 Member Review Panel
- ✓ Read, score & discussion applications
- ✓ Finalist Interviews
- ✓ Final Selection

#### Review Criteria

- ✓ Artistic Merit
- ✓ Experience & Ability
- ✓ Project Sustainability
- ✓ Teamwork
- ✓ Budget
- ✓ Technical Practicality
- ✓ Alignment with Goals
- ✓ Preference for local & regional artists

#### Finalist Interviews

- ✓ Design Concept (\$500 stipend)
- ✓ Authentic Community Engagement

# Clean California Highway Beautification Program

## Washington St. Underpass Public Art Project- San Juan Bautista



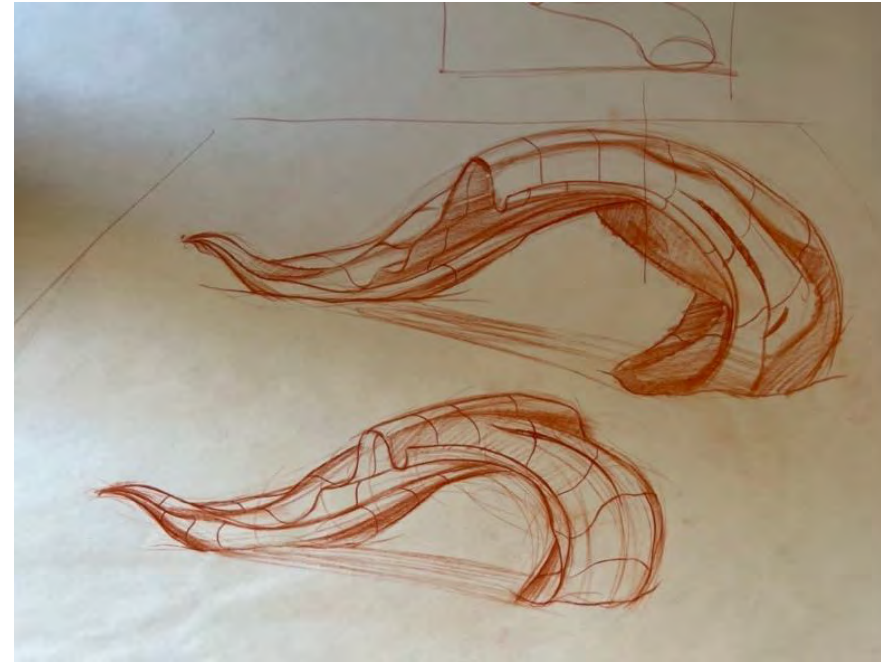
### Quick Facts

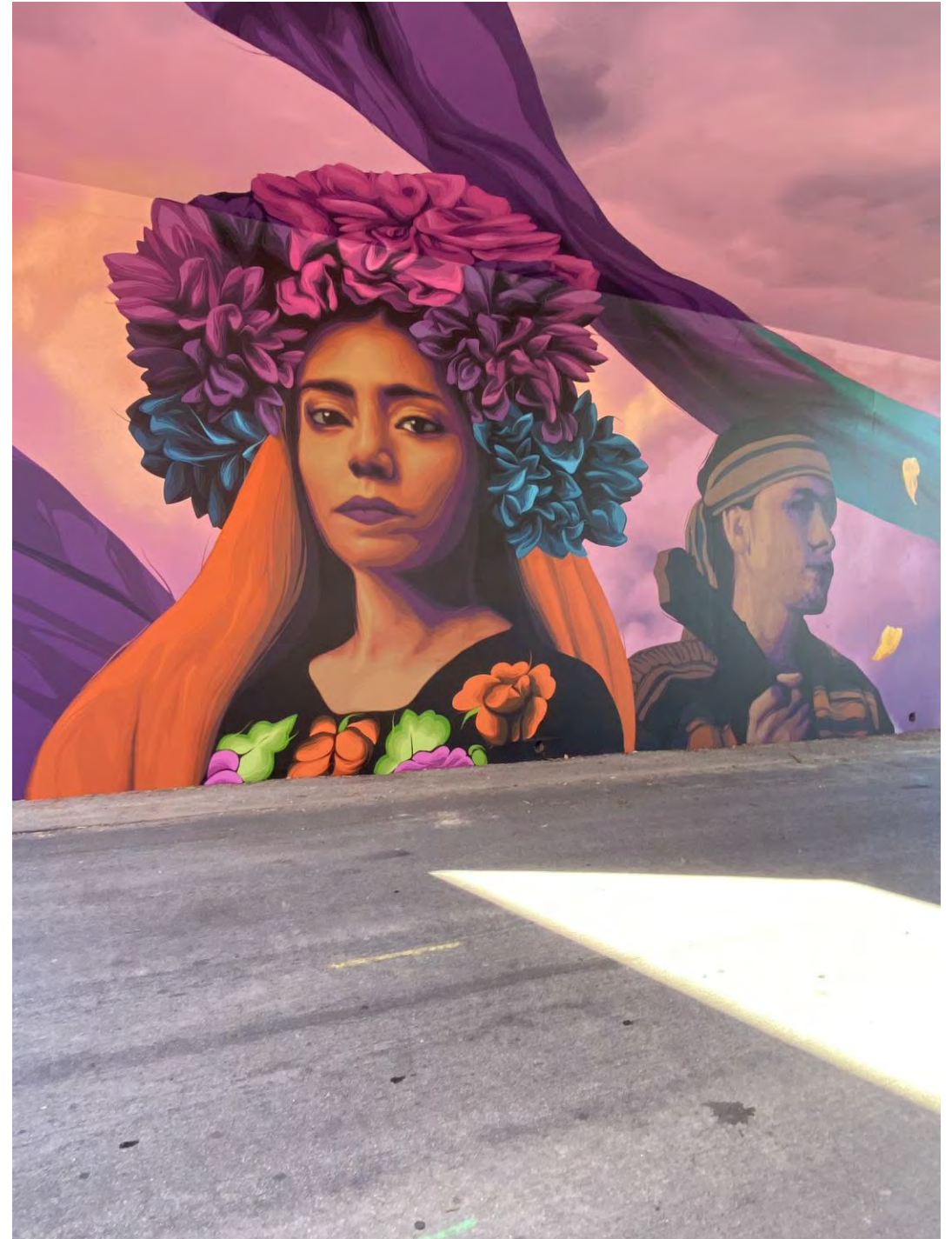
Project Costs: \$1.04M

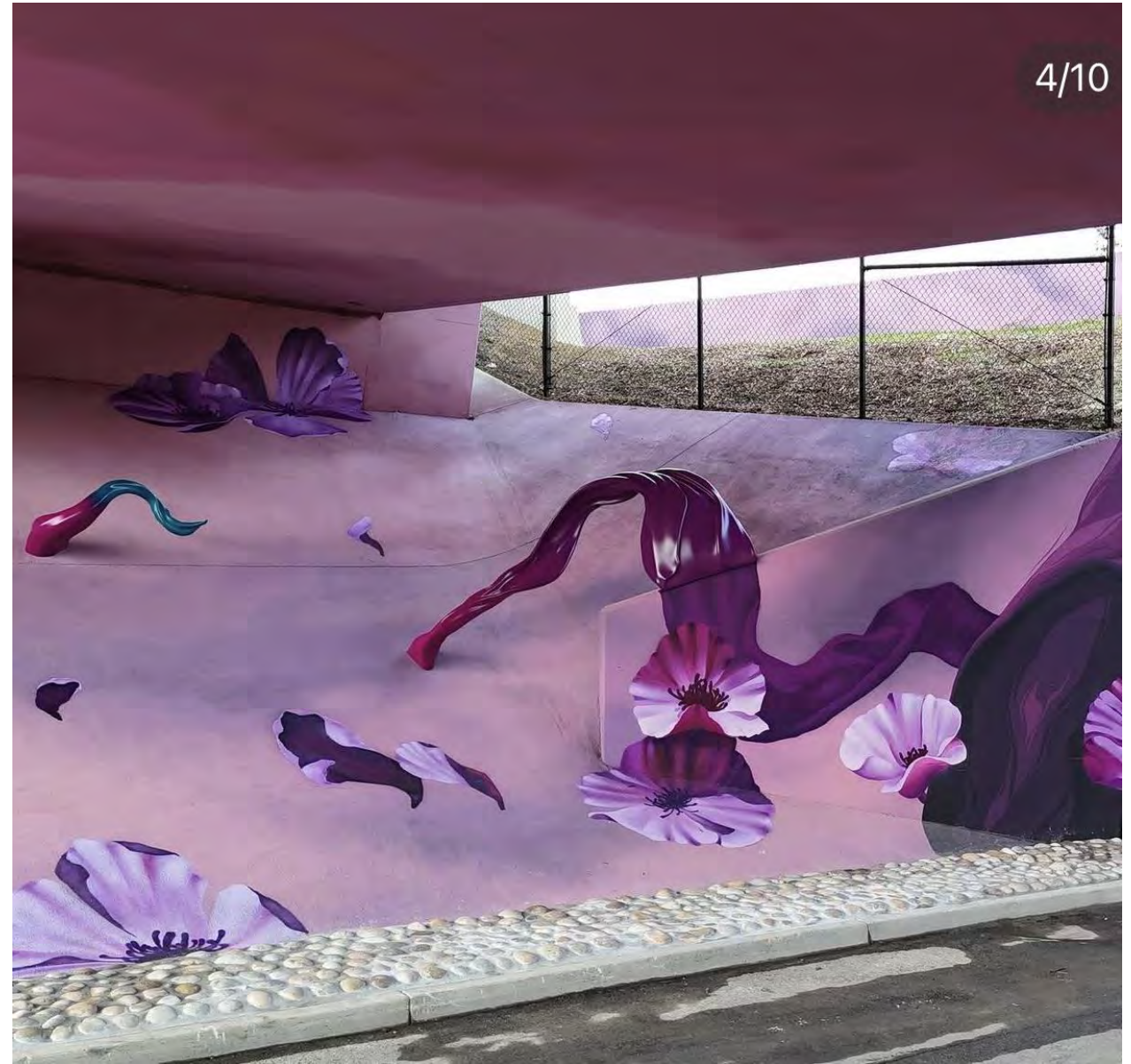
Artwork Budget: \$160,000

- Slope Paving
- Drought Tolerant Plants
- New Fencing
- New Mural

# “Fabric of Life” Design by Yanoë x Zoueh









# Ribbon Cutting/ Visit by CA Transportation Commission



# Clean California Highway Beautification Program

## Highway 25 Public Art Project- Hollister



### Quick Facts

Project Budget: \$1.1M

Sculpture Budget: \$130,000

Utility Box Budget: \$7,500

- Enhance existing walkways
- Install irrigation
- Drought tolerant landscaping
- Improve aesthetics
- 3D Sculpture Installation
- 5 Utility Box Murals

# “Woven” by James Peterson, Art Contraptions



# “Woven” by James Peterson



# Utility Box Mural Project: Highway 25



L to R: Venecia Prudencio, Joshua Liem, Clay Peer

# Art in Transit Project: Public Health, Water Awareness & Census



L to R: Venecia Prudencio, Cindy Couling

# Art Benches: Dunne Park Project, 2017



# Local Perspective: Working with Artists & Community

Community Engagement	Artist Support	Celebrate & Advocate
<ul style="list-style-type: none"> <li>• Conduct <b>community surveys</b> to inform call-for-artists, RFQs</li> <li>• Invite community members to serve on <b>review panel</b></li> <li>• Facilitate <b>1:1 artist interviews</b> with community members</li> <li>• Display <b>design concepts in community spaces</b> and at community events (farmer's markets, cafes, schools)</li> <li>• <b>Marketing &amp; outreach</b>- social media, articles in local media, build excitement and hype around the project</li> <li>• Find opportunities to <b>introduce artists to the community</b> &amp; vice versa- share past projects</li> </ul>	<ul style="list-style-type: none"> <li>• <b>Artist stipends</b> for RFQ submissions (finalists)</li> <li>• Do not ask for free labor or design work; compensate artists</li> <li>• Outline any existing or foreseeable <b>requirements or expectations</b> ahead of time- i.e. travel, community engagement, liability insurance, licenses, etc.</li> <li>• <b>Appropriately budget</b> for size &amp; scope of project; be realistic about material costs</li> <li>• <b>Document</b> process through video, photos, interviews, testimonials</li> <li>• <b>Credit artists</b>; educate others on using artwork appropriately and crediting artists</li> <li>• Serve as <b>“translator”</b> between different agencies &amp; stakeholders; <b>over-meet</b> in the beginning, relationship building</li> </ul>	<ul style="list-style-type: none"> <li>• Invite the <b>community to participate &amp; celebrate</b>- artist exhibitions, artist talks, social media posts, print media</li> <li>• City &amp; County <b>presentations &amp; proclamations</b></li> <li>• Host <b>site visits</b> and walking tours</li> <li>• <b>Tourism &amp; branding</b> opportunities</li> <li>• Document &amp; report back to funders, stakeholders</li> <li>• Enter <b>award</b> competitions (i.e. CODAawards)</li> <li>• Present projects at <b>conferences</b> and convenings</li> <li>• Continue to connect with and support artists</li> <li>• <b>Advocate for legislation and funding</b> that supports <b>public art</b></li> </ul>



# Thank You & Call to Action!



Jennifer Laine, Executive Director, San Benito County Arts Council  
[info@sanbenitoarts.org](mailto:info@sanbenitoarts.org)/ 831.636.2787  
[www.sanbenitoarts.org](http://www.sanbenitoarts.org)



Q & A time



# CDPH ATRC NI Technical Assistance Staff



Alicia Ramos

Districts: 1, 2, 4, 5, 6, 9, 10

[Alicia.Ramos@cdph.ca.gov](mailto:Alicia.Ramos@cdph.ca.gov)



Marianne Hernandez

Districts: 3, 7, 8, 11, 12

[Marianne.Hernandez@cdph.ca.gov](mailto:Marianne.Hernandez@cdph.ca.gov)





**Thank You!**