

# Designing Resilient Streets through Green Infrastructure

Tuesday, November 18, 2025, 10:00 a.m. – 11:30 a.m.



# ATRC Webinar Logistics

---

- Share your questions throughout the webinar by using the Q&A function.
- Please complete the post-webinar attendee survey.
- The webinar will be recorded and shared with all registered participants along with the slides and resources.



# Webinar Objectives

---

- Understand how green infrastructure can serve as a public health strategy to promote health equity and climate resilience in active transportation planning.
- Learn what green stormwater infrastructure is, its benefits, and how it is being implemented to many Bay Area cities.
- Identify the requirements and collaborative processes for installing green infrastructure in Active Transportation Program (ATP) projects with the California Conservation Corps.



# Guest Speakers

---



**Daniel Woo**

Climate Change & Health Equity  
Section Manager

CA Department of Public Health



**Peter Schultze-Allen**

Senior Technical Scientist  
EOA, Inc.



**Anthony Pham**

Program Coordinator  
CA Conservation Corps



**Sarah Ward**

Special Advisor  
Environmental & Energy  
Consulting





# Green Infrastructure for Health, Equity & Climate Resilience

**Dan Woo, MPH, MS, LEED AP ND (he/him)** | Section Manager  
Climate Change & Health Equity Section  
Office of Health Equity  
California Department of Public Health

**November 18, 2025**

*ATRC Webinar: Designing Resilient Streets  
through Green Infrastructure*

# HEALTH CARE



Individuals



Treatment



“Downstream”

# PUBLIC HEALTH



Populations



Prevention

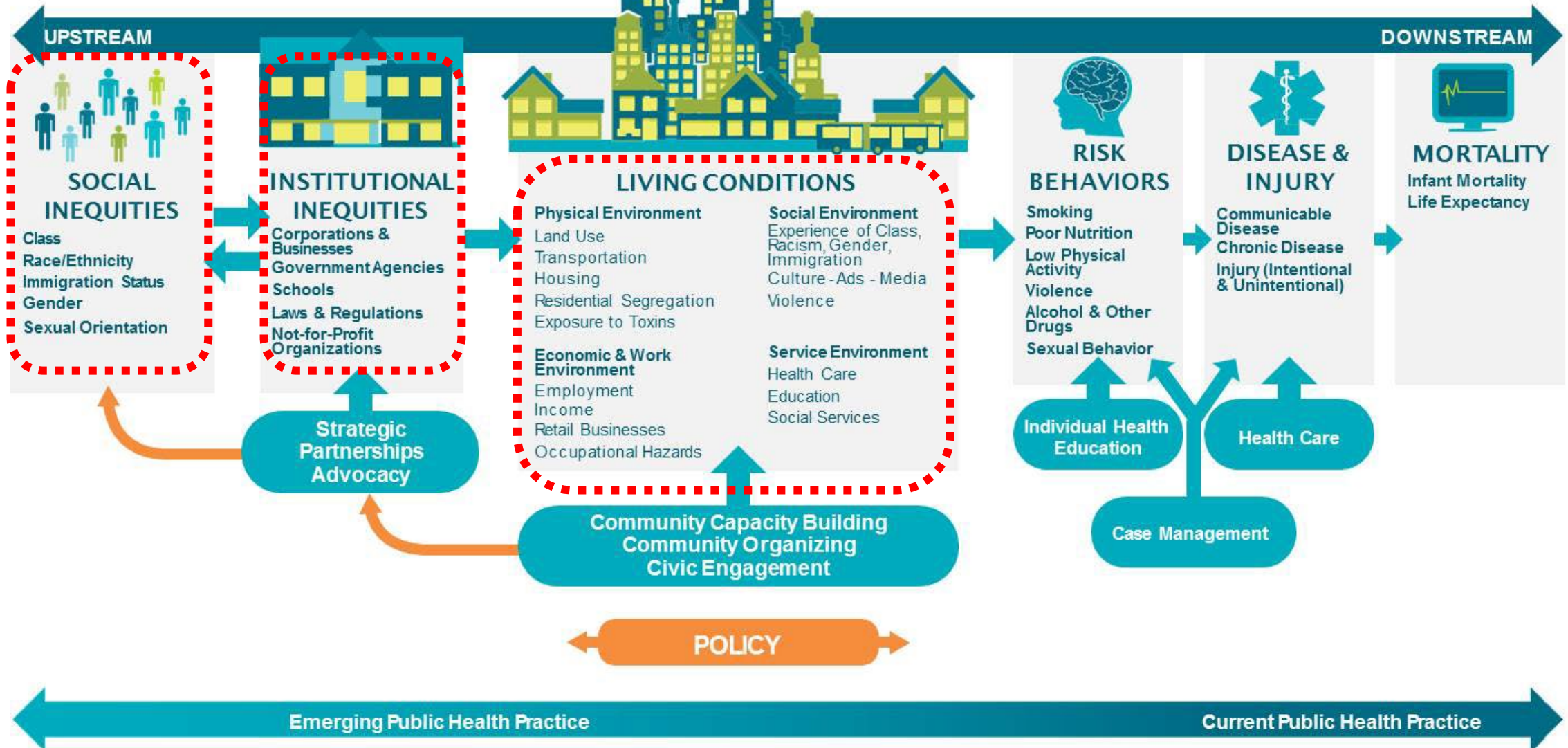


“Upstream”

**Public Health:** “What society does collectively to assure the conditions for people to be healthy.” *(Institute of Medicine)*

# Addressing the Causes of the Causes

## A PUBLIC HEALTH FRAMEWORK FOR REDUCING HEALTH INEQUITIES BAY AREA REGIONAL HEALTH INEQUITIES INITIATIVE



Source: Bay Area Regional Health Inequities Initiative (BARHII) Conceptual Framework, 2006.

## Air Pollution & Increasing Allergens

Asthma, allergies, cardiovascular and respiratory diseases

## Extreme Heat

Heat-related illness and death, cardiovascular failure

## Drought

Water supply impacts, dust storms, Valley Fever

## Environmental Degradation

Forced migration, civil conflict, loss of jobs and income

## Wildfires & Smoke

Injuries, fatalities, loss of homes, cardiovascular and respiratory diseases

## Degraded Living Conditions & Social Inequities

Exacerbation of racial and health inequities and vulnerabilities, loss of employment

## Changes In Vector Ecology

Lyme disease, West Nile Virus, hantavirus, malaria, encephalitis

## Food System Impacts

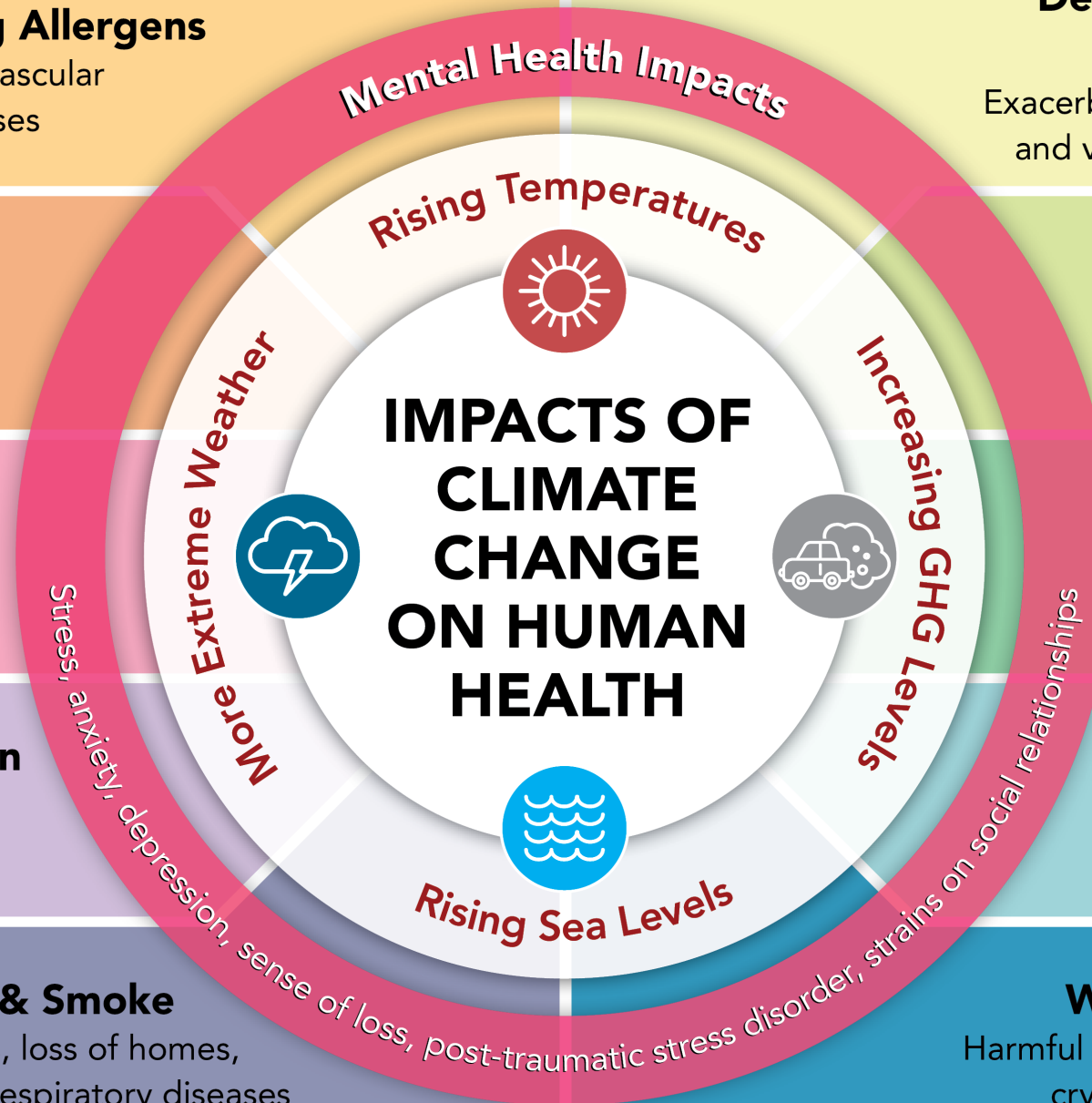
Malnutrition, food insecurity, higher food prices, foodborne illness

## Severe Weather & Floods

Injuries, fatalities, loss of homes, indoor fungi and mold

## Water Quality Impacts

Harmful algal blooms, campylobacteriosis, cryptosporidiosis, leptospirosis







**CLIMATE CHANGE IS  
ALREADY HARMING  
HUMAN HEALTH.**

**PEOPLE FACING  
INEQUITIES HURT  
FIRST AND WORST.**

Image: Public News Service





## Equity = Fair distribution of power and resources

### Equity mechanisms:

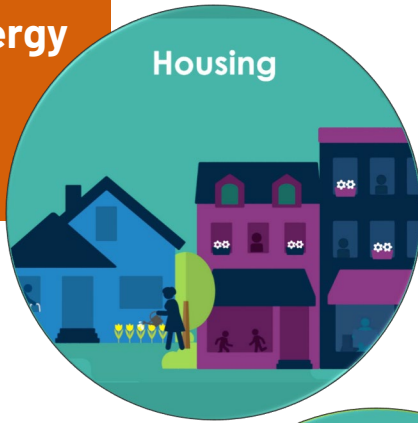
- Funding
- Higher levels of service
- Facilities
- Capacity building or training
- Jobs
- Decision-making power



Photo: Getty Images

# A Low-Carbon, Climate-Resilient Community is...

Healthy, energy efficient, & affordable housing!



Clean air, green spaces for recreation!



Urban and community greening to keep cities cool.



Where there are good jobs, and safe neighborhoods.



Healthy built environment including walkable & bikeable communities!



Where people know and care for one another.

Kids have safe places to play and learn.



Healthy Eating



Access to affordable, healthy foods.

## A Healthy, Equitable Community

# Urban & Community Greening: Benefits to Health

- Improved mental health
- Enhanced brain development in children
- Improved cognitive function in adults
- Reduced stress and depression
- Improvements in general health
- Reductions in chronic disease (i.e., diabetes, cardiovascular disease)
- Reductions in premature mortality
- Positive association with birth weight

# Quantifying the Health Benefits of Active Transportation

Healthy Mobility Options Tool / ITHIM CA: <https://skylab.cdph.ca.gov/HealthyMobilityOptionTool-ITHIM>

## Meeting the California Transportation Plan's 2050 Goal for Increased Walking, Cycling, Rolling, and Transit Use:



**7,838 early deaths prevented annually** through increased active transportation (walking, cycling, transit)



**Reduced burden of chronic diseases** – heart disease, stroke, diabetes, dementia, cancer (colon, breast), depression



Projected health benefits valued between **\$52.5 - \$171.7 billion** per year

Pathway	Avoided Deaths		Decrease in Disability Adjusted Life Year (DALYs)	
	PAF (%)	Count	PAF (%)	Value
Physical Activity	3.3	7,838	3.4	102,642
Air Pollution	< 0.1	15.7	< 0.1	147
Road Traffic Injuries	2.2	88.2	2.2	4,293
Total	1.8	7,941	1.9	107,082
PAF, population attributable fraction; DALY, disability adjusted life year.				

\*Quantified health benefits produced by the California Healthy Mobility Options Tool, using the California Transportation Plan 2050 scenario and expected California population and disease trends for the year 2050.

# Heat's Impacts on Health

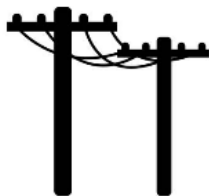
- Leads to **dehydration, heat-related illness** and **death**
- **Aggravates chronic health conditions** like cardiovascular and respiratory illness, kidney disease
- Correlated with **adverse pregnancy** and **birth outcomes**
- Associated with **increased mental health distress** and **suicidality**
- **Increases the risk for interpersonal and intimate partner violence**
- **Impairs daily functioning** (like driving) due to **poor sleep**
- Often **coincides with air pollution, wildfire smoke, and/or drought conditions**, which also worsen health



# Hot by Design



Amid extreme heat, some power grids may struggle to keep up with rising energy demand



## HOT SCHOOLYARDS

Hot days lead to unhealthy temperatures. How can California help schools add shade to playgrounds?

On hot, sunny days when schoolyard temperatures soar, surfaces can get hot enough to burn skin.



# Cooling Solutions



## Smart Land Use

Layout promotes air flow and passive cooling

Enhances community cohesion and vitality



## Greening

Reduces urban heat island effect

Improves outdoor air quality



## Weatherization

Cools structures more efficiently and affordably

Improves indoor air quality and comfort



## Public Transportation

Reduces air pollution and waste heat from cars

Added shade at transit stops and air-conditioning in vehicles



## Renewable Energy

Significantly reduces release of heat-trapping pollutants

Distributed energy resources and battery storage

# Potential State Funding Opportunities

- **Urban Greening Program** (CA Natural Resources Agency)
- **Urban and Community Forestry Grants** (CAL FIRE)





**THANK YOU!**

**Dan Woo** | [Daniel.Woo@cdph.ca.gov](mailto:Daniel.Woo@cdph.ca.gov)  
California Department of Public Health





# Urban Greening: Advancing Green & Complete Streets for Healthier Communities



Santa Clara Valley Urban Runoff  
Pollution Prevention Program

**ATRC Webinar:** Tuesday, 11/18/25  
Peter Schultze-Allen (SCVURPPP/EOA)





# Presentation Outline

## What is Green Stormwater Infrastructure (GSI)?

- GSI benefits
- SF Bay Area Stormwater Permit Requirements
- What are Green Streets and Complete Streets?

## Green Street Implementation (2005-2025)

- Example projects
- Implementation drivers
- Successes and challenges

## Summary and Resources



Source: Lotus Water



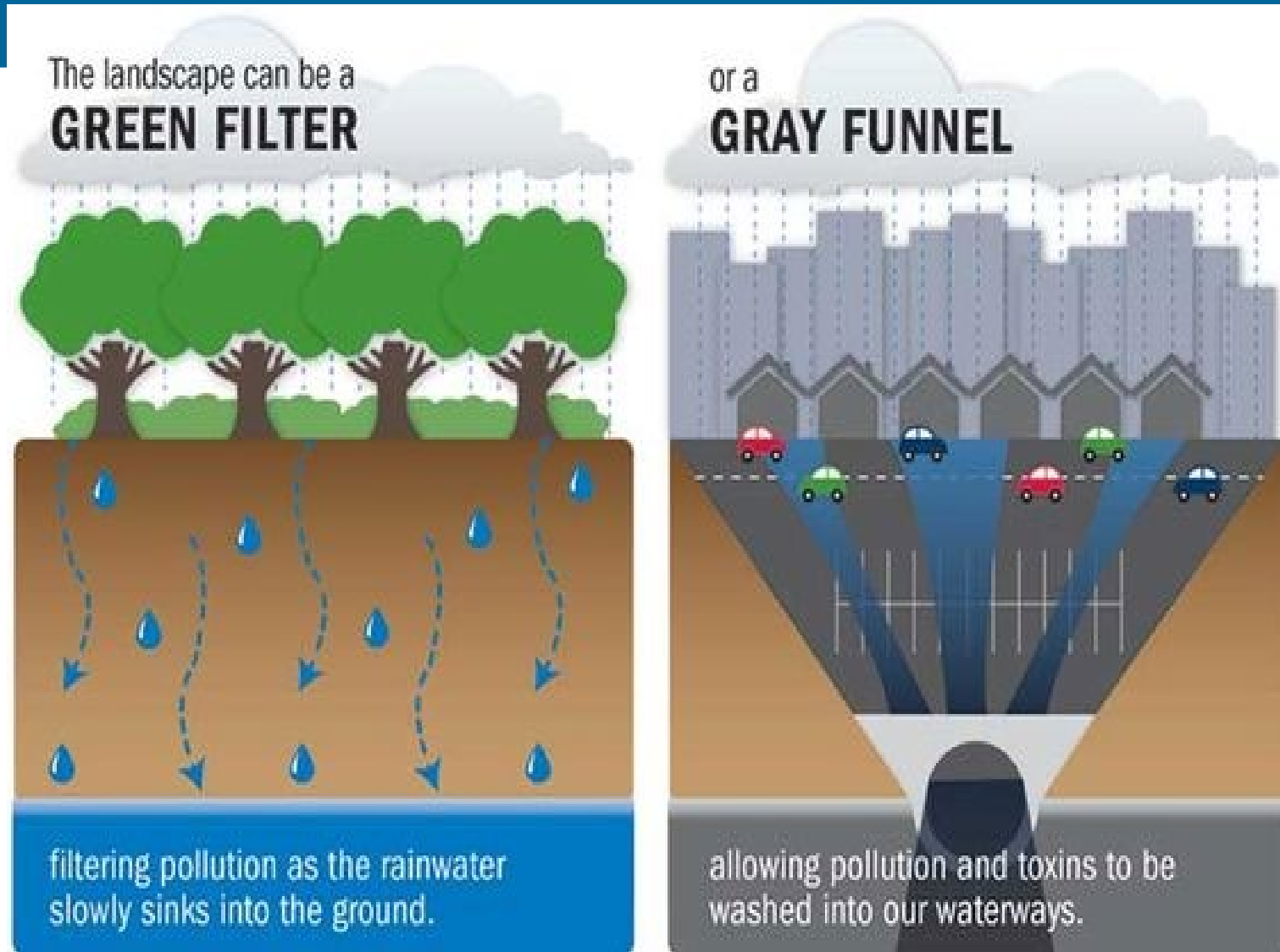
# What is Green Stormwater Infrastructure (GSI)?

**GSI or GI:** Systems that use **natural processes** to protect, improve and manage stormwater runoff, while creating healthier, **cooler** urban areas



# GSI Benefits

- Flow reduction
- Pollutant reduction
- Reduced local flooding
- Urban greening/**shade**
- Urban **heat** reduction
- Climate **resiliency**
- Increased wildlife habitat
- Cooler buildings
- Cleaner **air**
- More beautiful streets!



Source: Chesapeake Bay Foundation



# Stormwater Background

## Water Quality Impacts of Urbanization

Stormwater is now recognized as a **valuable resource**. The Clean Water Act requires action where there are pollutants.

**A GUIDE TO EATING FISH from SAN FRANCISCO BAY**  
(ALAMEDA, CONTRA COSTA, MARIN, NAPA, SAN FRANCISCO, SAN MATEO, SANTA CLARA, SOLANO, SONOMA COUNTIES)

**Women**  
(18 – 49 Years)

**Children**  
(1 – 17 Years)

**2 TOTAL SERVINGS A WEEK**

OR

**1 TOTAL SERVING A WEEK**

**0 DO NOT EAT**

**Do Not Eat Any Fish from Laitzen Channel**

**Serving Size**  
A serving of fish is about the size and thickness of your hand. Give children smaller servings.

**For Adults**

**For Children**

**Eat only the skinless fillet**

**Eat only the meat**

Some chemicals are higher in the skin, fat, and guts.

Updated 04/2023

California Office of Environmental Health Hazard Assessment  
web: [www.oehha.ca.gov/fish](http://www.oehha.ca.gov/fish)  
email: [fish@oehha.ca.gov](mailto:fish@oehha.ca.gov)  
phone: (916) 324-7572

**Fish List:**

- American Shad (high in omega-3s)
- Chinook (King) Salmon (high in omega-3s)
- California Halibut
- Jacksmelt
- Barred Surperch
- Black Perch
- Walleye Surperch
- Northern Anchovy (high in omega-3s)
- Rubberlip Surperch
- White Surperch
- White Croaker
- Shark species
- Striped Bass
- Topsmelt
- Mississippi Silverside
- Pacific Sardine
- Shiner Perch
- White Sturgeon



Source: <https://www.smchealth.org/safe-eat-fish-san-francisco-bay>

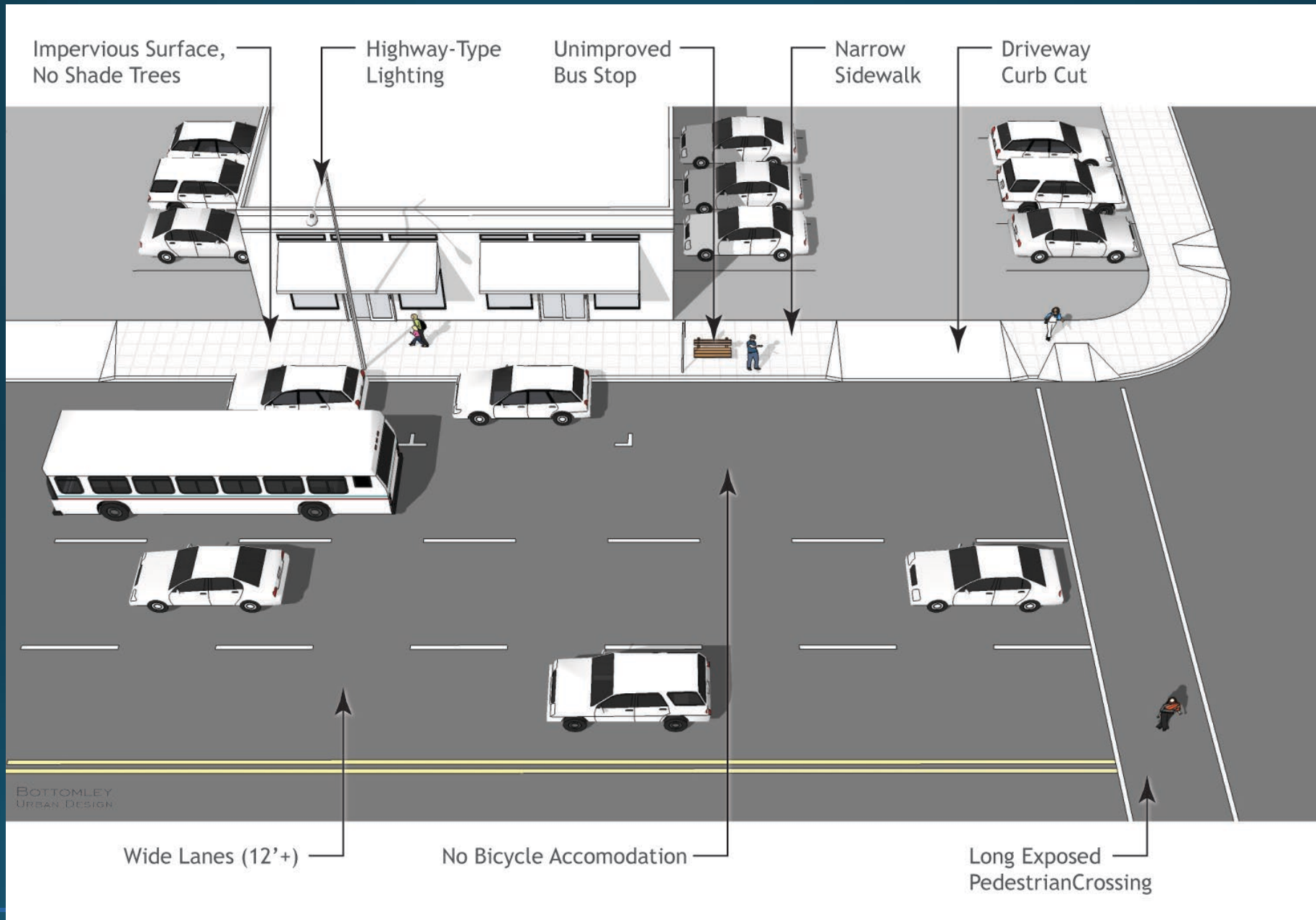
# Bay Area Municipal Regional Stormwater Permit Background

- The 3<sup>rd</sup> municipal regional stormwater permit (MRP 3) was approved in 2022 for 79 permittees in:
  - Alameda, Contra Costa, San Mateo, and Santa Clara Counties, and Fairfield-Suisun and Vallejo
- There are other stormwater permits for San Francisco and North Bay communities
- The MRP requires certain types of roadway projects to implement GSI

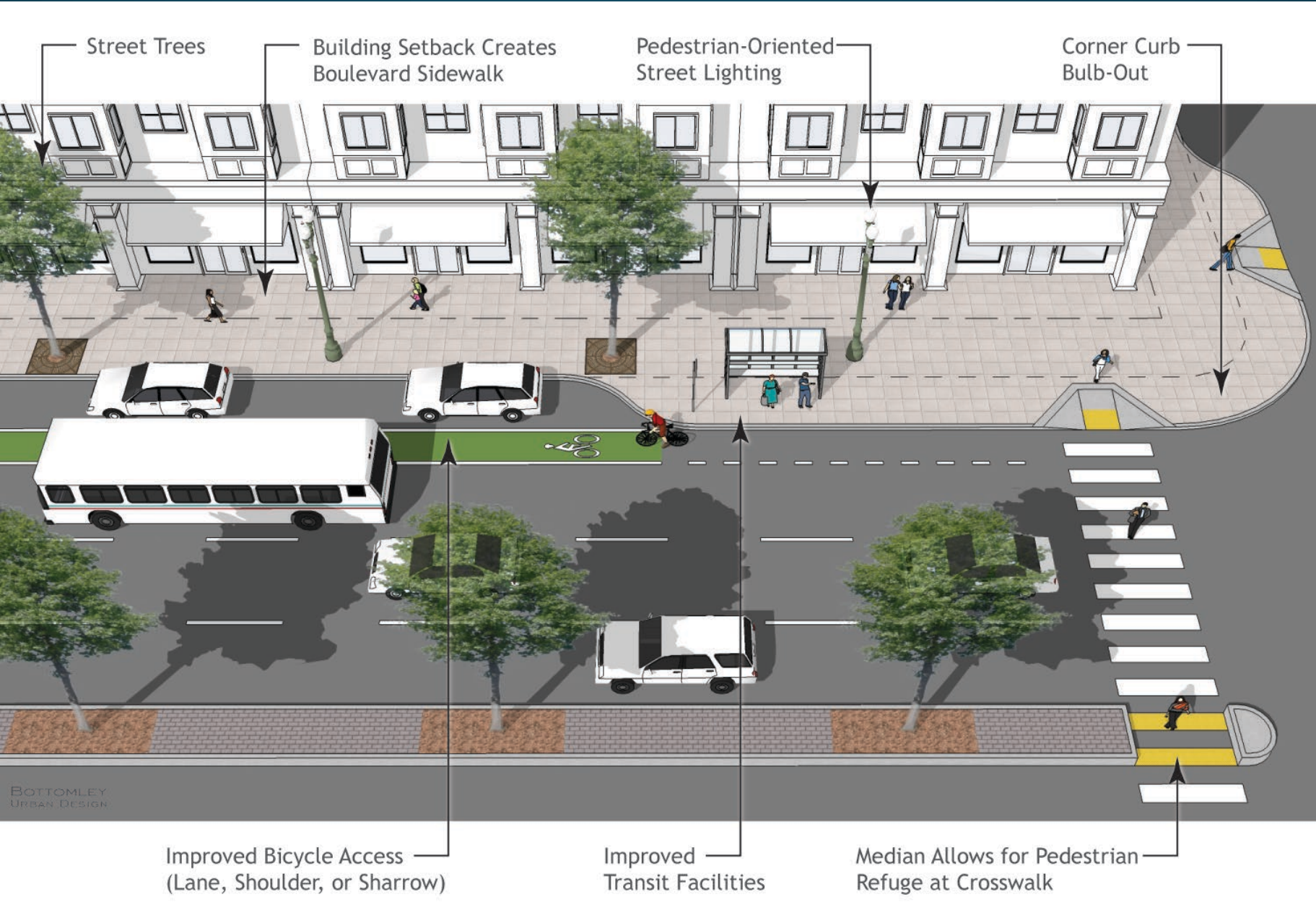




## Typical Street

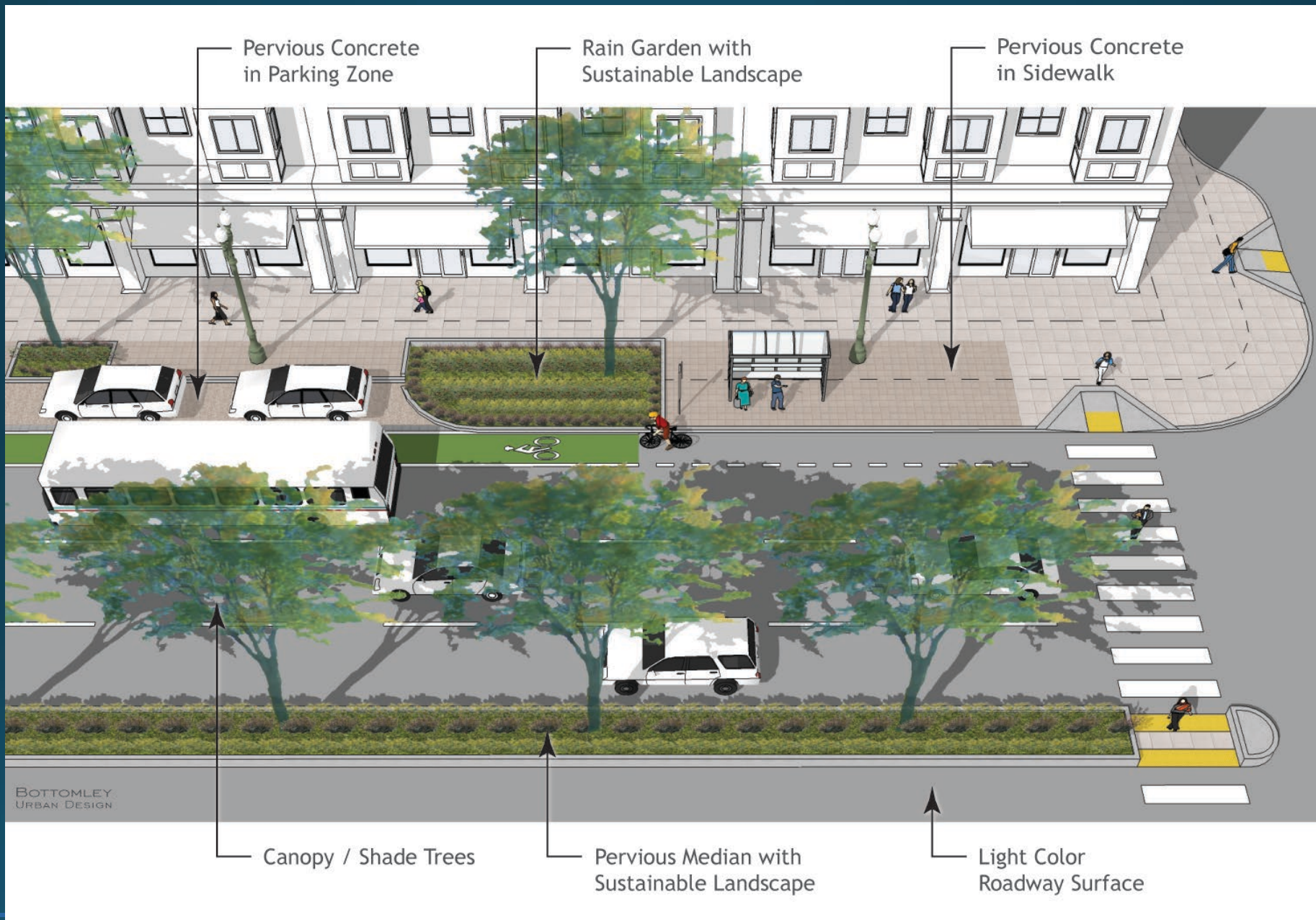


Complete Street





## Green and Complete Street





# Bioretention in Green & Complete Streets



Stormwater cycletrack  
(Emeryville)



Stormwater curb extension in Safe  
Routes to School project (San Mateo)

Credit:  
SMCWPPP



# Pervious Pavement in Roadways

## Pervious Interlocking Concrete Pavers (PICP)



Credit: City of Berkeley

## Pervious Concrete



## Pervious Pavers



Credit:  
Architecture  
& Design

## Grid Pavement





# Pervious Pavement in Green & Complete Streets



PICP Crosswalk



Pervious Paver Crosswalk



# Hacienda Avenue (Campbell)

## *Green and Complete Street Example*



### Before:

- Road 65-70 ft wide
- Pavement in need of repair
- No bike facility
- Discontinuous sidewalks

Credit: City of  
Campbell



# Hacienda Avenue (Campbell)

## *Green and Complete Street Example*

### After:

- Reconstructed pavement
- 63 biotreatment areas
- 60 street trees
- Bike lanes
- Traffic-calming bulbouts
- Continuous sidewalks

Funding: City funds,  
Prop 84 and VTA  
grants





# Oakland





# El Cerrito





# Implementation Drivers

## Stormwater-Quality Related (MRP):

- Some road projects trigger GSI requirements
- Opportunities in capital improvement projects
- GSI implementation targets

## Other Programs:

- Transportation – combining GSI less expensive
- Urban forestry
- Climate resilience/adaptation – urban **heat**
- Public health – walking/biking, air pollution
- Flood resilience/management
- Urban greening/nature



# Implementation Successes

## Successes:

- Achieving multiple benefits meets municipal goals and public expectations
- Public agencies gaining more experience with GSI construction and maintenance
- Use of urban forestry GSI measures to treat stormwater
- Use of pervious pavement in more applications to reduce maintenance costs
- Training is happening! (ReScape, The Watershed Project, Grassroots Ecology, Conservation Corps)





# Implementation Challenges

## Challenges:

- Finding opportunities for complete AND green street projects
- Utilities under roadways
- Meeting public expectations for GSI aesthetics at a reasonable cost
- Training staff and contractors on landscape maintenance aesthetics and performance
- Learning from other jurisdictions – some staff feel their jurisdiction is unique
- Adapting to a changing climate (hotter and drier) in combination with sandy GSI soil



# Construction Funding Challenges

## Grants and Transportation Funding:

- Many transportation projects have insufficient funds for GSI
- Funding can have limitations on GSI expenditures
- Regional (larger) projects are more cost-effective

## Stormwater Fees:

- California law makes it difficult to enact or raise stormwater fees – it's not classified the same way as sanitary sewer, trash or drinking water fees

## **Funding for municipal GSI projects is needed**

- Such as Measure W in the Los Angeles area





# Maintenance Funding Challenges

## Transportation Projects:

- Grant funding not typically for maintenance
- GSI maintenance can be expensive

## Landscaping:

- Landscape maintenance is costly
- GSI vegetation is often new landscaping in roadways
- More GSI equals larger maintenance burden

## Public Perception:

- The public is sometimes reluctant to pay for maintenance and wants to see new projects



# Bay Area Green Street Summary

## Significant Green Street Implementation to-date in the “MRP-Area”

- 200+ green street projects
- Integration with Complete Street projects

## Multiple environmental benefits

- Improved water quality
- Urban cooling
- Urban greening and habitat
- Better coordination with complete streets, urban forestry and climate resiliency is yielding more projects





# SF Bay Area Bioretention Resources

SCVURPPP GSI Handbook (2019 and 2025)

<https://scvurppp.org/2019/09/01/scvurppp-green-stormwater-infrastructure-handbook/>

SCVURPPP GSI Vegetation Guide (2023)

<https://scvurppp.org/2023/06/30/green-stormwater-infrastructure-vegetation-guide/>

City of San José GSI Maintenance Field Guide (2019)

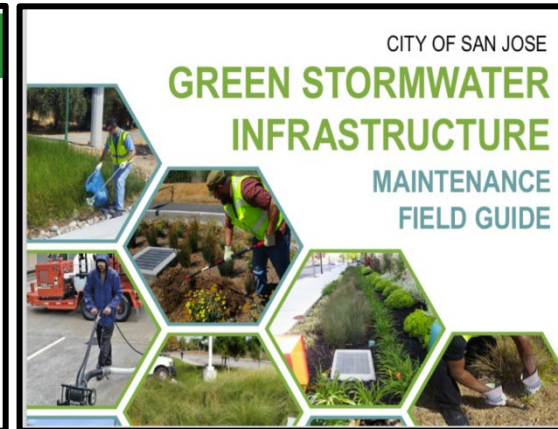
[www.sanjoseca.gov/home/showdocument?id=40709](http://www.sanjoseca.gov/home/showdocument?id=40709)

SMCWPPP GI Design Guide (2024)

[https://www.flowstobay.org/wp-content/uploads/2024/05/SMCWPPP\\_GIDG-3rd-Edition-2024\\_web.pdf](https://www.flowstobay.org/wp-content/uploads/2024/05/SMCWPPP_GIDG-3rd-Edition-2024_web.pdf)

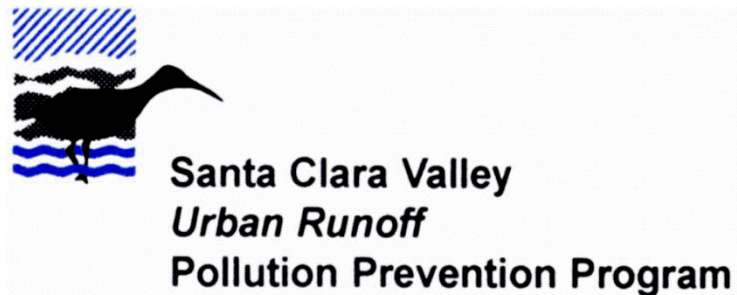
San Francisco GI Maintenance Guide Book (2018)

<https://sfpuc.sharefile.com/share/view/sb83923c24cb4298a>



# Contact Information

Peter Schultze-Allen  
CPSWQ, NGICP, RQP, LEED-AP  
Senior Technical Scientist, EOA  
[pschultze-allen@eoainc.com](mailto:pschultze-allen@eoainc.com)







# Active Transportation Program: Conservation Corps Inclusion



# Legislative Language



**SB 99 (Chapter 359, Statutes of 2013)** directs the ATP projects to include the use of the California Conservation Corps (CCC) and Certified Community Conservation Corps (Local Corps):

**Provision:** “(10) Use of California Conservation Corps or qualified community conservation corps, as defined in Section 14507.5 of the Public Resources Code, as partners to undertake or construct applicable projects in accordance with Section 1524 of Public Law 112-141.”

**Legislative Intent to Use Corps:** Engage youth participating in workforce development programs, with opportunities to participate in transportation sector career path projects.

**Per the Guidelines:** *“Points will be deducted if an applicant does not seek Corps participation or if an applicant intends not to utilize a Corps in a project where the Corps can participate.”*





# Who are the Conservation Corps of California

Conservation Corps enroll young adults 18-26 to perform important conservation projects throughout California.

Conservation Corps are rigorous programs that combine work, education, leadership, and career development.





## California Conservation Corps

- A state department within the Natural Resources Agency
- Modeled after the Civilian Conservation Corps of the 1930's
- 27 sites across the state including seven residential centers



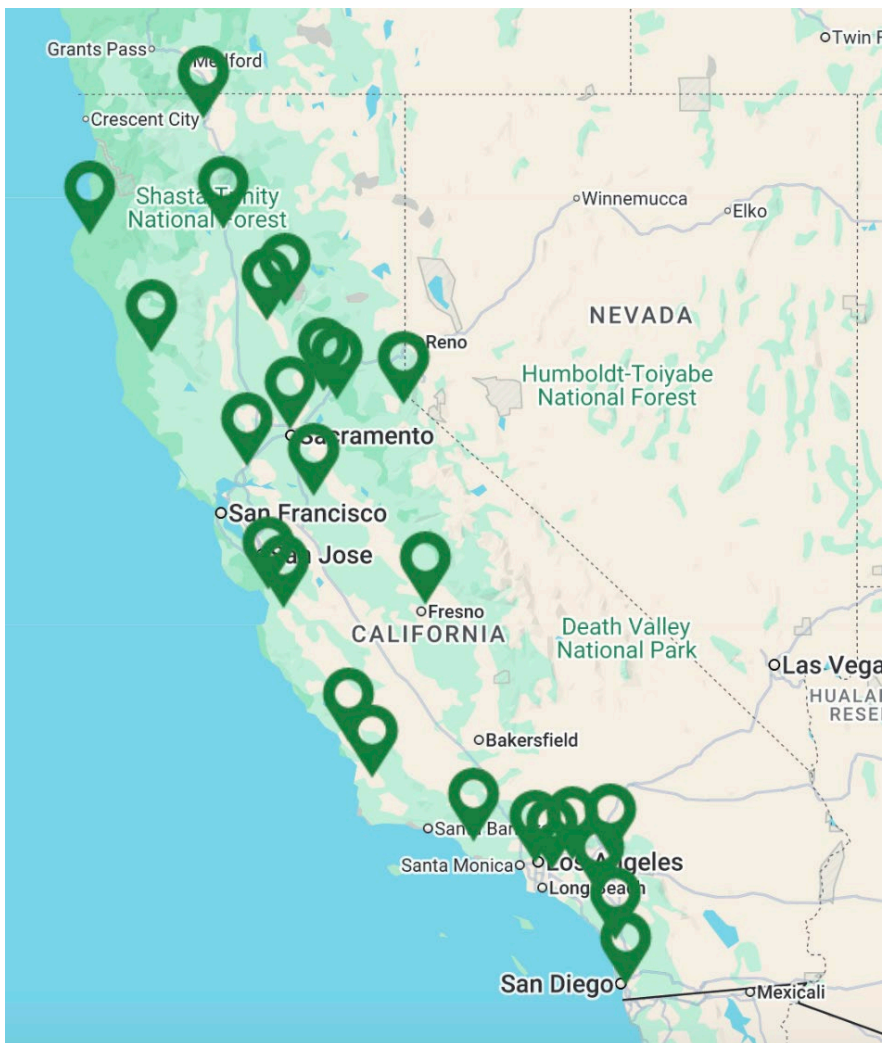
## Local Conservation Corps

- 14 state-certified independent non-profit organizations located in communities throughout California
- Enroll young adults 18-26 to perform important conservation projects
- State-certified to meet strict requirements for rigorous programs that combine work, education, leadership, and career development

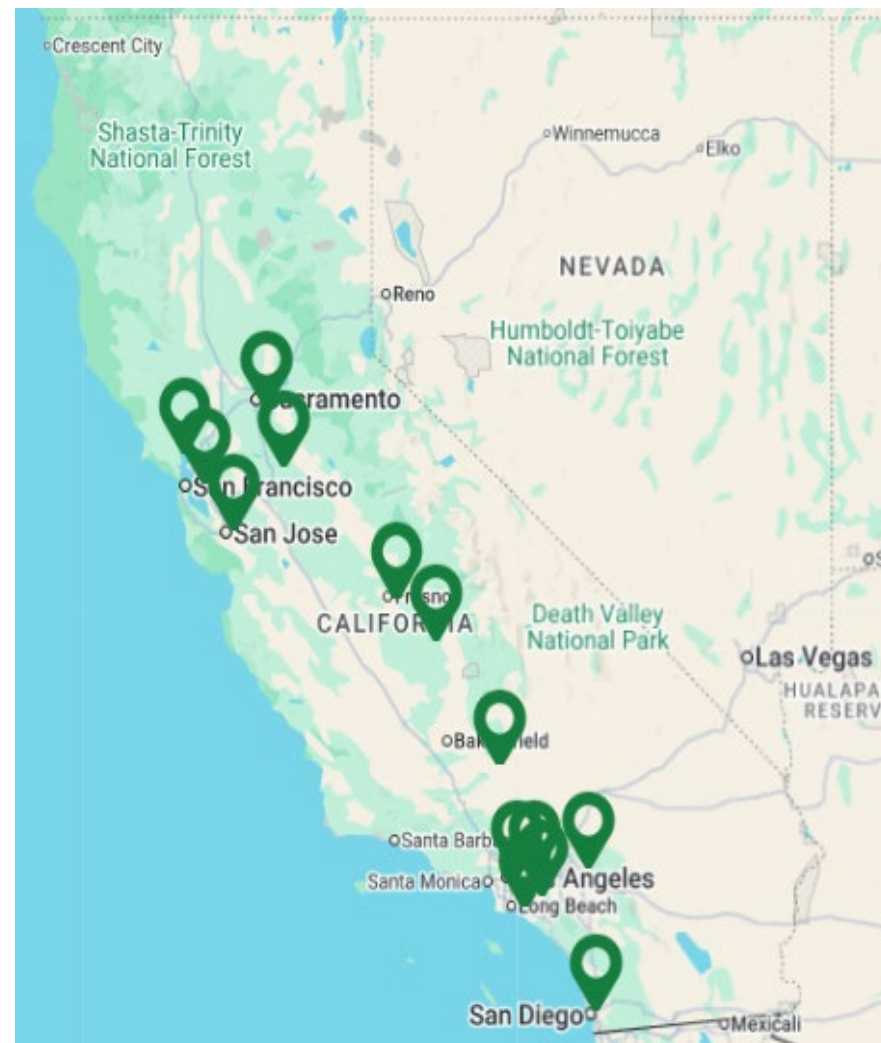




## California Conservation Corps



## Local Conservation Corps



# Project Types



## **Implementation Projects**

For implementation projects, applicants must consult with the California Conservation Corps and Certified Community Conservation Corps (hereafter collectively referred to as Corps) to determine the feasibility of the Corps' participation in the project or accept a deduction of points on the project's application score.

To avoid a point deduction and to receive preference, please submit your project details through the Corps Consultation webpage at <https://ccc.ca.gov/collaborate/consultation/>. The Corps will review your project application for feasibility within 14 business days and provide evidence of consultation that should be included in your application.



The Corps cannot guarantee a compliant review process for applicants who submit the required form and attachments fewer than 14 business days before an application deadline.

## **Planning/Non-Implementation Projects**

The process does not apply to planning projects. These include planning proposal applications or proposal applications that do not include a field component. Applicants' use of the Corps will not impact their project scores. If you are unsure if your project requires consultation, please contact the Corps at [ATP@CCC.CA.GOV](mailto:ATP@CCC.CA.GOV).





# Examples Projects

The Corps provides supervised work crews of young adults trained and equipped to work safely on a wide variety of projects. Any work that includes hand labor is feasible.

## Examples of work Corpsmembers can perform\*

- Repair, remove & replace sidewalks
- Sign installation
- Plant and tree planting
- Tree removal and tree care (includes fuel reduction)
- Maintenance (e.g., clearing trails of downed trees, debris, and vegetation; cleaning out drainage structures; and removing invasive species)
- Bike locker & bike rack installation
- Irrigation
- Drought-tolerant landscaping
- Demolition & deconstruction
- Trail construction
- Urban park construction
- Graffiti removal
- Fencing
- Outreach & Education

\*Please note that these lists are not exhaustive





# Benefits of Using the Corps

Utilizing the Corps is included in legislation to increase the public benefit of projects by creating workforce development opportunities for young adult Corpsmembers, many of whom live and work in disadvantaged communities and vulnerable populations.

- The Corps provides comprehensive job training, career development, and educational opportunities to young adults 18-26.
- Natural Resource (Transportation) projects serve as career pathways for young adults to enter specialized fields, including firefighting, forestry, energy conservation, and other environmental fields.
- Corpsmembers often work on projects in their own community, strengthening their connection to the direct benefits of the project.







# Corps Consultation Process

Applicant visits the CCC Consultation webpage & submits project details via web form

Both Corps will review the project for feasibility & notify applicants within 14 business days whether it is feasible for the Corps to participate

Applicant is provided evidence of consultation and Corps determination to include with their grant application


## Important Notes:

- The Corps do not need to be included in a **bidding** process – the ATP PRC takes precedence over competitive bidding regulations for projects funded under the division.
- The Corps are **exempt** from prevailing wages (California Labor Code section 1720.4(c)).
- Applicants are **strongly encouraged** to reach out to the Corps early in the process while developing project proposals to determine how the Corps can be included and ensure a compliant review process.
- The Corps **cannot** guarantee a compliant review process for applicants who submit the required form and attachments fewer than 14 business days before an application deadline.


# Corps Consultation Request Form

Estimated time to complete the JotForm: **15 minutes** with completed project materials to upload





CALIFORNIA CONSERVATION CORPS  
CERTIFIED COMMUNITY CONSERVATION CORPS  
CORPS CONSULTATION FORM



All fields marked with \* are required and must be filled.

CCC & LCC Corps Consultations

Applicants to certain California State Grants/Programs may receive preference by partnering with the California Conservation Corps (CCC) and Certified Community Conservation Corps (Local Conservation Corps or LCC) on their projects.

To initiate the Corps Consultation Process, complete the form below and include all required attachments.

Within 14 business days of receiving a complete submission, the Corps will review the project for feasibility, and both the CCC and California Association of Local Conservation Corps (CALCC) will send the applicant a completed Corps Consultation Review Document for inclusion with their grant application.

For general questions, please contact the CCC at [Consultations@ccc.ca.gov](mailto:Consultations@ccc.ca.gov) and the Local Corps at [Info@MyLocalCorps.org](mailto:Info@MyLocalCorps.org).

Is this application solely for planning or acquisition with no field work? \*

☐ Yes

☐ No

Project Funding Type \*

✓ Please Select

Climate Bond - Prop 4

Active Transportation Program (ATP)

Prop 68 - Parks & Water Bond 2018

Prop 1 - Water Bond 2014, Chapter 6

Department/Conservancy administering the grant program to which you are applying for funding \*

Name of Grant Program \*

Due date of Grant Application

Month Day Year

Anticipated Grant Award Date

Month Day Year

Name of Grant Applicant Organization \*

Contact for Project details \*

First Name Last Name

Contact's Organization \*

Contact's Title \*

Contact's Email \*

example@example.com

Contact's Phone Number \*

(000) 000-0000

Please enter a valid phone number.

Project Title \*

Estimated Project Start Date \*

Month Day Year

Estimated Project End Date \*

Month Day Year

Project Location (Address or General Coordinates) \*

Anticipated Corpsmember Labor Start Date

Month Day Year

Anticipated Corpsmember Labor End Date

Month Day Year

Proposed Budget for Corpsmember Labor

Optional

CCC Center you are interested in consulting with

Please Select

Optional

Local Corps you are interested in consulting with

Please Select

Optional

If applicable, identify all seasons during which Corpsmember Labor is needed

☐ Spring

☐ Summer

☐ Fall

☐ Winter

Project Description identifying key project activities, deliverables, and a clear description of fieldwork. (Attach additional information as necessary.) \*

Portions of this project that can be carried out by Corpsmembers. If unfamiliar with the full capabilities of Corpsmembers, type "Uncertain". (Attach additional information as necessary.) \*

Please attach the following documents below:

- Project Location Map(s) (required)
- Site Plan(s) (if available)
- Any other information that would be helpful for Project Managers to understand your project

Project Location Map(s) \*

Browse Files

Drag and drop files here

\*Required (Note: File size is limited to 5MB total if larger please compress your file/upload a zip file version)

Site Plan(s)

Browse Files

Drag and drop files here


Required if available (Note: File size is limited to 5MB total if larger please compress your file/upload a zip file version)

Additional Attachments as needed

Browse Files

Drag and drop files here

(Note: File size is limited to 5MB total if larger please compress your file/upload a zip file version)

 ACCESSIBILITY  
ENABLED FORM



# Scoring with the Corps



Utilizing the Corps is included in legislation to increase the public benefit of projects by creating workforce development opportunities for young adult Corpsmembers, many of whom live and work in disadvantaged communities and vulnerable populations.

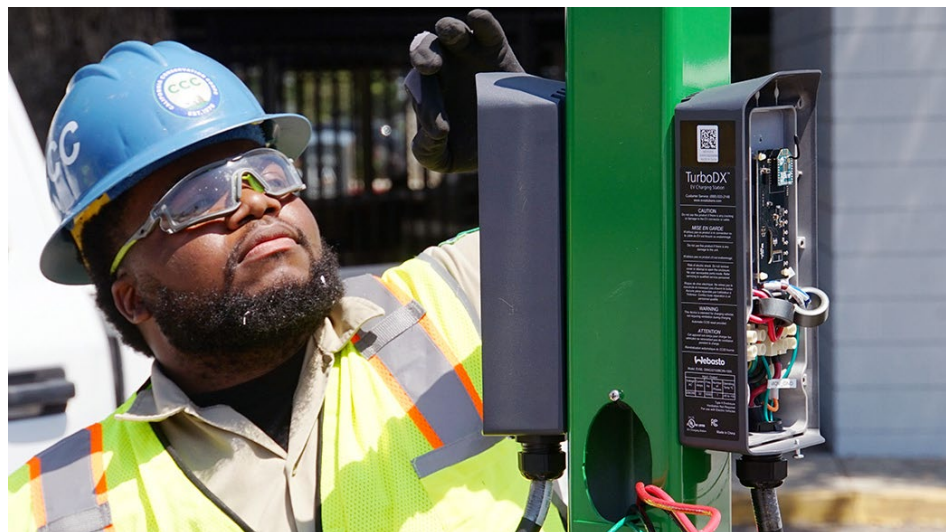
- Avoided point deduction on current project application (0 or -5 points)
- Avoided point deduction on future project applications (up to -10 points)
  - Suppose the awardee indicated on an ATP application that they intended to use a Corps but ultimately failed to use/chose not to use Corps after funding was received. In that case, the entity will receive negative points (up to minus 10 points) on the next ATP application.

NOTE: The Corps must be consulted on all other projects, including planning projects and scientific studies with field work such as, but not limited to, baseline studies, invasive plant removal, native plant propagation, mapping, and site maintenance.





# What to Do After Receiving an Award?



If your project has been deemed feasible for involvement by the Corps and has received an award, please reach out to the Corps project manager mentioned in your feasibility notice. In your communication, you'll address the following points:

- Confirm the availability of the Corps
- Discuss the details of the project work
- Schedule a call and/or project walkthrough
- Understand the contracting process

If both the CCC and LCC determine that it is feasible for corpsmembers to work on the project, it is the grantee's discretion on which Corps to hire. If there is enough project work for both Corps to complete, the grantee is welcome to hire both Corps. We are always open to collaboration.





# Access to Corps Consultation Form and Contact Info.

**California Association of Local Conservation Corps:**

[inquiry@atpcommunitycorps.org](mailto:inquiry@atpcommunitycorps.org)

**California Conservation Corps:**

[atp@ccc.ca.gov](mailto:atp@ccc.ca.gov)

**Access Corps Consultation Form:**

<https://ccc.ca.gov/collaborate/consultation/>

Grant Consultation | California Co x +

<https://ccc.ca.gov/collaborate/consultation/>

Translate Settings

Join the CCC Training Benefits Locations Staff Opportunities Collaborate About Us N

## CONNECT WITH US

### Consultation Process

To initiate the grant consultation process, read the instructions and complete the form below.

[CONSULTATION INSTRUCTIONS](#) [CORPS CONSULTATION FORM](#)

## VIEW GRANT INFORMATION

### Active Transportation Program

**Contact**  
[ATP@ccc.ca.gov](mailto:ATP@ccc.ca.gov)

Funds from California's [Active Transportation Program](#) can be used to increase biking, walking, and other active modes of transportation. ATP grant applicants receive preference by consulting with the CCC and [certified local corps](#) while developing their project proposals. To get started, fill out CCC's Grant Consultation Form and email us with any specific questions!

# ATP Guidance for Greening Projects

- 2025 Active Transportation Program Guidelines - Appendix C, page 47
- Work with CA Conservation Corps (CCC)
- Types projects CCC can assist with:
  - Irrigation
  - Landscaping
  - Tree planting
- Reach out to your Caltrans District ATP Coordinator for other types of greening installation ideas or if you have questions.



# Greening in ATP Grants

---



## **Corcoran**

ATP Cycle 6, 40 trees

---



## **Los Angeles**

ATP Cycle 6, 270 trees

---



Q & A time





# CDPH ATRC NI Technical Assistance Staff



Alicia Ramos

Districts: 1, 2, 4, 5, 6, 9, 10

[Alicia.Ramos@cdph.ca.gov](mailto:Alicia.Ramos@cdph.ca.gov)



Marianne Hernandez

Districts: 3, 7, 8, 11, 12

[Marianne.Hernandez@cdph.ca.gov](mailto:Marianne.Hernandez@cdph.ca.gov)



# Thank You

