

ON THE MOVE



 *Active Transportation Resource Center*

ATRC On the Move Presents:

SYNERGY 2021

QUARTERLY TELECONFERENCE SERIES

EQUITY

APRIL 15, 2021



ATP NI Teleconference Logistics

- You will be muted upon entry
- Mute your phone and computer
- For questions or during the discussion portion of the meeting:
 - Use the “Chat” (Please send question to All Attendees/Everyone)
 - Raise Hand and unmute both phone and computer to speak



Our Motivation

- Help California meet its long-term multi-modal transportation, sustainability, health, safety, and equity goals
- Build your awareness, confidence, and trust in the ATRC, and your understanding of ATP project requirements
- Assist you in making your ATP project as successful as possible
- Get more people safely walking and bicycling for transportation!

Hosts

Caltrans

- Summer Lopez, Assistant Coordinator, ATP NI Programs and ATRC

California Department of Public Health, Injury and Violence Prevention Branch, Active Transportation Safety Program

- Victoria Custodio, ATRC NI Technical Assistance Team
- Marianne Hernandez, ATRC NI Technical Assistance Team

Speakers

- Lazaro Cardenas- CDPH Office of Health Equity
- Kendee Vance- Caltrans District 2
- Edgar Garibay- Tuolumne River Trust
- Kiran Parmar - California Transportation Commission
- Susie Rico-Vasquez- Fresno County Department of Public Health

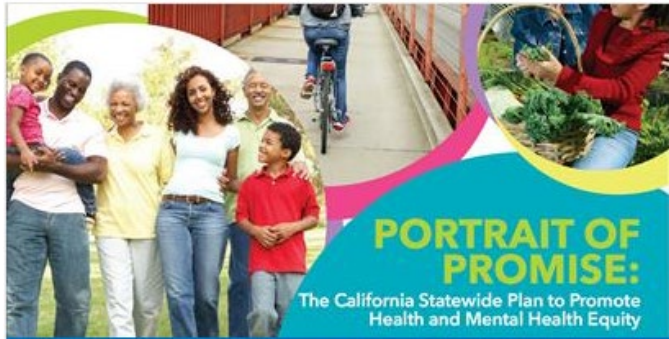
Community Engagement and Racial Equity

Lazaro Cardenas (he/him/his), Racial Equity Specialist
Office of Health Equity, California Department of Public Health

Synergy 2021: Equitable Engagement Webinar
Thursday, April 15, 2021



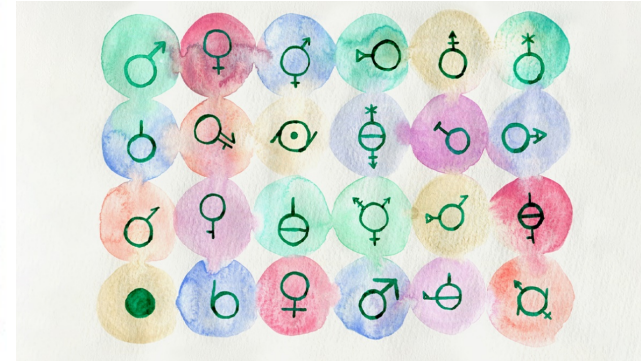
Office of Health Equity



Health Research & Statistics



Climate Change & Health Equity



Gender Health Equity



COVID-19 Health Equity Pilot Projects



Community Development & Engagement



Health in All Policies

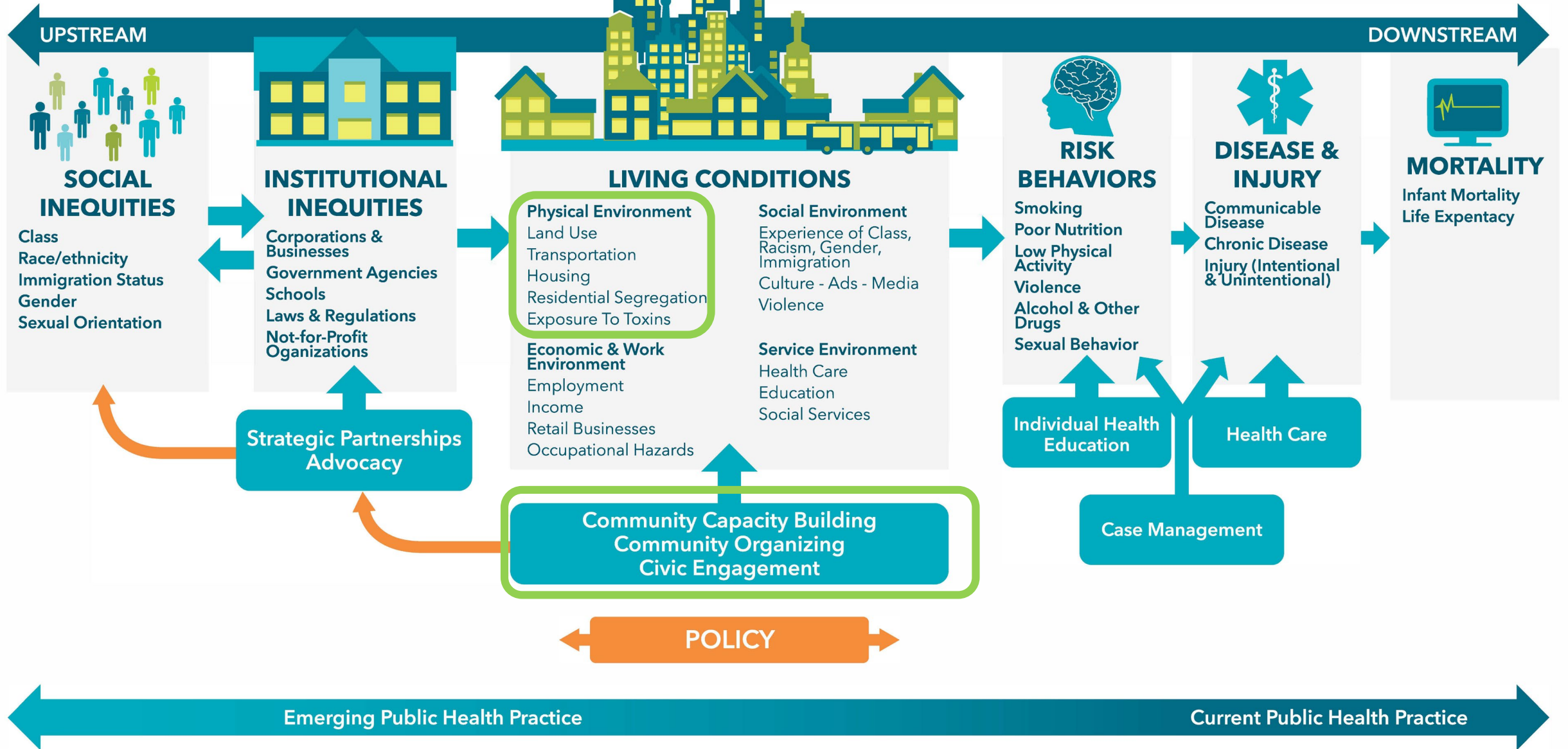


Business Operations



Advisory Committee

A PUBLIC HEALTH FRAMEWORK FOR REDUCING HEALTH INEQUITIES
BAY AREA REGIONAL HEALTH INEQUITIES INITIATIVE



White Supremacy *

A belief in the superiority of white, Euro-American cultural heritage (including history, arts, language, traditions, values, religion, etc.) over the cultural heritage and experiences of people of color.

A historically-based, institutionally-perpetuated system of exploitation and oppression of nations and peoples of color by white people for the purpose of maintaining and defending a system of wealth, power, and privilege

White Supremacy Culture *

Perfectionism
Sense of Urgency
Defensiveness
Quantity Over Quality
Worship of the Written
Word
Either/Or Thinking

Power Hoarding
Fear of Open Conflict
Individualism
Progress is Bigger/ More
Objectivity
Right to Comfort
Paternalism

White Supremacy Culture: Paternalism *

- Decision-making is clear to those with power and unclear to those without it
- Those with power think they are capable of making decisions for and in the interests of those without power
- Those with power often don't think it is important or necessary to understand the viewpoint or experience of those for whom they are making decisions
- Those without power understand they do not have it and understand who does
- Those without power do not really know how decisions get made and who makes what decisions, and yet they are completely familiar with the impact of those decisions on them

Paternalism: Antidotes *

- Make sure that everyone knows and understands who makes what decisions in the organization;
- Make sure everyone knows and understands their level of responsibility and authority in the organization;
- Include people who are affected by decisions in the decision-making

Avoid DAD

“Decide, announce, defend”

- Participate in dialogue, but **do not alter** any decisions
- Communities seen as **check -box** or **obstacle**



Purpose of Spectrum

- Acknowledge marginalization
- Assert a clear vision
- Articulate a developmental process
- Assess community participation efforts

Rosa González, Facilitating Power in partnership with Movement Strategy Center © 2019

<https://movementstrategy.org/directory/spectrum/>

Spectrum of Community Engagement to Ownership

(modified version: Rosa González, Facilitating Power in partnership with Movement Strategy Center © 2019)

Stance Towards Community	Ignore	Inform	Consult	Involve	Collaborate	Defer to
Message to Community	“Your voice, needs, and interest do not matter”	“We will keep you informed”	“We care what you think”	“You are making us think, and therefore act, differently about the issue”	“Your leadership and expertise are critical to how we address the issue”	“It’s time to unlock collective power and capacity for transformative solutions”.
Activities	Closed door meetings; Misinformation; Systemic disenfranchisement;	Fact sheets; Open houses; Presentations; Bill boards; Videos	Public comment; Focus groups; Community forums; surveys	Community organizing and advocacy; House meetings; Interactive workshops; Polling; Community forums	MOU’s with CBOs Community Organizing; Resident Advisory Committees; Open planning forums with resident polling	Community-Driven Planning; Consensus building; Participatory Action Research; Participatory budgeting; cooperatives
Resource allocation ratios	100% systems admin	70-90% to systems admin; 10-30% to promotions and publicity	60-80% systems admin; 20-40% consultation services	50-60% systems admin; 40-50% community involvement	20-50% systems admin 50-70% to community partners	80-100% to community partners, community driven processes

Spectrum of Community Engagement to Ownership

(modified version: Rosa González, Facilitating Power in partnership with Movement Strategy Center © 2019)

Stance Towards Community	Ignore	Inform	Consult	Involve	Collaborate	Defer to
Message to Community	"Your voice, needs, and interest do not matter"	"We will keep you informed"	"We care what you think"	"You are making us think, and therefore act, differently about the issue"	"Your leadership and expertise are critical to how we address the issue"	"It's time to unlock collective power and capacity for transformative solutions".
Activities	Closed door meetings; Misinformation; Systemic disenfranchisement;	Fact sheets; Open houses; Presentations; Bill boards; Videos	Public comment; Focus groups; Community forums; surveys	Community organizing and advocacy; House meetings; Interactive workshops; Polling; Community forums	MOU's with CBOs Community Organizing; Resident Advisory Committees; Open planning forums with resident polling	Community-Driven Planning; Consensus building; Participatory Action Research; Participatory budgeting; cooperatives
Resource allocation ratios	100% systems admin	70-90% to systems admin; 10-30% to promotions and publicity	60-80% systems admin; 20-40% consultation services	50-60% systems admin; 40-50% community involvement	20-50% systems admin 50-70% to community partners	80-100% to community partners, community driven processes

Spectrum of Community Engagement to Ownership

(modified version: Rosa González, Facilitating Power in partnership with Movement Strategy Center © 2019)

Stance Towards Community	Ignore
Message to Community	“Your voice, needs, and interest do not matter”
Activities	Closed door meetings; Misinformation; Systemic disenfranchisement;
Resource allocation ratios	100% systems admin

Spectrum of Community Engagement to Ownership

(modified version: Rosa González, Facilitating Power in partnership with Movement Strategy Center © 2019)

Stance Towards Community	Consult
Message to Community	“We care what you think”
Activities	Public comment; Focus groups; Community forums; surveys
Resource allocation ratios	60-80% systems admin; 20-40% consultation services

Spectrum of Community Engagement to Ownership

(modified version: Rosa González, Facilitating Power in partnership with Movement Strategy Center © 2019)

Stance Towards Community	Collaborate
Message to Community	“Your leadership and expertise are critical to how we address the issue”
Activities	MOU’s with CBOs Community Organizing; Resident Advisory Committees; Open planning forums with resident polling
Resource allocation ratios	20-50% systems admin 50-70% to community partners

Spectrum of Community Engagement to Ownership

(modified version: Rosa González, Facilitating Power in partnership with Movement Strategy Center © 2019)

Stance Towards Community	Ignore	Inform	Consult	Involve	Collaborate	Defer to
Message to Community	“Your voice, needs, and interest do not matter”	“We will keep you informed”	“We care what you think”	“You are making us think, and therefore act, differently about the issue”	“Your leadership and expertise are critical to how we address the issue”	“It’s time to unlock collective power and capacity for transformative solutions”.
Activities	Closed door meetings; Misinformation; Systemic disenfranchisement; Voter suppression	Fact sheets; Open houses; Presentations; Bill boards; Videos	Public comment; Focus groups; Community forums; surveys	Community organizing and advocacy; House meetings; Interactive workshops; Polling; Community forums	MOU’s with CBOs Community Organizing; Resident Advisory Committees; Open planning forums with resident polling	Community-Driven Planning; Consensus building; Participatory Action Research; Participatory budgeting; cooperatives
Resource allocation ratios	100% systems admin	70-90% to systems admin; 10-30% to promotions and publicity	60-80% systems admin; 20-40% consultation services	50-60% systems admin; 40-50% community involvement	20-50% systems admin 50-70% to community partners	80-100% to community partners, community driven processes

Pathways for Community Engagement

Examples:

- Permitting activities and decisions,
- Grants and contracts,
- Community Ambassadors
- Technical assistance,
- Leases,
- Rulemaking packages,
- Formal hearings,
- Community Science

*Compensation for
community time and
expertise.*

The Three Takeaways

Community engagement is necessary to advance racial equity

Community Engagement is a spectrum and aims to empower

Community engagement can be applied to a variety of activities

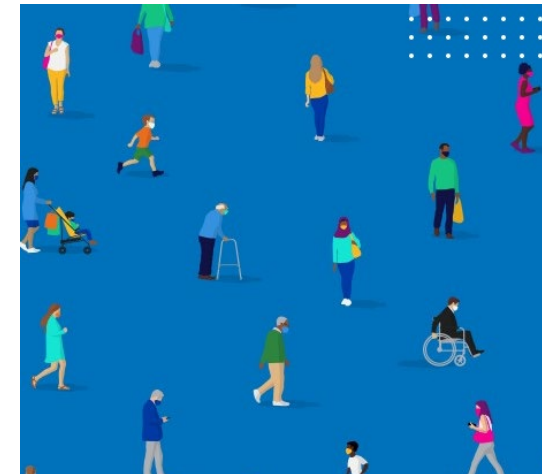
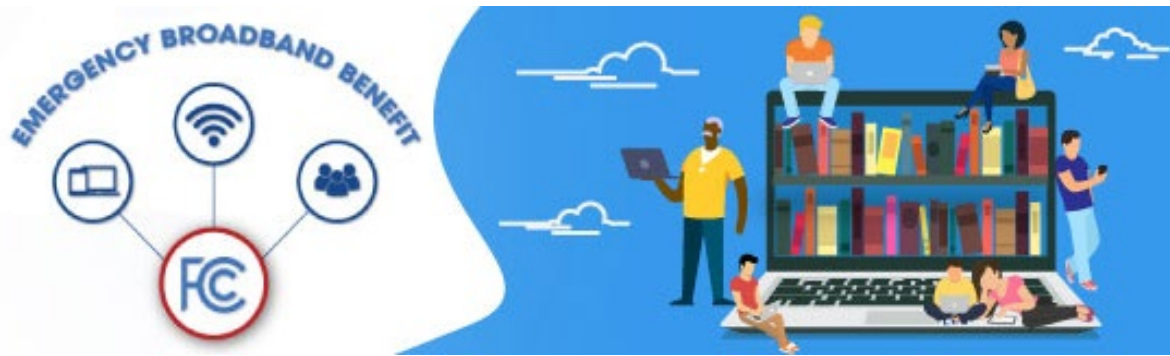
Relevant Resources

Emergency Broadband Benefit:
Helping Households Connect
During the Pandemic

<https://www.fcc.gov/broadbandbenefit>

COVID-19 Health Equity Playbook
for Communities

<https://www.cdph.ca.gov/Programs/CID/DCDC/Pages/COVID-19/COVID-19-Equity-Technical-Assistance-Playbook.aspx>



Thank you

“We don’t need perfect political systems; we need perfect participation.”
– Cesar Chavez

“If you have come here to help me, you are wasting your time. But if you have come because your liberation is bound up with mine, then let us work together.”
-Lilla Watson

Contact: Lazaro.Cardenas@cdph.ca.gov
(he/him/his)

Working With Tribal Governments

Equitable Engagement

Active Transportation Resource Center
California Dept Public Health

Kendee Vance
Caltrans, District 2
Native American Liaison

Establish Meaningful Relationships

- Learning which tribes are in your area is crucial.
- Dig in, explore their history and read about their constitutions and culture, language and how they do business.
- Reach out and begin to establish relationships. If you don't know something, ask questions. Show Respect.
- Utilize your resources to make those connections.
- Follow through and be patient but persistent.

MPO's/RTPA's



Identify Barriers to Equitable Engagement

- Access to Programs and Funding Opportunities
- Understanding the importance of Tribal Sovereignty (Inherent)
- Where can Partnerships provide pathways to project implementation
- When Barriers are identified, what are the solutions?

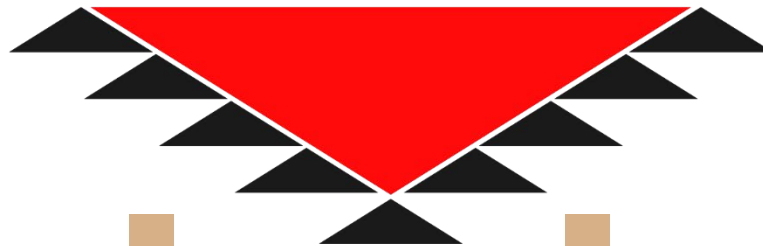
Identify Needs of their Community

- Are there unmet needs in these Tribal Communities related to complete streets?
- Have they historically been unprioritized?
- Are you providing a seat at the table for our Tribes to be heard?
- Recognize that projects and their potential impacts are linked to land use, economic goals, environmental issues, and cultural concerns
- Get these unmet needs identified and documented in every plan possible.



Happy Camp

**COMPLETE STREETS
HIGHWAY 96**



Happy Camp Complete Streets Project (HCCSP)

- Technical Advisory Committee for the HCCSP consists of:
- Karuk Tribe Department of Transportation (and consultant)
- Karuk Tribe Department of Health
- Caltrans District 2 Staff (Planning, Engineering, Maintenance, Traffic)
- Siskiyou County Regional Transportation Agency
- Siskiyou County Public Works Department
- Siskiyou County Department of Public Health
- Transportation Safety Assessment of Happy Camp performed by UC Berkeley Tech Transfer (T2SA)
- 2020 Karuk Tribal Transportation Program Long Range Transportation Plan

Happy Camp Complete Streets Project Identified in 7 Plans

1. Karuk Tribe Long Range Transportation Plan
2. Middle Klamath River Community Transportation Plan
(funded from a Caltrans Environmental Justice Community
Based Transportation Planning Grant).
3. Karuk Tribe's Safety Plan
4. Siskiyou County Regional Transportation Plan
5. Caltrans' District 2 System Management Plan
6. Caltrans' SR 96 Transportation Concept Report
7. Tribal Transportation Safety Assessment for Happy Camp



Thank you!

Kendee Vance
Caltrans, District 2
Native American Liaison
kendee.vance@dot.ca.gov
530.225.3574 or 530.768.4200

APRIL 2021 EQUITY WEBINAR: REACHING LOCAL COMMUNITIES

EDGAR GARIBAY
CENTRAL VALLEY PROGRAM DIRECTOR

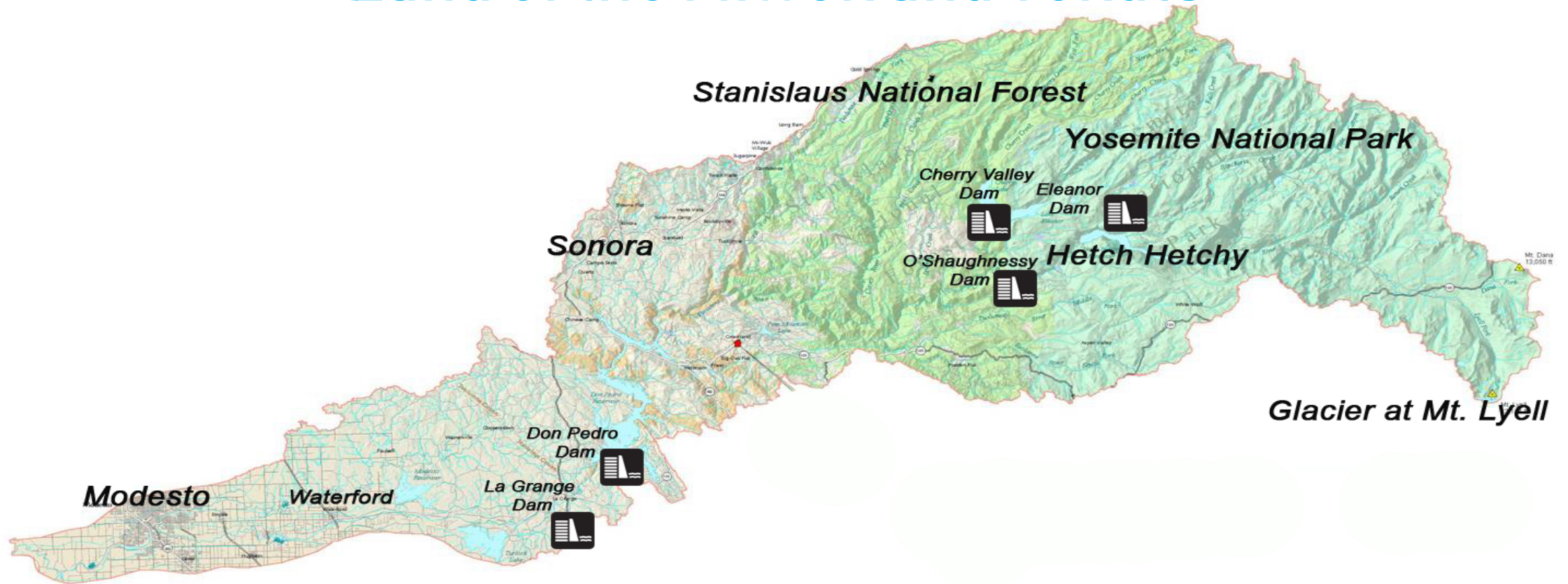


Equity Webinar Agenda

Modesto Riverside Communities

- **The Tuolumne River and Our Role in Riverside Communities**
- **Riverside Communities in Modesto**
- **Modesto's Airport Neighborhood**
- **Challenges and Successes**
- **Community Efforts During the Pandemic**

Tuolumne River Watershed Land of the Miwok and Yokuts



From Mountains to Sea... Beginning in Yosemite National Park, the Tuolumne River flows 162 miles through the Sierra Nevada Mountains and the Central Valley before joining the San Joaquin River and flowing into the San Francisco Bay.

Riverside Communities in Modesto



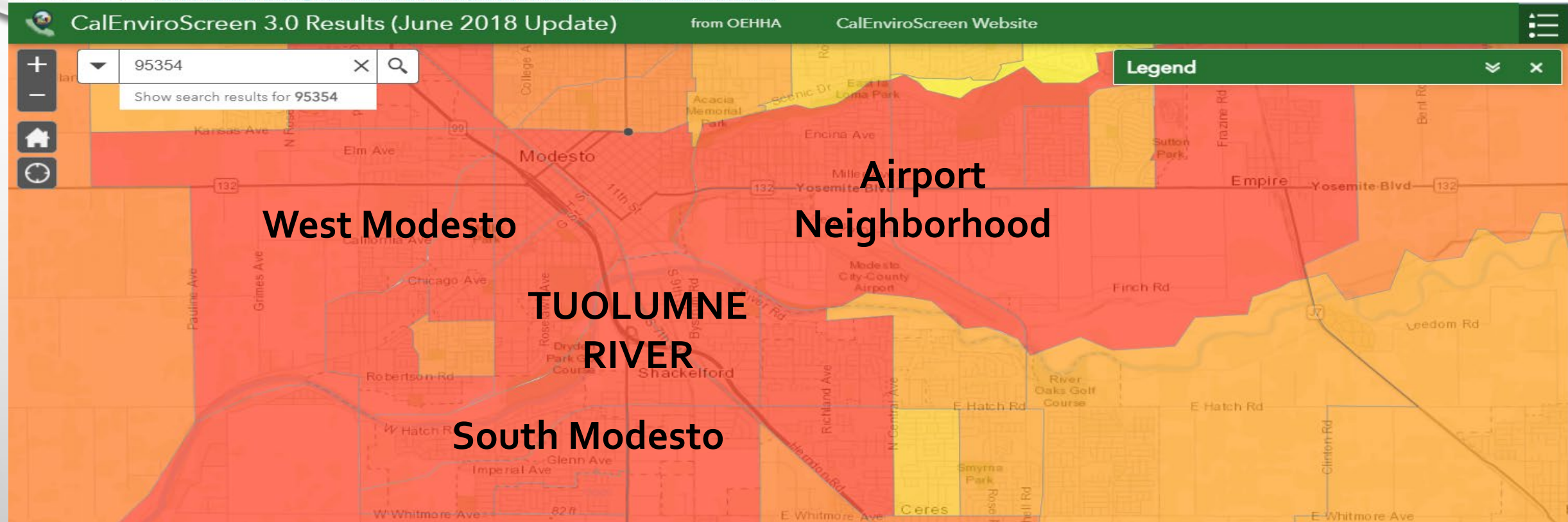
Source: Tuolumne River Regional Park Master Plan

Data from CalEnviroScreen

Census Tract Data: 70.8 % Hispanic/Latinx, 18.7% White, 2.9 % African American, 5.4 % Asian American, 5.4%, 2.0 % Other & 0.2 % Native American.

Riverside Communities in Modesto

Note: The map of SB535 disadvantaged communities (updated June 2018) can be found [here](#).



Data from CalEnviroScreen

Population Estimate: 41,823

Census Tracts: 6 within 95-100th percentile, 3 within 85 – 95th percentile

Modesto's Airport Neighborhood Challenges and Successes

Challenges

- Split Jurisdiction & State Highway (Land use, public services, etc.)
- Housing affordability
- Safety and access to community spaces
- Illegal dumping / Homelessness
- Stray animals

Successes and Opportunities

- Active participation from community leaders in school and community projects
 - Safe Routes to School & Parks
 - Walking School Bus / Crossing Guards
- Infrastructure improvements in the community and parks
 - Sewer
 - Sidewalks, walking paths and stop signs
 - Amenities in neighborhood & river parks
- Addressing EJ issues – Advocacy in public spaces
 - Regional & local planning processes (i.e. General Plan).

Modesto's Airport Neighborhood



Railroad

State Highway 132 - East

Industrial

Stanislaus County

County Parks - Mono & Oregon

County Airport / Industrial

City of Modesto

Tuolumne River

Tuolumne River Regional Park

Outreach Strategies in Riverside Communities

Key Strategies

- Challenges Staff or Org. new to the community – work with est. institutions, orgs./ leaders
- Develop trusting & authentic relationships with key orgs. & community leaders
- Create safe spaces for leaders in the community to discuss school & neighborhood priorities
- Contribute / support community driven initiatives, although it might not be in your organizations mission or expertise

Community Partners Support

- Community work requires authentic partnerships that is beneficial to the communities and partners (symbiotic)
- Do not work in silos and discover ways to include partners in the process
- Partner to facilitate leadership, civic engagement and other trainings with support of community partners and local government

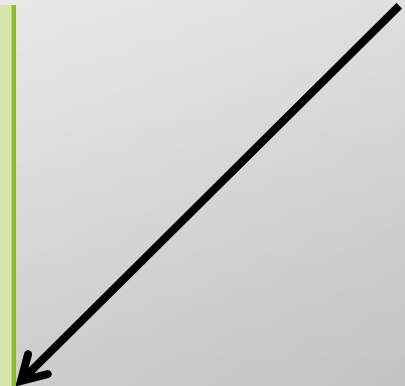
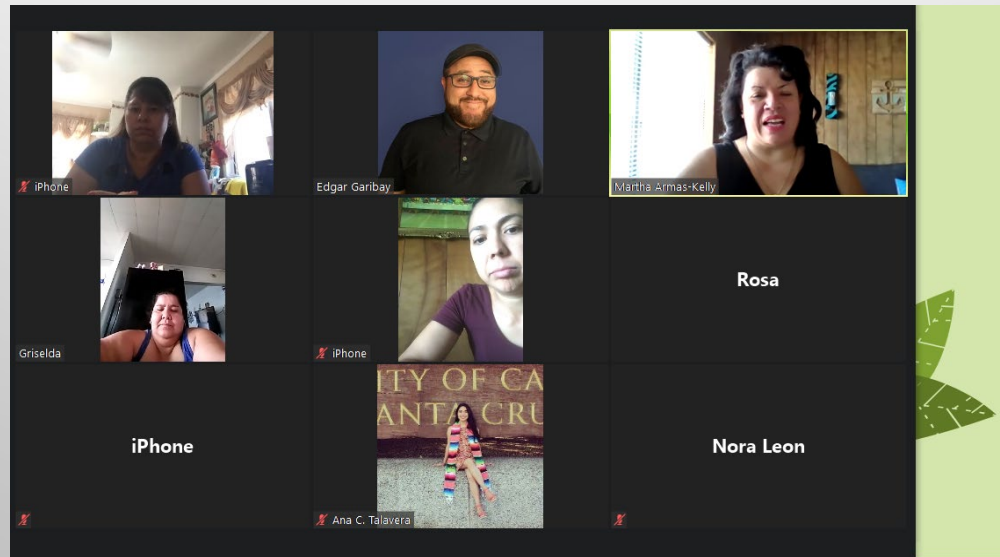
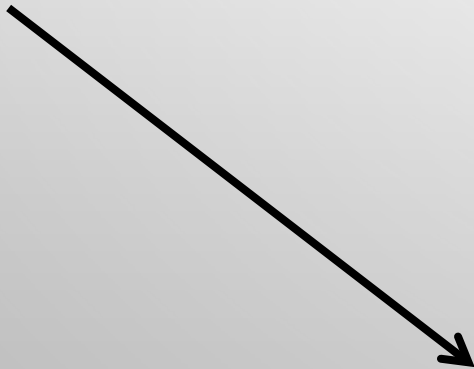
Integrating Equity in the Safe Routes to Parks Process

Safe Routes to Parks Committee:

- 10 Community Leaders
- Airport Neighborhood Collaborative (ANC)
- Tuolumne River Trust
- Catholic Charities Diocese of Stockton Environmental Justice Program
- Tuolumne River Trust Orville Wright Elementary School Healthy Start
- City of Modesto Parks Department



Transitioning to Virtual Community Capacity Building



Transitioning to Virtual Community Capacity Building

Developed Community:

- Are community members able to participate?
- Do they have access to an electronic device and reliable internet
- Understand the community members knowledge of online tools, applications and video conference

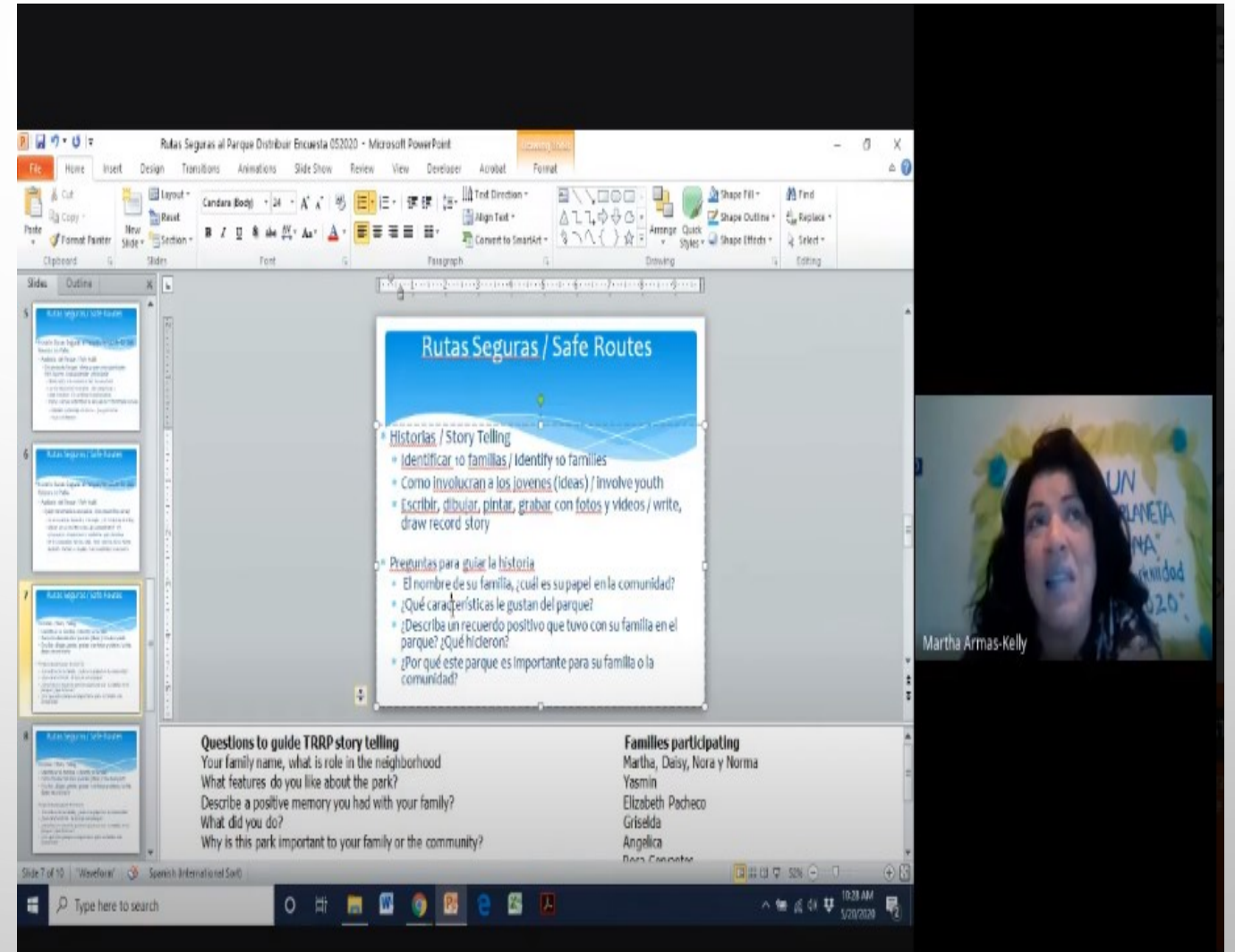
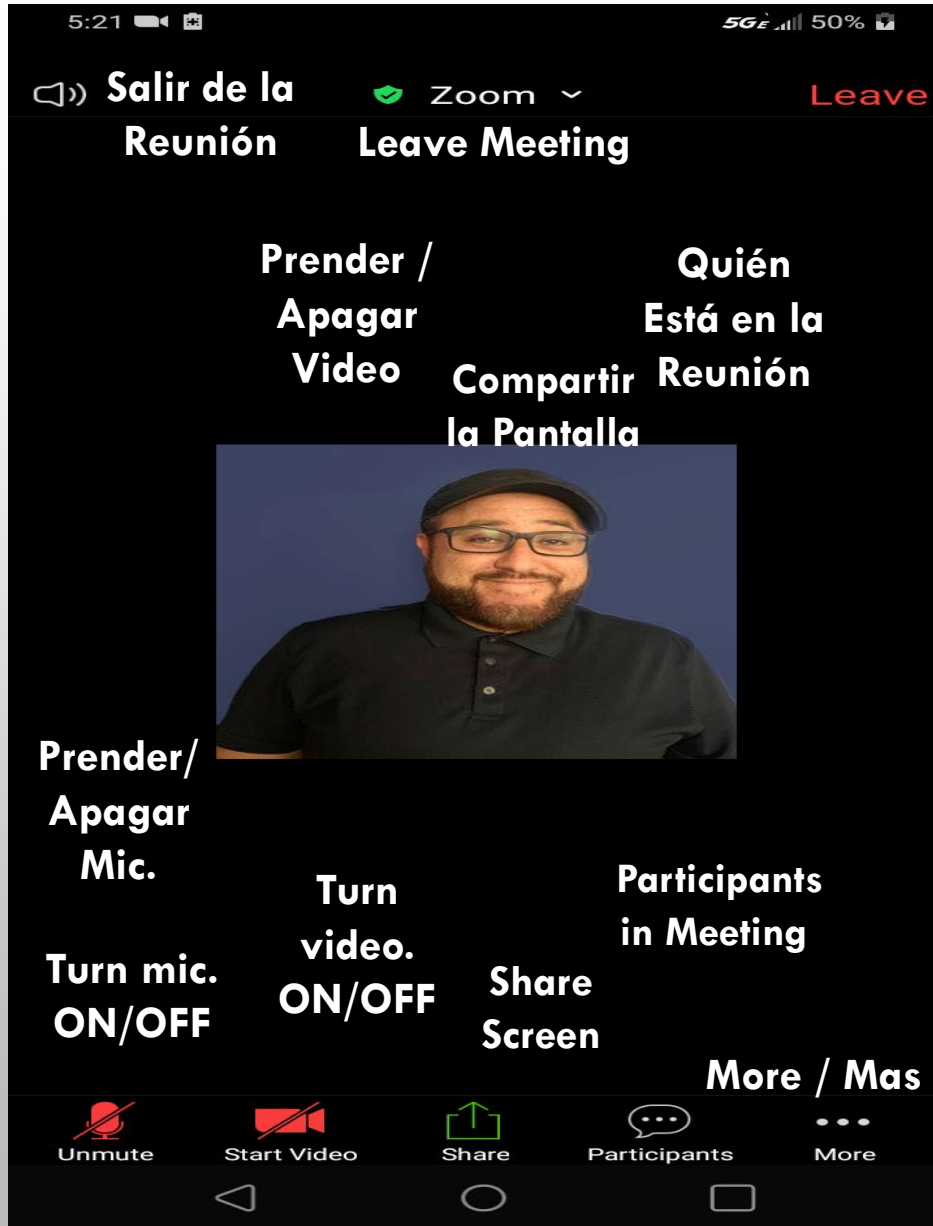
Survey Results:

- Outreached to 40 active community leaders
- 10 community leaders participated in the survey
- We found that:
 - 5 leaders owned a tablet or computer,
 - 2 leaders had some knowledge of using applications and internet tools.

Transitioning to Virtual Community Capacity Building

- Over a three month period, the committee met with resident leaders twice a week. There after we are meeting twice a month.
- Preferred electronic device: Cell Phone
- Community members learned:
 - How to use online tools & applications
 - Write an email
 - Use a search engine
 - Basics on Cell Phone use & connecting to video conference
 - How to make flyers for activities and events, and
 - How to use Google Programs (Documents, Sheets, Slides, Forms & Maps)

Virtual Community Meetings



Virtual Airport Neighborhood Safe Routes to the Tuolumne River Regional Park Action Plan

SAFE ROUTES TO THE
TUOLUMNE RIVER
REGIONAL PARK

SAFE
ROUTES TO
PARKS
ACTIVATING
COMMUNITIES

Source: Modesto Airport Neighborhood Safe Routes to School Action Plan, 2018

Tuolumne River Trust
MODesto
ANC
Airport Neighborhood Collaborative
Catholic Charities
Diocese of Stockton
Healthy
Start

- **GOAL 1:** Improve safety and increase access to the park for the community and the public.
- **GOAL 2:** Have more activities in the park as a community and seek grant opportunities to establish ongoing activities and/or recreation program in partnership with key stakeholders.
- **GOAL 3:** Improve the infrastructure in and around the park (roads, trails, etc.)



TRRP PLAN: Improving Safe Routes to the TRRP Park



Source: California Walks & UC Berkeley SafeTREC, 2016

SAFE ROUTES: TUOLUMNE RIVER REGIONAL PARK

Safe Routes to the TRRP Park Challenges Along the Way

- **Balancing Act:** Distance learning and participating in this program
- Participation from community members has decreased due to personal reasons (i.e. working schedule, knowledge of online tools and applications, etc.).
- Participation from community stakeholders decreased due to reassignments and budget costs (i.e. public agencies)
- New elected officials for Modesto City Council and Stanislaus County Board of Supervisors

QUESTIONS PLEASE REACH OUT



EDGAR GARIBAY
CENTRAL VALLEY PROGRAMS DIRECTOR
TUOLUMNE RIVER TRUST
(209) 236-0330
EDGAR@TUOLUMNE.ORG

CALIFORNIA TRANSPORTATION COMMISSION



Equity Advisory Roundtable | April 15, 2021

Kiran Parmar,
Associate Transportation Planner
California Transportation Commission

CTC Equity Updates

- [Racial Equity Statement](https://catc.ca.gov/about/racial-equity-statement) -
<https://catc.ca.gov/about/racial-equity-statement>
 - Published on January 27, 2021
- New position: Equity & Public Engagement
 - Staff to be announced soon
- Equity Advisory Roundtable (Roundtable)
 - Purpose
 - Scope
 - Membership
 - Meeting Schedule

Roundtable: Purpose & Scope

- Purpose: to elevate diverse perspectives in the transportation process and enhance relationships with local, non-profit, and advocacy partners.
- Scope: Roundtable will advise on topics including:
 - Public engagement best practices to inform the Commission's public meetings and program and planning guidelines;
 - The forthcoming Community Listening Sessions that the Commission will hold in partnership with Caltrans and the California State Transportation Agency; and
 - The development of an Equity Advisory Committee.

Roundtable: Membership

- Membership:
 - Racial/Social Equity;
 - Environmental Justice;
 - Rural Communities Issues;
 - Housing, Affordable Housing, Homelessness;
 - Native American Tribal Government;
 - Disability Rights, Social Services;
 - Environment (e.g. Air Quality, Water Quality, Climate Change);
 - Business, Economic Development, Workforce Development;
 - Youth;
 - Academia; and
 - Other.

Equity Advisory Roundtable Con't:

Roundtable Public Meeting Schedule:

Meeting	Date	Time
Meeting #1	Wednesday, April 21, 2021	1 PM – 4 PM
Meeting #2	Wednesday, May 26, 2021	1 PM – 4 PM
Meeting #3	Wednesday July 21, 2021	9 AM – 12 PM
Meeting #4	Thursday, Oct. 28, 2021	9 AM – 12 PM

<https://catc.ca.gov/meetings-events/workshops>

Thank you

Kiran Parmar

Kiranjit.parmar@catc.ca.gov

(916) 653 - 5750

Active Transportation Resource Center
On the Move: Synergy 2021
Equitable Engagement
April 15, 2021

Susie A. Rico-Vasquez, MPH
State Physical Activity Nutrition Program
Effective Engagement

Fresno County Department of Public Health
1221 Fulton Street, 3rd floor, Fresno, CA 93721
(559) 600-6407
sricovasquez@fresnocountyca.gov

The County of Fresno is an Equal Employment Opportunity Employer



Funding

The Centers for Disease Control and Prevention State Physical Activity and Nutrition Program (SPAN) funds 16 state and local recipients across the country to strengthen state and local efforts that support healthy nutrition, physical activity, and breastfeeding.

CalFresh Healthy Living (SNAP-Ed) supports healthy, active and nourished lifestyles by teaching Californians about good nutrition and how to stretch their food dollars, while also building partnerships in communities to make the healthy choice the easy choice.





Building Allies & Momentum



Know Residents



Know The Youth

California Walks | UC Berkeley SafeTREC

Walking and Biking Safety Training

Taller para la Seguridad
Peatonal y Ciclista

Fowler, California

June 30, 2020

3:00 p.m. – 5:00 p.m.



Planning Committee

Susie Rico- Vasquez
Fresno County Department of
Public Health

Danielle Claybon
Public Health Advocates

Lourdez Perez
Public Health Advocates

Dawn Marple
City of Fowler Planning
Department

Yvonne Hernandez
City of Fowler Recreation
Department

Jamaica Gentry
District 6 Caltrans

Monique Narciso
Fresno Housing Authority

Laura Gromis
Transformative Climate
Communities Bicycle
Outreach

Gloria Regier
Fowler Unified School
District

Kristina Pasma
Valley Children's
Healthcare, Safe Kids
Central California

Rudy Alcaraz
Fowler Police Department

Dario Dominguez
City of Fowler Public
Works Department

Cyndi Dean
Fresno County School
District



Thank you!

Susie A. Rico-Vasquez, MPH
State Physical Activity Nutrition Program

Fresno County Department of Public Health
1221 Fulton Street, 3rd floor, Fresno, CA 93721
(559) 600-6407
sricovasquez@fresnocountyca.gov

The County of Fresno is an Equal Employment Opportunity Employer



Please Complete a 3-minute Survey after Webinar

- You will receive a survey after the webinar is complete
- This pop up announcement will appear. Press Continue:



External Site

The host or presenter would like Webex Meetings to open a website on your computer. Cisco is not responsible for the content or availability of external sites. We recommend that you make sure this website content is from a trusted source. If you view this page or go to this site, you will be subject to the privacy policy and terms and conditions of the destination site.

Destination site: <https://survey.alchemer.com/s3/6178782/Synergy-2021-Feb-4-2021>

Continue

ON THE MOVE



 *Active Transportation Resource Center*

ATRC On the Move Presents:

SYNERGY 2021

QUARTERLY TELECONFERENCE SERIES

Thank You!

